



FOR ILLUSTRATION PURPOSES ONLY

**Riverton 20**  
Monsanto Facade



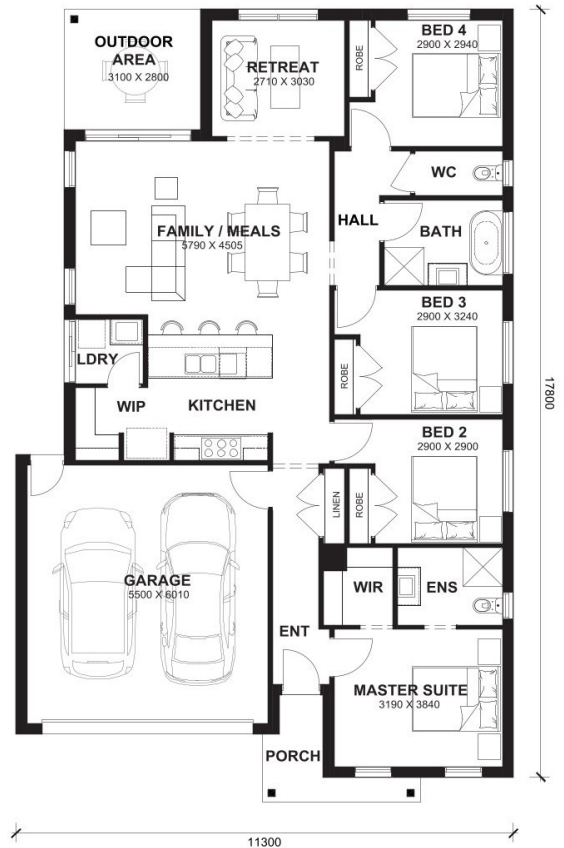
**\$676,414**

Lot 391 Belvedere Circuit  
Donnybrook (Matilda Estate)

**Lot Size:** 392m<sup>2</sup>      **House Size:** 20.06sq  
**Lot Price:** \$385,000      **House Price:** \$291,414

**PACKAGE INCLUSIONS :**

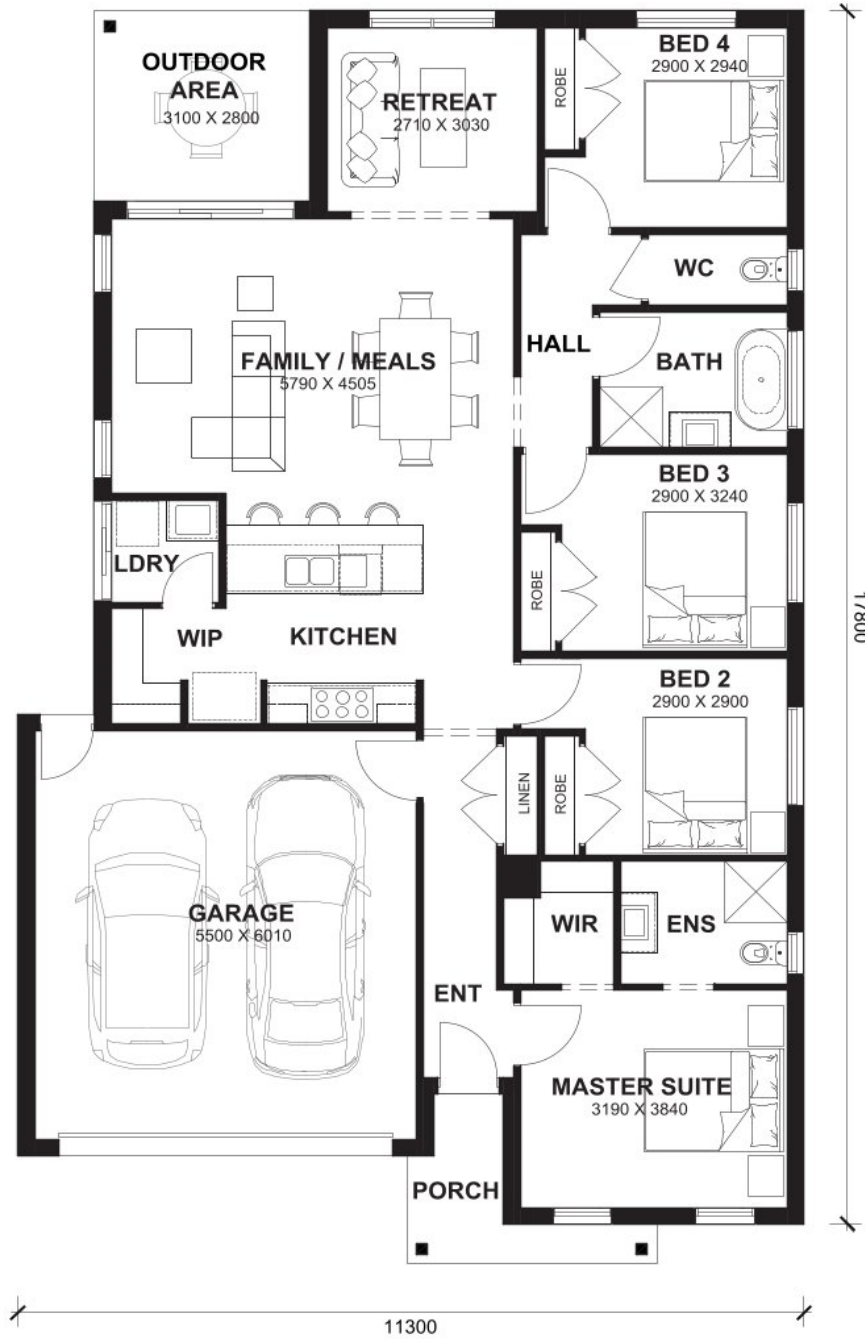
- Double Glazed Windows.
- 20mm Stone Benchtops Throughout.
- 2590mm High Ceilings Throughout.
- Ducted Heating & Evap Cooling throughout house
- Glazed Porcelain Tiles To All Wet Areas (Including Showerbase).
- Site Costs Included (Subject to T&C's).
- 900mm Appliances to Kitchen
- Coloured Concrete Driveway
- Dishwasher
- Laminated Timber Flooring to Living Areas & Carpets to Bedrooms
- TITLES - Q3 2026
- Recycled Water Connections
- 2000LT Slimline Water Tank
- Aston Homes \$20K Discount Applied - T&C's Apply



# Riverton 20



LOT WIDTH LOT DEPTH  
12.5m<sup>+</sup> 25m<sup>+</sup>



## TOTAL AREAS

FAMILY / MEALS	5790mm x 4505mm	BED 4	2900mm x 2940mm	TOTAL	186.32m <sup>2</sup>	20.06sq
MASTER SUITE	3190mm x 3840mm	RETREAT	2710mm x 3030mm			
BED 2	2900mm x 2900mm	GARAGE	5500mm x 6010mm	EXTERIOR LENGTH		17,800
BED 3	2900mm x 3240mm			EXTERIOR WIDTH		11,300

House size on brochure is based on the Avalon facade. Size may vary dependant on facade. Please refer to working drawings for complete dimensions.