



FOR ILLUSTRATION PURPOSES ONLY

## Westport 17

Royale 8.5 Facade



# \$633,786

### Lot 109 Electric Home - Refr. Cooling Diggers Rest (Watsons Reach Estate)

<b>Lot Size:</b>	336m <sup>2</sup>	<b>House Size:</b>	16.90sq
<b>Lot Price:</b>	\$360,000	<b>House Price:</b>	\$273,786

#### PACKAGE INCLUSIONS :

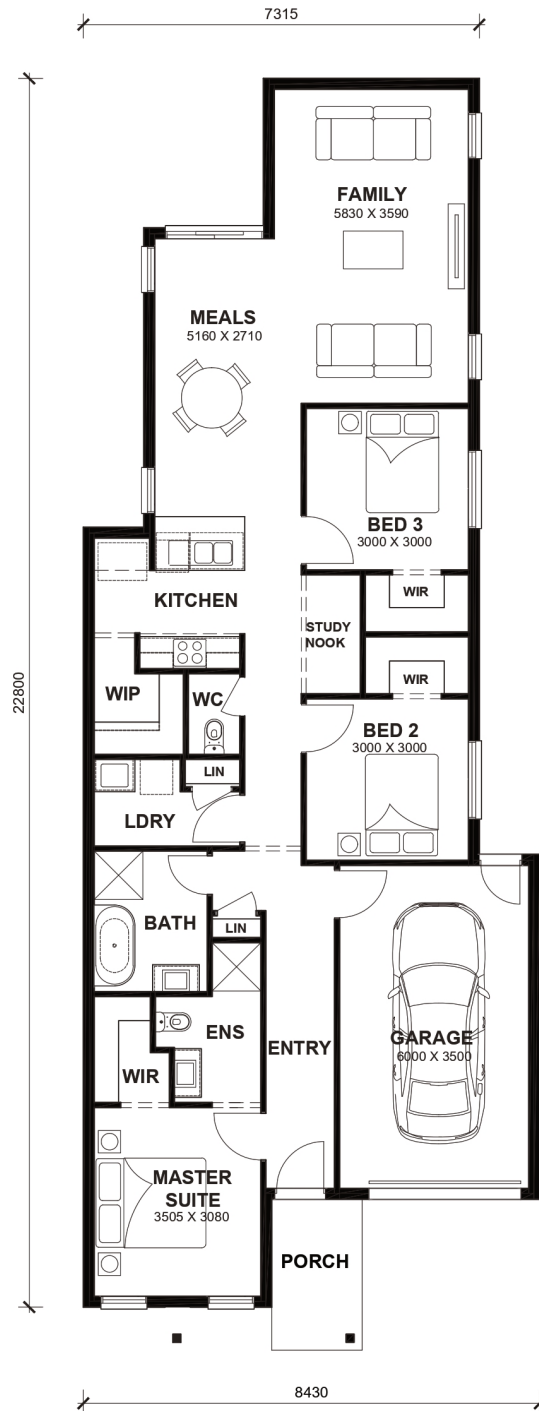
- 2.6kw Solar System
- Double Glazed Windows.
- 20mm Stone Benchtops Throughout.
- 2590mm High Ceilings Throughout.
- LED Tri-Colour Downlights Throughout.
- Glazed Porcelain Tiles To All Wet Areas (Including Showerbase).
- Soft Closing Drawers & Doors To All Cabinets.
- 900mm stainless steel appliances & 600mm Dishwasher (Design Specific).
- Blinds throughout house excluding bathrooms
- Coloured Concrete Driveway
- Dishwasher
- Ducted heating system + Refrigerated cooling to living area



# Westport 17



LOT WIDTH 8.5m+ LOT DEPTH 28m+



## TOTAL AREAS

FAMILY	5160mm x 3590mm	BED 3	3000mm x 3000mm	TOTAL	157.01m <sup>2</sup>	16.90sq
MEALS	5160mm x 2710mm	GARAGE	6000mm x 3500mm			
MASTER SUITE	3505mm x 3080mm			EXTERIOR LENGTH		22,800
BED 2	3000mm x 3000mm			EXTERIOR WIDTH		8,430

House size on brochure is based on the Avalon 8.5m facade. Size may vary dependant on facade. Please refer to working drawings for complete dimensions.