



FOR ILLUSTRATION PURPOSES ONLY

Kimberley 18
Hampton Facade



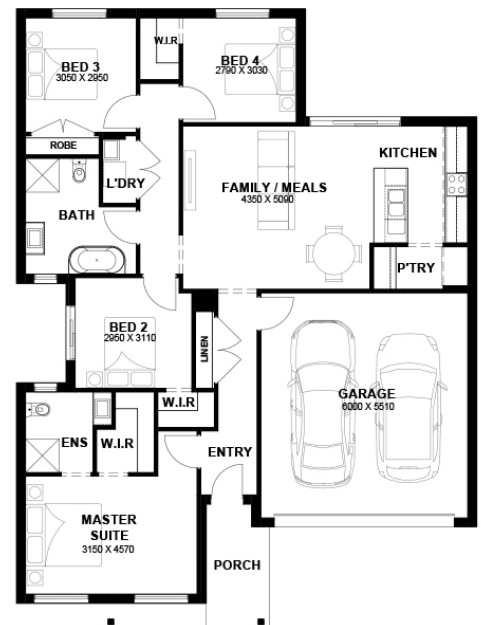
\$675,150

Lot 652 Society 1056
Fraser Rise (Society 1056 Estate)

Lot Size: 294m² **House Size:** 18.22sq
Lot Price: \$401,000 **House Price:** \$274,150

PACKAGE INCLUSIONS :

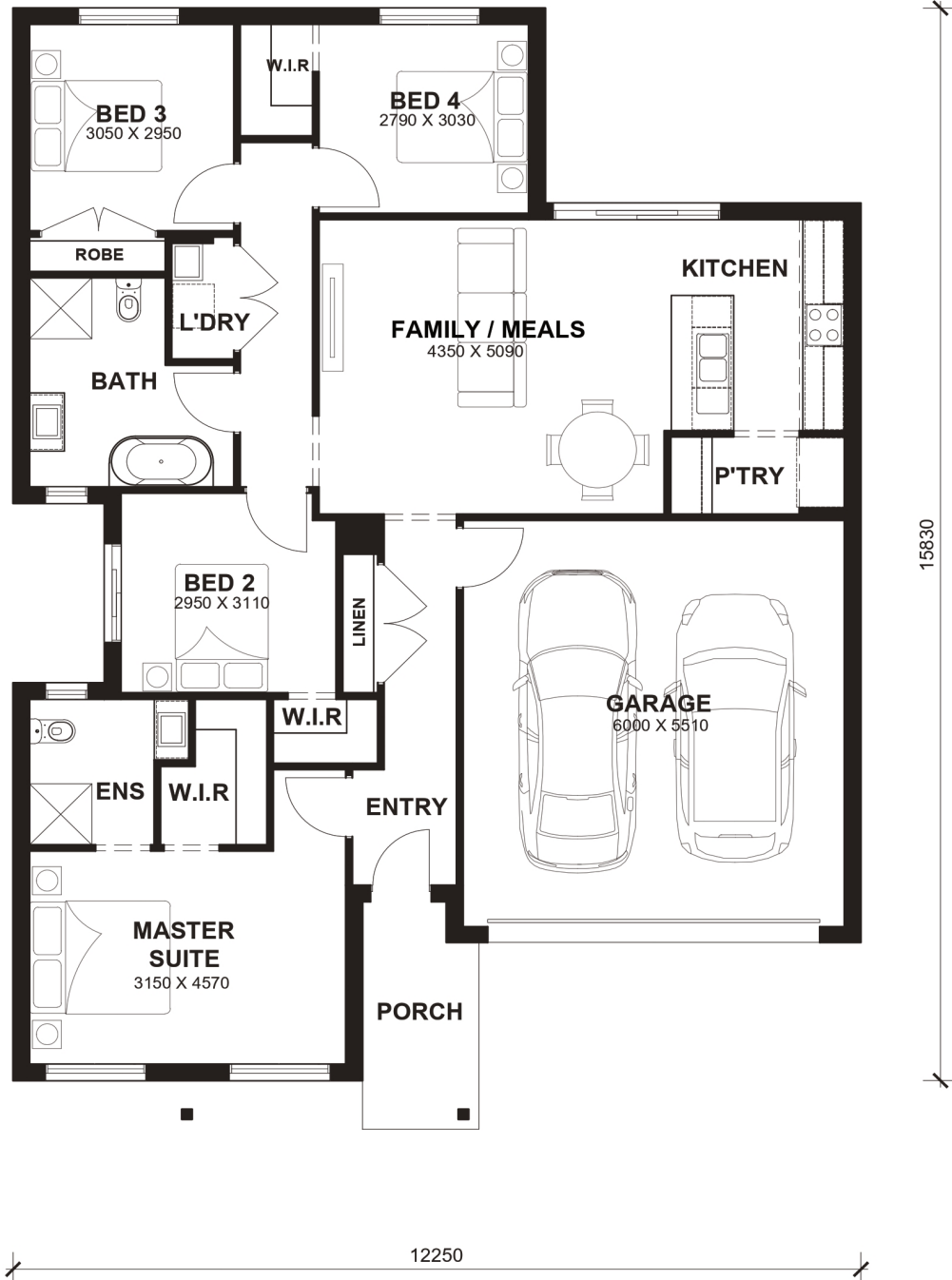
- 2.6kw Solar System
- Double Glazed Windows.
- 2590mm High Ceilings Throughout.
- LED Tri-Colour Downlights Throughout.
- Glazed Porcelain Tiles To All Wet Areas (Including Showerbase).
- Site Costs Included (Subject to T&C's).
- Soft Closing Drawers & Doors To All Cabinets.
- Coloured Concrete Driveway
- AMAZING 4.8 STARS ON PRODUCT REVIEW
- 20mm Stone Benchtops to Kitchen, Bathroom & Laundry Sink
- 30 YEARS STRUCTURAL GUARANTEE for piece of mind
- Future proof full electric home with 100% ducted refrigerated heating/cooling



Kimberly 18



LOT WIDTH 12.5m+
LOT DEPTH 21m+



TOTAL AREAS

FAMILY / MEALS	4350mm x 5090mm	BED 4	2790mm x 3030mm	TOTAL	169.22m ²	18.22sq
MASTER SUITE	3150mm x 4570mm	GARAGE	6000mm x 5510mm			
BED 2	2950mm x 3110mm			EXTERIOR LENGTH		15,830
BED 3	3050mm x 2950mm			EXTERIOR WIDTH		12,250

House size on brochure is based on the Avalon facade. Size may vary dependant on facade. Please refer to working drawings for complete dimensions.