



**Sienna 19**  
Stanley Facade



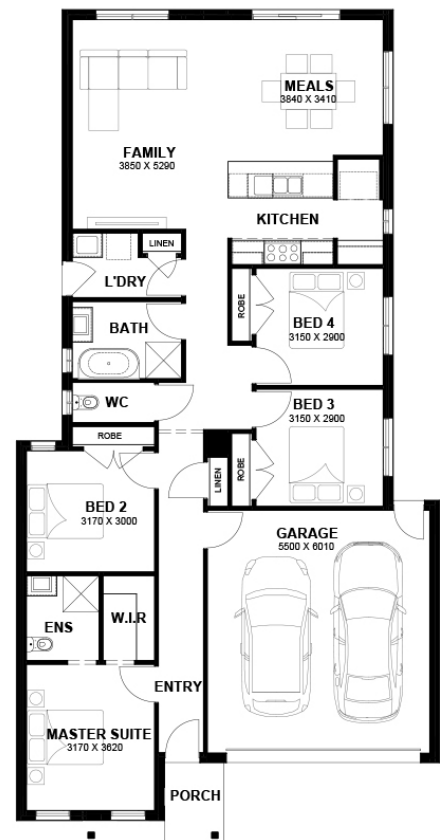
**\$631,787**

Lot 61032 Brilliant 4 bed  
Kalkallo (Cloverton Estate)

**Lot Size:** 294m<sup>2</sup>      **House Size:** 19.15sq  
**Lot Price:** \$346,000      **House Price:** \$285,787

**PACKAGE INCLUSIONS :**

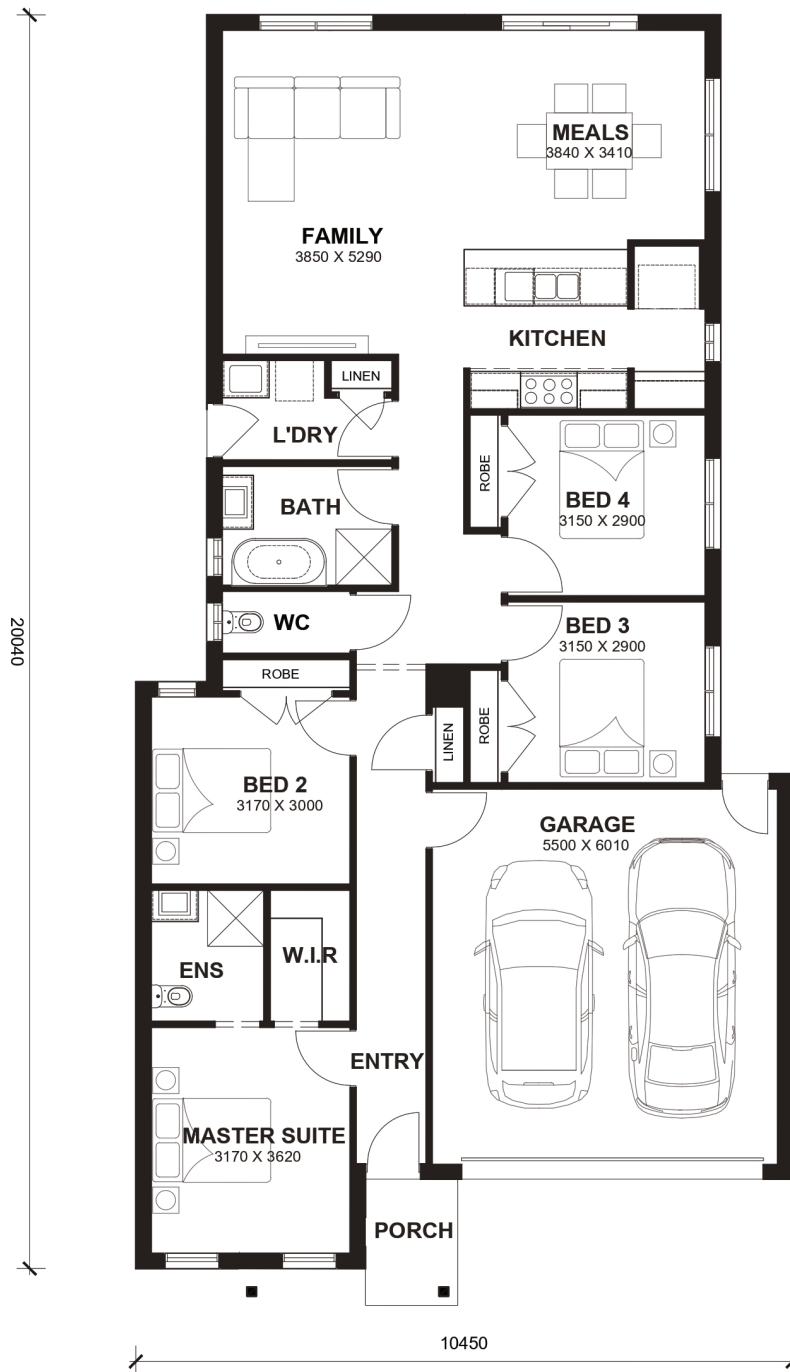
- 2.6kw Solar System
- Double Glazed Windows.
- 2590mm High Ceilings Throughout.
- Flyscreens To All Openable Windows.
- LED Tri-Colour Downlights Throughout.
- Glazed Porcelain Tiles To All Wet Areas (Including Showerbase).
- Soft Closing Drawers & Doors To All Cabinets.
- Blinds throughout house excluding bathrooms
- Coloured Concrete Driveway
- AMAZING 4.8 STARS ON PRODUCT REVIEW
- Full Electric Heating and Refrigerated Cooling System
- Laminate Flooring to Living Areas & Carpet to Bedrooms
- Recycled Water Connections



# Sienna 19



LOT WIDTH LOT DEPTH  
10.5m<sup>+</sup> 28m<sup>+</sup>



## TOTAL AREAS

FAMILY	3850mm x 5290mm	BED 3	3150mm x 2900mm	TOTAL	177.87m <sup>2</sup>	19.15sq
MEALS	3840mm x 3410mm	BED 4	3150mm x 2900mm			
MASTER SUITE	3170mm x 3620mm	GARAGE	5500mm x 6010mm	EXTERIOR LENGTH		20,040
BED 2	3170mm x 3000mm			EXTERIOR WIDTH		10,450

House size on brochure is based on the Avalon facade. Size may vary dependant on facade. Please refer to working drawings for complete dimensions.