



FOR ILLUSTRATION PURPOSES ONLY

## Westport 15

Eltham 8.5 Facade



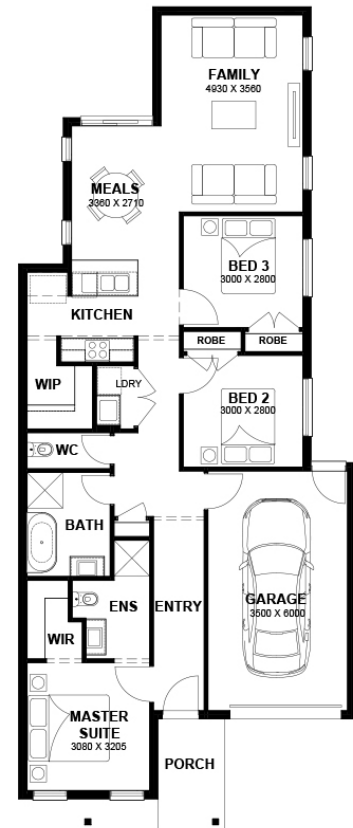
# \$591,887

Lot 33113 Q4 2026 Title  
**Kalkallo (Cloverton Estate)**

<b>Lot Size:</b>	262.50m <sup>2</sup>	<b>House Size:</b>	14.77sq
<b>Lot Price:</b>	\$310,000	<b>House Price:</b>	\$281,887

### PACKAGE INCLUSIONS :

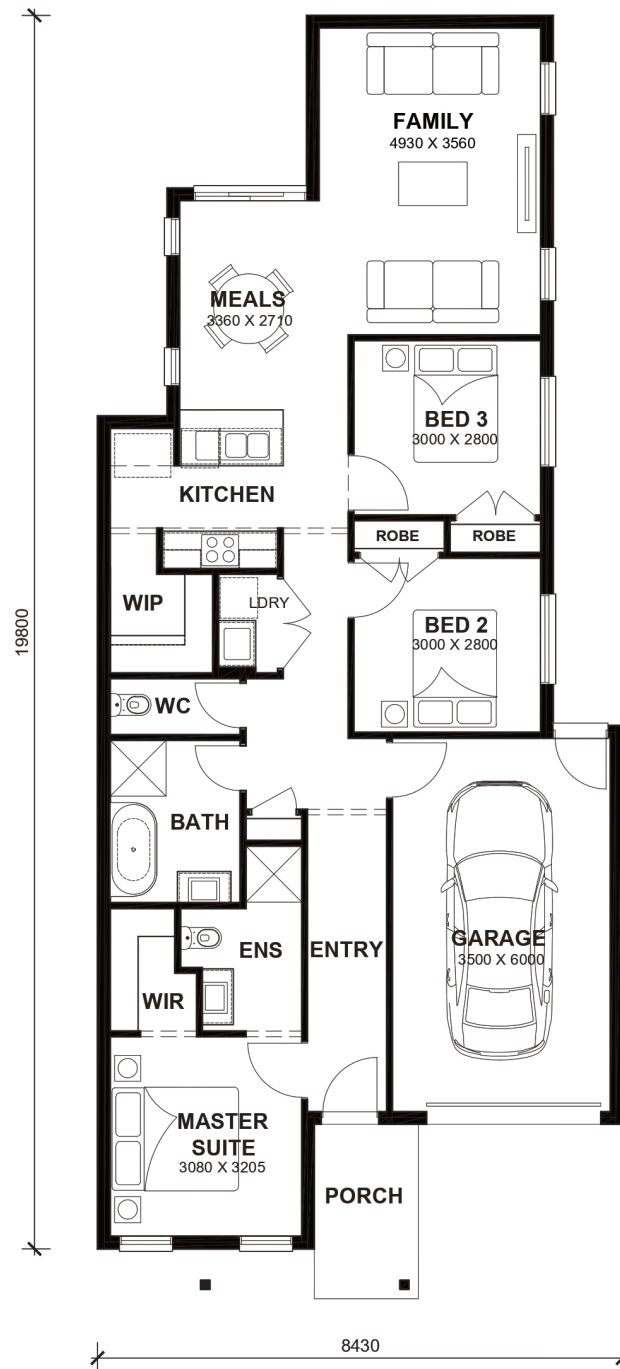
- 2.6kw Solar System
- Double Glazed Windows.
- 2590mm High Ceilings Throughout.
- Flyscreens To All Openable Windows.
- LED Tri-Colour Downlights Throughout.
- Glazed Porcelain Tiles To All Wet Areas (Including Showerbase).
- Soft Closing Drawers & Doors To All Cabinets.
- Blinds throughout house excluding bathrooms
- Coloured Concrete Driveway
- AMAZING 4.8 STARS ON PRODUCT REVIEW
- Dishwasher
- Full Electric Heating and Refrigerated Cooling System
- Laminate Flooring to Living Areas & Carpet to Bedrooms
- Recycled Water Connections



# Westport 15



LOT WIDTH 8.5m+  
LOT DEPTH 25m+



## TOTAL AREAS

FAMILY	4930mm x 3560mm	BED 3	3000mm x 2800mm	TOTAL	13718m <sup>2</sup>	14.77sq
MEALS	3360mm x 2710mm	GARAGE	3500mm x 6000mm			
MASTER SUITE	3080mm x 3205mm			EXTERIOR LENGTH		19,800
BED 2	3000mm x 2800mm			EXTERIOR WIDTH		8,430

House size on brochure is based on the Avalon 8.5m facade. Size may vary dependant on facade. Please refer to working drawings for complete dimensions.