



FOR ILLUSTRATION PURPOSES ONLY

## Eden 15.5

Monsanto Facade



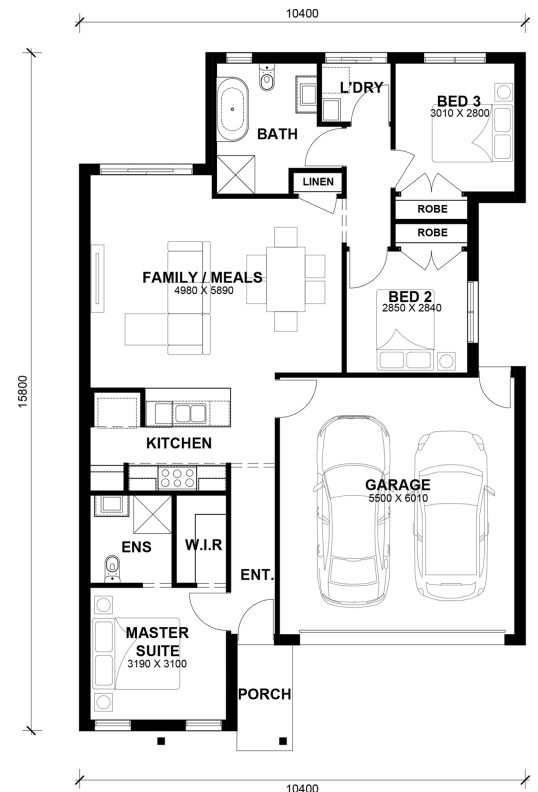
# \$585,787

### Lot 314 Q4-'26 - Full Electric Home Diggers Rest (Watsons Reach Estate)

<b>Lot Size:</b>	262.50m <sup>2</sup>	<b>House Size:</b>	15.50sq
<b>Lot Price:</b>	\$315,000	<b>House Price:</b>	\$270,787

#### PACKAGE INCLUSIONS :

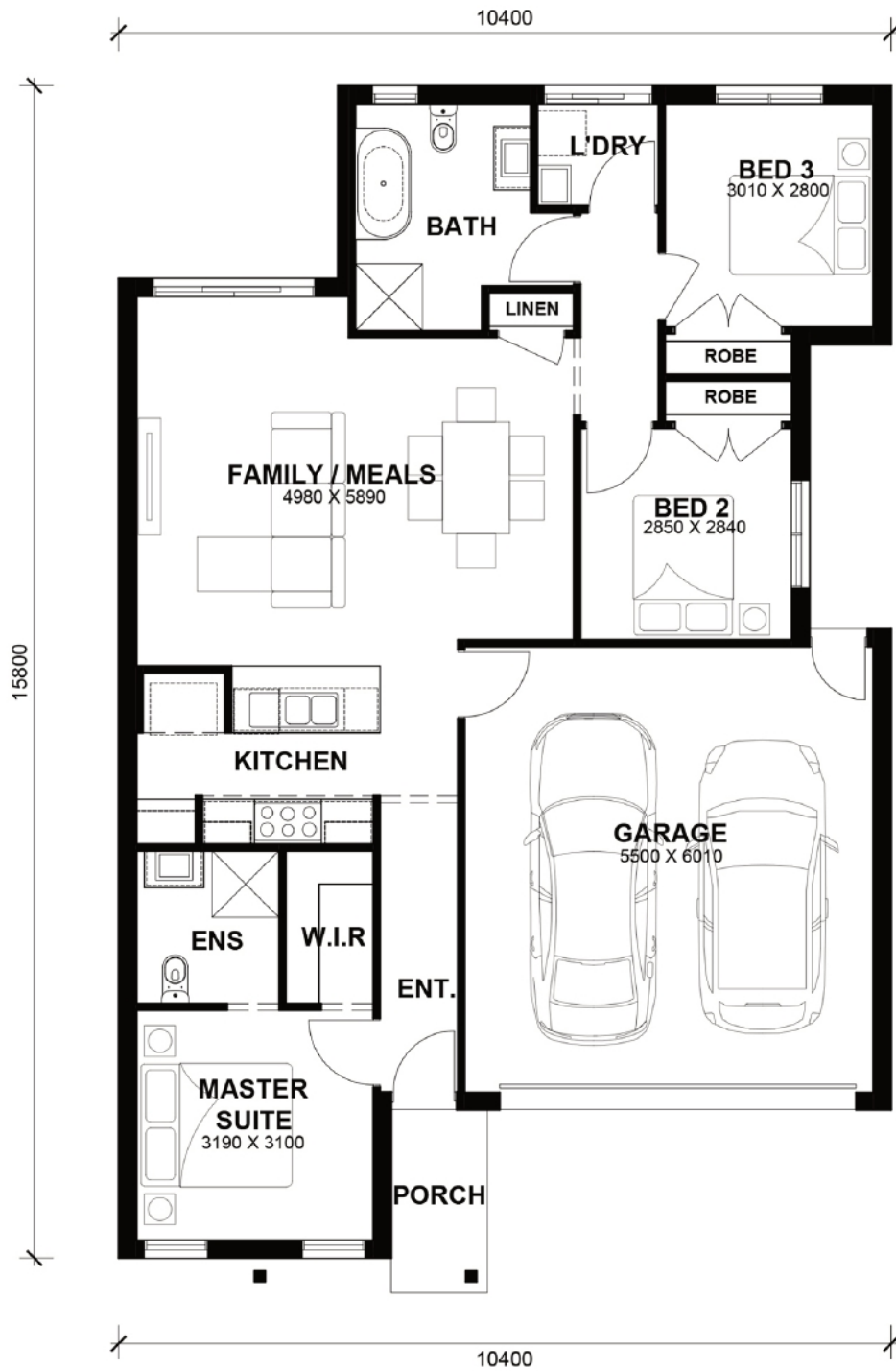
- 2.6kw Solar System
- Double Glazed Windows.
- 20mm Stone Benchtops Throughout.
- 2590mm High Ceilings Throughout.
- LED Tri-Colour Downlights Throughout.
- Glazed Porcelain Tiles To All Wet Areas (Including Showerbase).
- Soft Closing Drawers & Doors To All Cabinets.
- 900mm stainless steel appliances & 600mm Dishwasher (Design Specific).
- Blinds throughout house excluding bathrooms
- Coloured Concrete Driveway
- Dishwasher
- Future proof full electric home with 100% ducted refrigerated heating/cooling



# Eden 15.5



LOT WIDTH 10.5m<sup>+</sup> LOT DEPTH 21m<sup>+</sup>



## TOTAL AREAS

FAMILY / MEALS	4980mm x 5980mm	GARAGE	5500mm x 6010mm	TOTAL	143.12m <sup>2</sup>	15.4lsq
MASTER SUITE	3190mm x 3100mm					
BED 2	2850mm x 2840mm			EXTERIOR LENGTH		15,800
BED 3	3010mm x 2800mm			EXTERIOR WIDTH		10,400

House size on brochure is based on the Avalon facade. Size may vary dependant on facade. Please refer to working drawings for complete dimensions.