



FOR ILLUSTRATION PURPOSES ONLY

Westport 15

Eltham 8.5 Facade



\$582,187

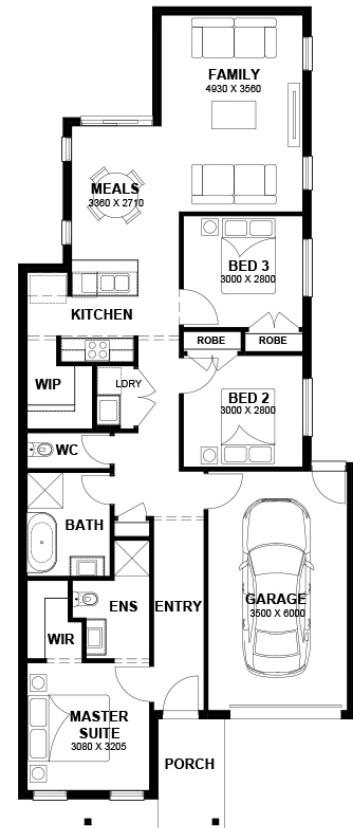
Lot 824 Titles soon - Q3 026

Donnybrook (Balmain Estate)

Lot Size:	238m ²	House Size:	14.77sq
Lot Price:	\$310,000	House Price:	\$272,187

PACKAGE INCLUSIONS :

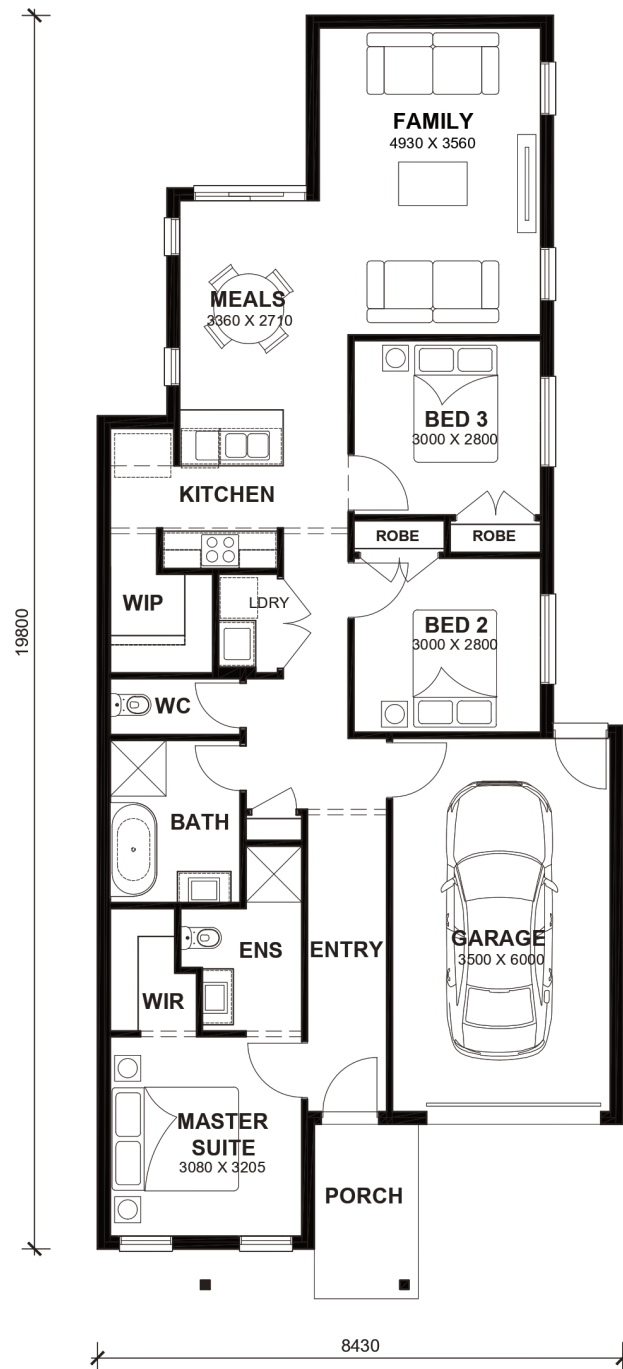
- 2.6kw Solar System
- Double Glazed Windows.
- 20mm Stone Benchtops Throughout.
- 2590mm High Ceilings Throughout.
- LED Tri-Colour Downlights Throughout.
- Glazed Porcelain Tiles To All Wet Areas (Including Showerbase).
- Site Costs Included (Subject to T&C's).
- Soft Closing Drawers & Doors To All Cabinets.
- Tile Splashback To Kitchen.
- Blinds throughout house excluding bathrooms
- Coloured Concrete Driveway
- Heating & Cooling
- AMAZING 4.8 STARS ON PRODUCT REVIEW
- Dishwasher
- Laminate flooring to living areas & Carpeted bedrooms



Westport 15



LOT WIDTH 8.5m+
LOT DEPTH 25m+



TOTAL AREAS

FAMILY	4930mm x 3560mm	BED 3	3000mm x 2800mm	TOTAL	13718m ²	14.77sq
MEALS	3360mm x 2710mm	GARAGE	3500mm x 6000mm			
MASTER SUITE	3080mm x 3205mm			EXTERIOR LENGTH		19,800
BED 2	3000mm x 2800mm			EXTERIOR WIDTH		8,430

House size on brochure is based on the Avalon 8.5m facade. Size may vary dependant on facade. Please refer to working drawings for complete dimensions.