



FOR ILLUSTRATION PURPOSES ONLY

## Cassini 19

Hamilton Natural  
Facade



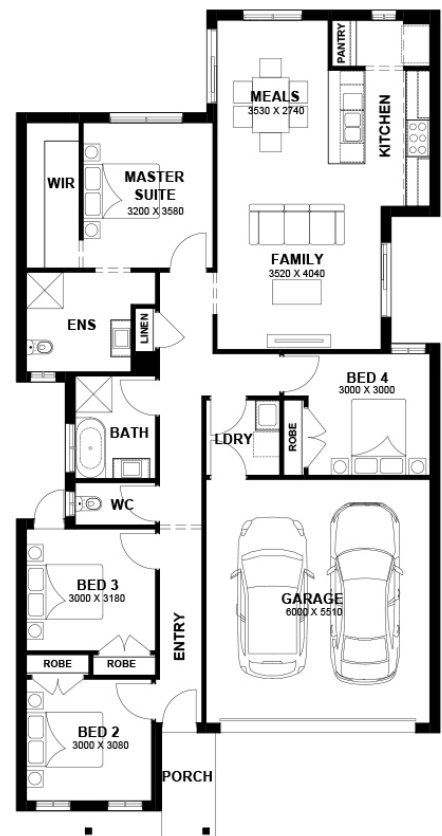
# \$692,159

Lot 818 Stringybark Drive  
Lara

|                                    |                               |
|------------------------------------|-------------------------------|
| <b>Lot Size:</b> 474m <sup>2</sup> | <b>House Size:</b> 19.03sq    |
| <b>Lot Price:</b> \$390,000        | <b>House Price:</b> \$302,159 |

### PACKAGE INCLUSIONS :

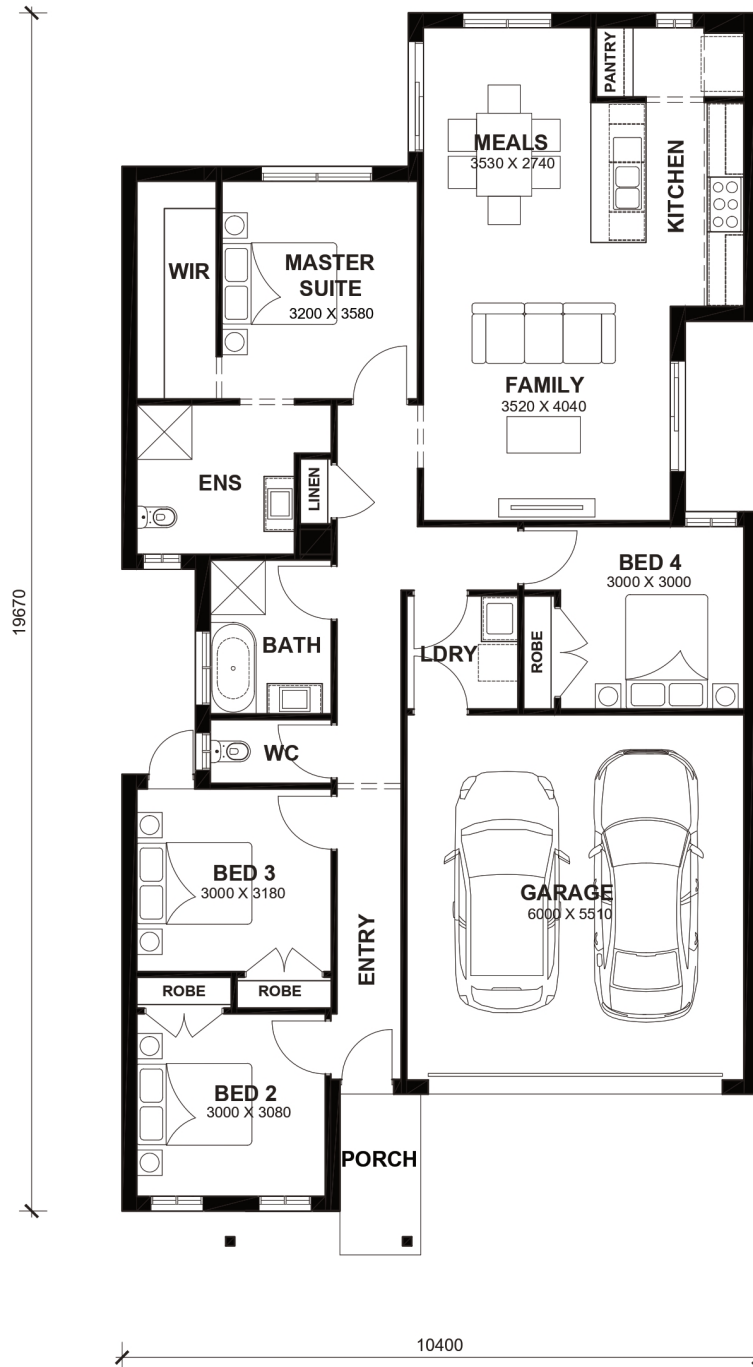
- Led Downlights throughout the House
- Double Glazed Windows.
- Feature Cabinetry To Kitchen and Bathrooms.
- Glazed Porcelain Tiles To All Wet Areas (Including Showerbase).
- Site Costs Included (Subject to T&C's).
- Ducted Heating & Cooling System: split system air-conditioner
- Dishwasher
- Laminated Timber Flooring to Living Areas & Carpets to Bedrooms
- TITLED LAND, READY TO BUILD ON!
- Coloured Concrete Driveway, Front & Rear Landscaping, Letter Box, Clothesline & Block Out Roller Blinds,
- 20mm Stone Benchtops to Kitchen, Bathroom & Laundry Sink
- 30 YEARS STRUCTURAL GUARANTEE
- Aston \$30K Advantage Discount Applied (Ends 31/05/2026)



# Cassini 19



LOT WIDTH LOT DEPTH  
10.5m<sup>+</sup> 25m<sup>+</sup>



## TOTAL AREAS

|              |                 |        |                 |                 |                      |         |
|--------------|-----------------|--------|-----------------|-----------------|----------------------|---------|
| FAMILY       | 3520mm x 4040mm | BED 3  | 3000mm x 3180mm | TOTAL           | 176.78m <sup>2</sup> | 19.03sq |
| MEALS        | 3530mm x 2740mm | BED 4  | 3000mm x 3000mm |                 |                      |         |
| MASTER SUITE | 3200mm x 3580mm | GARAGE | 6000mm x 5510mm | EXTERIOR LENGTH |                      | 19,670  |
| BED 2        | 3000mm x 3080mm |        |                 | EXTERIOR WIDTH  |                      | 10,400  |

House size on brochure is based on the Avalon facade. Size may vary dependant on facade. Please refer to working drawings for complete dimensions.