



## Westport 15

Avalon 8.5 Facade



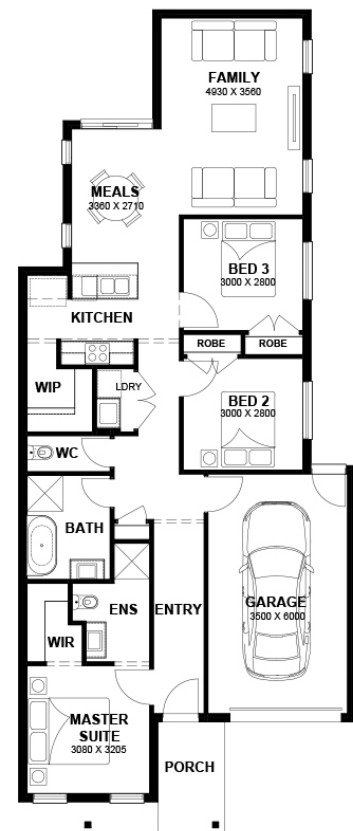
# \$599,642

Lot 1225 Munro Avenue  
Melton South (Maplewood Estate)

<b>Lot Size:</b> 350m <sup>2</sup>	<b>House Size:</b> 14.77sq
<b>Lot Price:</b> \$325,000	<b>House Price:</b> \$274,642

### PACKAGE INCLUSIONS :

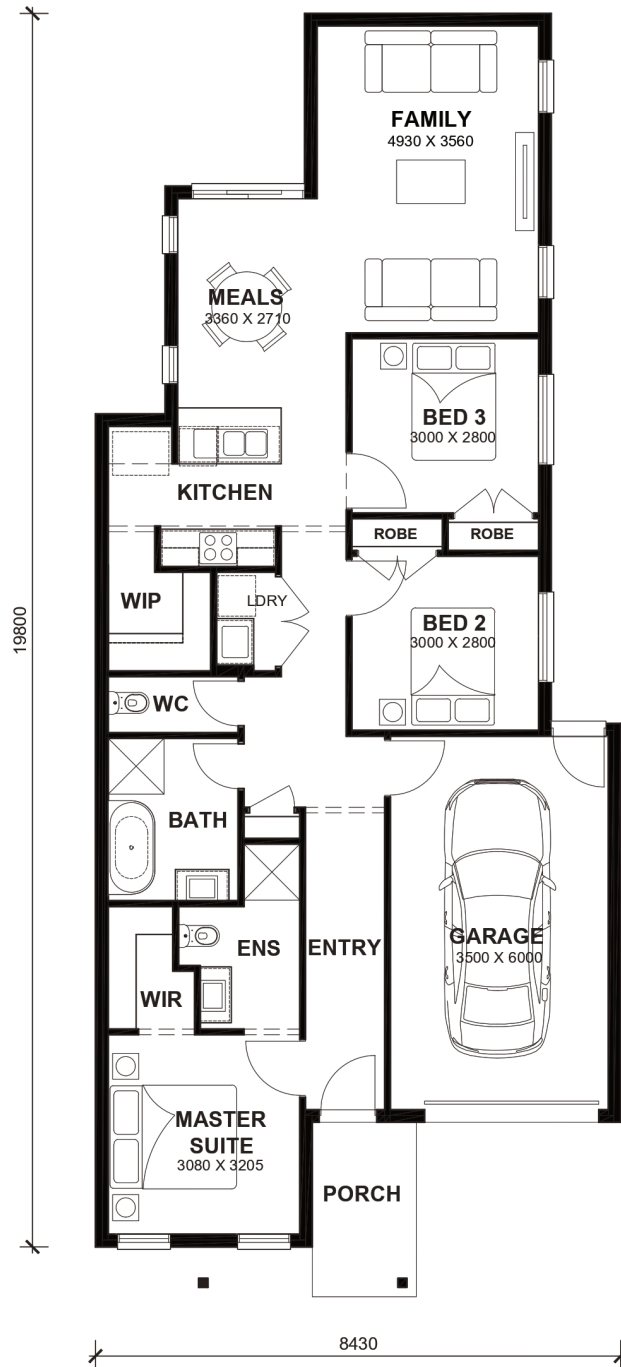
- Led Downlights throughout the House
- Double Glazed Windows.
- Feature Cabinetry To Kitchen and Bathrooms.
- Glazed Porcelain Tiles To All Wet Areas (Including Showerbase).
- Site Costs Included (Subject to T&C's).
- Soft Closing Drawers & Doors To All Cabinets.
- Ducted Heating & Cooling System: split system air-conditioner
- Dishwasher
- Laminated Timber Flooring to Living Areas & Carpets to Bedrooms
- Coloured Concrete Driveway, Front & Rear Landscaping, Letter Box, Clothesline & Block Out Roller Blinds,
- Aston Homes \$20K Discount Applied - T&C's Apply
- 2590mm High Ceilings
- 20mm Stone Bench to Ensuite, Bathroom and Kitchen



# Westport 15



LOT WIDTH 8.5m+  
LOT DEPTH 25m+



## TOTAL AREAS

FAMILY	4930mm x 3560mm	BED 3	3000mm x 2800mm	TOTAL	13718m <sup>2</sup>	14.77sq
MEALS	3360mm x 2710mm	GARAGE	3500mm x 6000mm			
MASTER SUITE	3080mm x 3205mm			EXTERIOR LENGTH		19,800
BED 2	3000mm x 2800mm			EXTERIOR WIDTH		8,430

House size on brochure is based on the Avalon 8.5m facade. Size may vary dependant on facade. Please refer to working drawings for complete dimensions.