



FOR ILLUSTRATION PURPOSES ONLY

Eden 15.5

Hamilton Gable
Facade



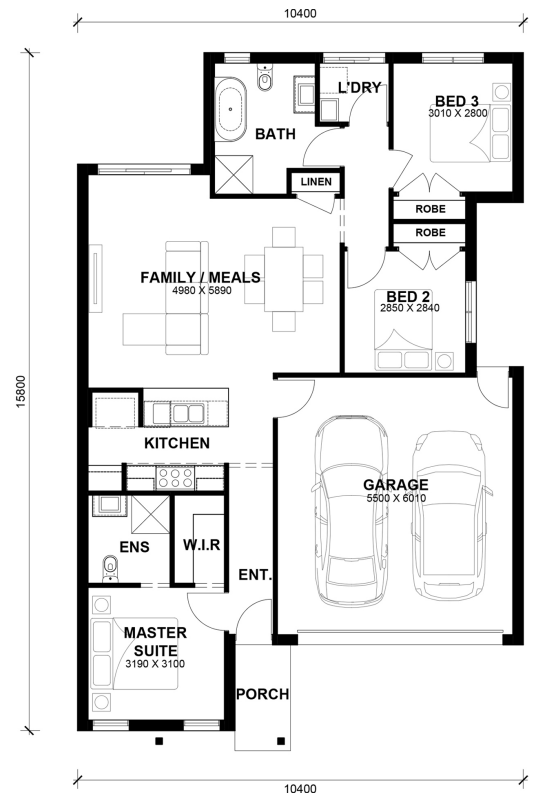
\$647,150

Lot 779 Springfall Road
Tarneit (Harlow Estate)

Lot Size: 333m ²	House Size: 15.50sq
Lot Price: \$373,000	House Price: \$274,150

PACKAGE INCLUSIONS :

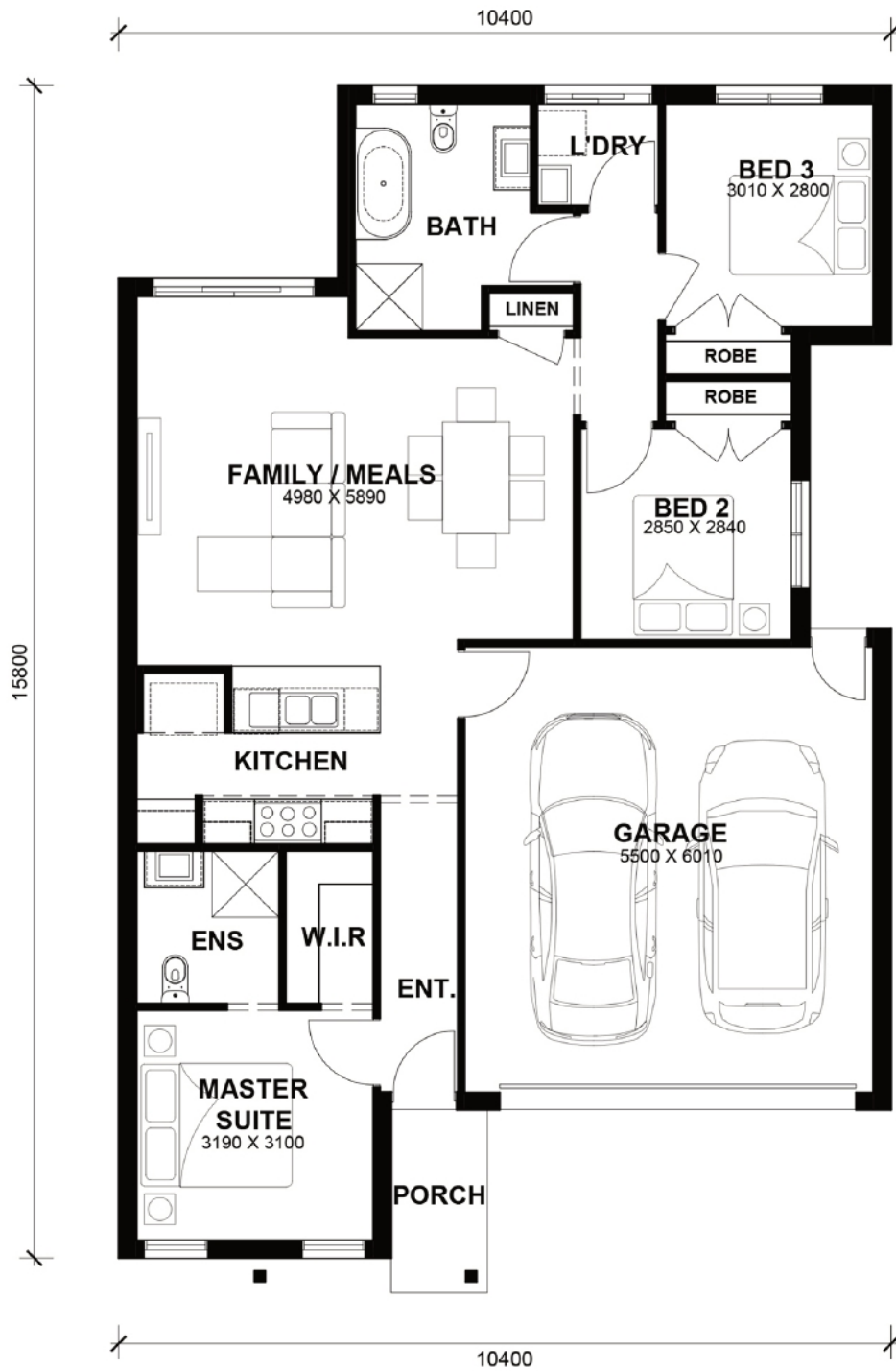
- Tiles/Laminate flooring in living areas
- LED Tri-Colour Downlights Throughout.
- Site Costs Included (Subject to T&C's).
- Soft Closing Drawers & Doors To All Cabinets.
- Blinds throughout house excluding bathrooms
- Heating & Cooling
- AMAZING 4.8 STARS ON PRODUCT REVIEW
- 2700 Ceiling + 2340 internal High Doors
- Colored Driveway including path to house
- All standard design homes include a 7-star energy rating, featuring solar panels, a heat pump, R5 insulation batts in the ceiling, R2.5 insulation in external walls, and double-glazed windows throughout the house."



Eden 15.5



LOT WIDTH 10.5m⁺ LOT DEPTH 21m⁺



TOTAL AREAS

FAMILY / MEALS	4980mm x 5980mm	GARAGE	5500mm x 6010mm	TOTAL	143.12m ²	15.4lsq
MASTER SUITE	3190mm x 3100mm					
BED 2	2850mm x 2840mm			EXTERIOR LENGTH		15,800
BED 3	3010mm x 2800mm			EXTERIOR WIDTH		10,400

House size on brochure is based on the Avalon facade. Size may vary dependant on facade. Please refer to working drawings for complete dimensions.