



FOR ILLUSTRATION PURPOSES ONLY

## Westport 15

Eltham 8.5 Facade



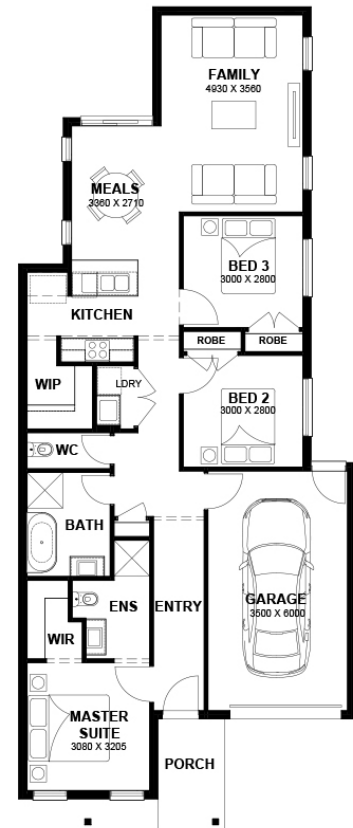
# \$579,411

Lot 821 Titleds Q3 2026  
Donnybrook (Balmain Estate)

<b>Lot Size:</b> 238m <sup>2</sup>	<b>House Size:</b> 14.77sq
<b>Lot Price:</b> \$310,000	<b>House Price:</b> \$269,411

### PACKAGE INCLUSIONS :

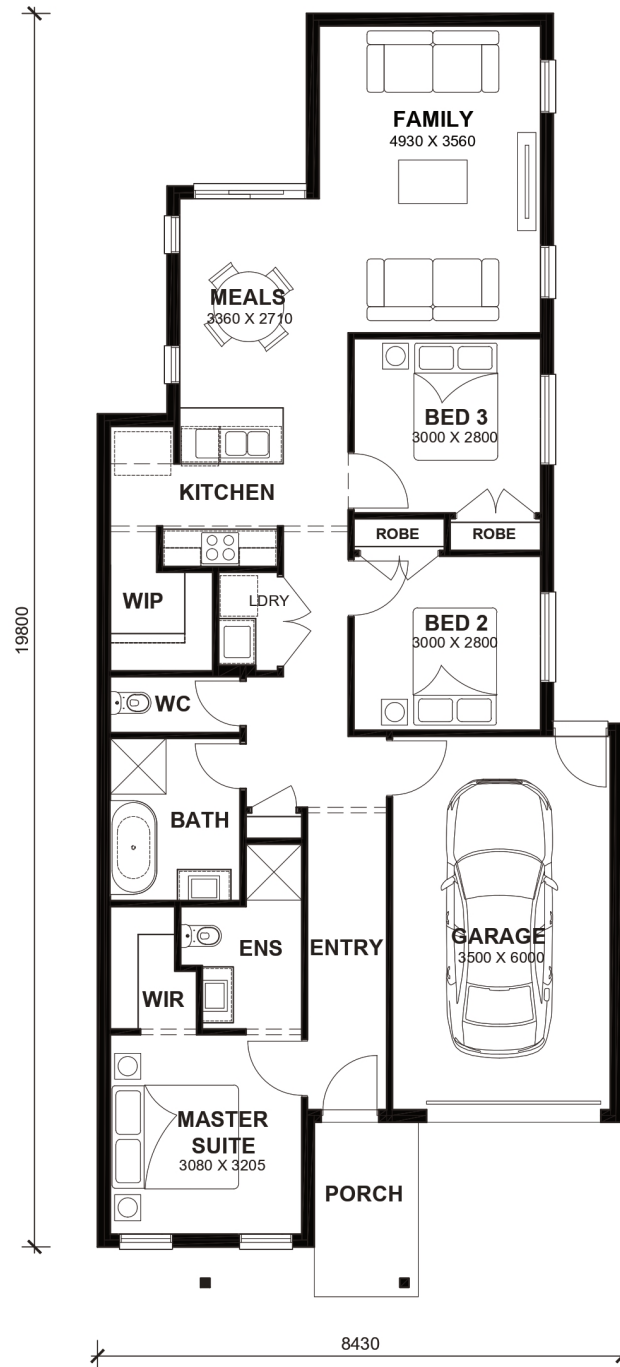
- 2.6kw Solar System
- Double Glazed Windows.
- 20mm Stone Benchtops Throughout.
- LED Tri-Colour Downlights Throughout.
- Site Costs Included (Subject to T&C's).
- Coloured Concrete Driveway
- Recess shower bases to both bathrooms
- Soft Closing Drawers & Doors To All Cabinets.
- Ducted Heating & Cooling System: split system air-conditioner
- 4.8 STAR RATING ON PRODUCT REVIEWS
- Dishwasher
- Flooring throughout
- Full Electric Heating/Cooling



# Westport 15



LOT WIDTH 8.5m+  
LOT DEPTH 25m+



## TOTAL AREAS

FAMILY	4930mm x 3560mm	BED 3	3000mm x 2800mm	TOTAL	13718m <sup>2</sup>	14.77sq
MEALS	3360mm x 2710mm	GARAGE	3500mm x 6000mm			
MASTER SUITE	3080mm x 3205mm			EXTERIOR LENGTH		19,800
BED 2	3000mm x 2800mm			EXTERIOR WIDTH		8,430

House size on brochure is based on the Avalon 8.5m facade. Size may vary dependant on facade. Please refer to working drawings for complete dimensions.