



FOR ILLUSTRATION PURPOSES ONLY

Aspen 22.5
Monsanto Facade



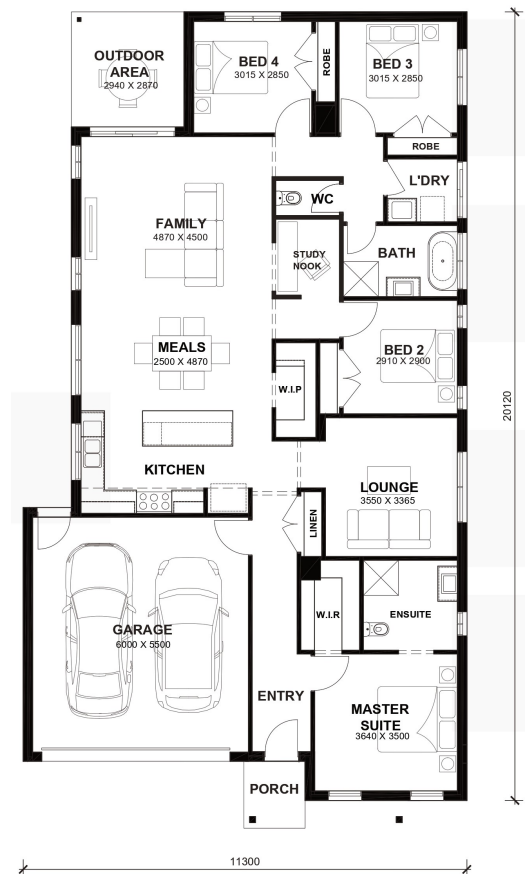
\$698,048

Lot 109 Turn Key
Fraser Rise (Prosperity Estate)

Lot Size:	373.50m ²	House Size:	22.51sq
Lot Price:	\$395,000	House Price:	\$303,048

PACKAGE INCLUSIONS :

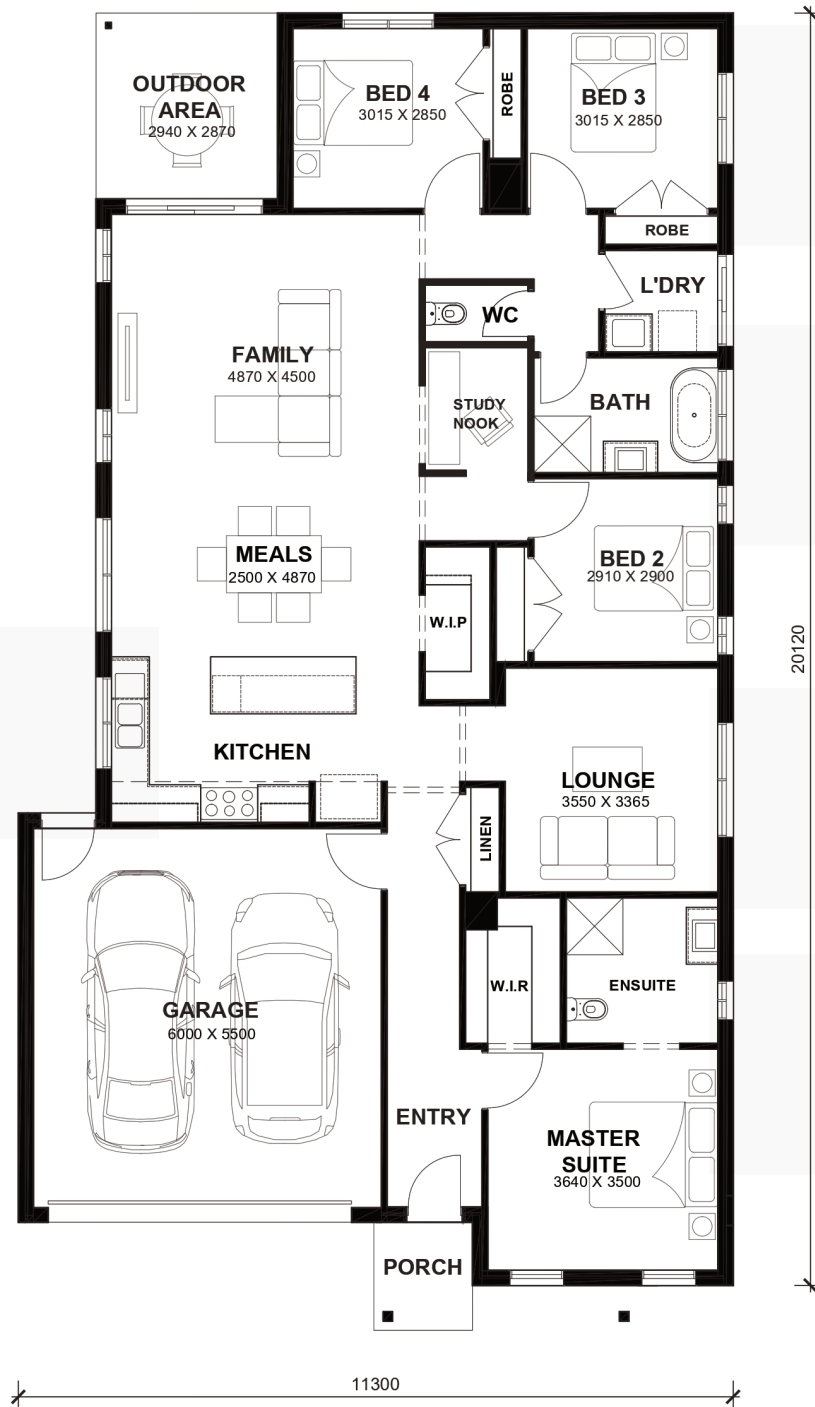
- 2.6kw Solar System
- Double Glazed Windows.
- 20mm Stone Benchtops Throughout.
- LED Tri-Colour Downlights Throughout.
- Site Costs Included (Subject to T&C's).
- Coloured Concrete Driveway
- Recess shower bases to both bathrooms
- Soft Closing Drawers & Doors To All Cabinets.
- Ducted Heating & Cooling System: split system air-conditioner
- 4.8 STAR RATING ON PRODUCT REVIEWS
- Dishwasher
- Flooring throughout
- Full Turn Key Package : Front & Rear Landscaping, Driveway, Blinds, Clothesline, Flyscreens , TV Antenna, and Mailbox



Aspen 22.5



LOT WIDTH 12.5m⁺ LOT DEPTH 28m⁺



TOTAL AREAS

FAMILY	4870mm x 4500mm	BED 4	3015mm x 2850mm	TOTAL	209.14m ²	22.51sq
MEALS	2500mm x 4870mm	LOUNGE	3550mm x 3365mm			
MASTER SUITE	3640mm x 3500mm	OUTDOOR AREA	2940mm x 2870mm	EXTERIOR LENGTH		20,120
BED 2	2910mm x 2900mm	GARAGE	6000mm x 5500mm	EXTERIOR WIDTH		11,300
BED 3	3015mm x 2850mm					

House size on brochure is based on the Avalon facade. Size may vary dependant on facade. Please refer to working drawings for complete dimensions.