



FOR ILLUSTRATION PURPOSES ONLY

**Eden 15.5**  
Allura Facade



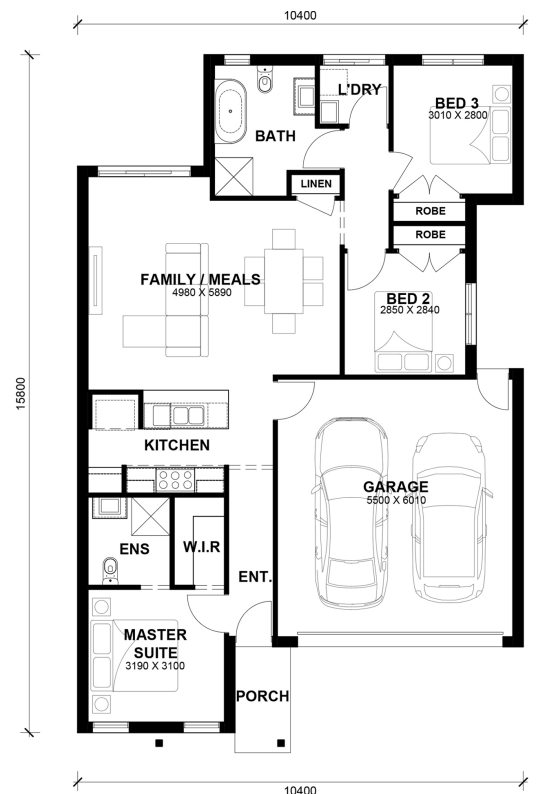
**\$659,150**

Lot 1701 Verdant Hill  
Tarnait

<b>Lot Size:</b>	350m <sup>2</sup>	<b>House Size:</b>	15.50sq
<b>Lot Price:</b>	\$395,000	<b>House Price:</b>	\$264,150

**PACKAGE INCLUSIONS :**

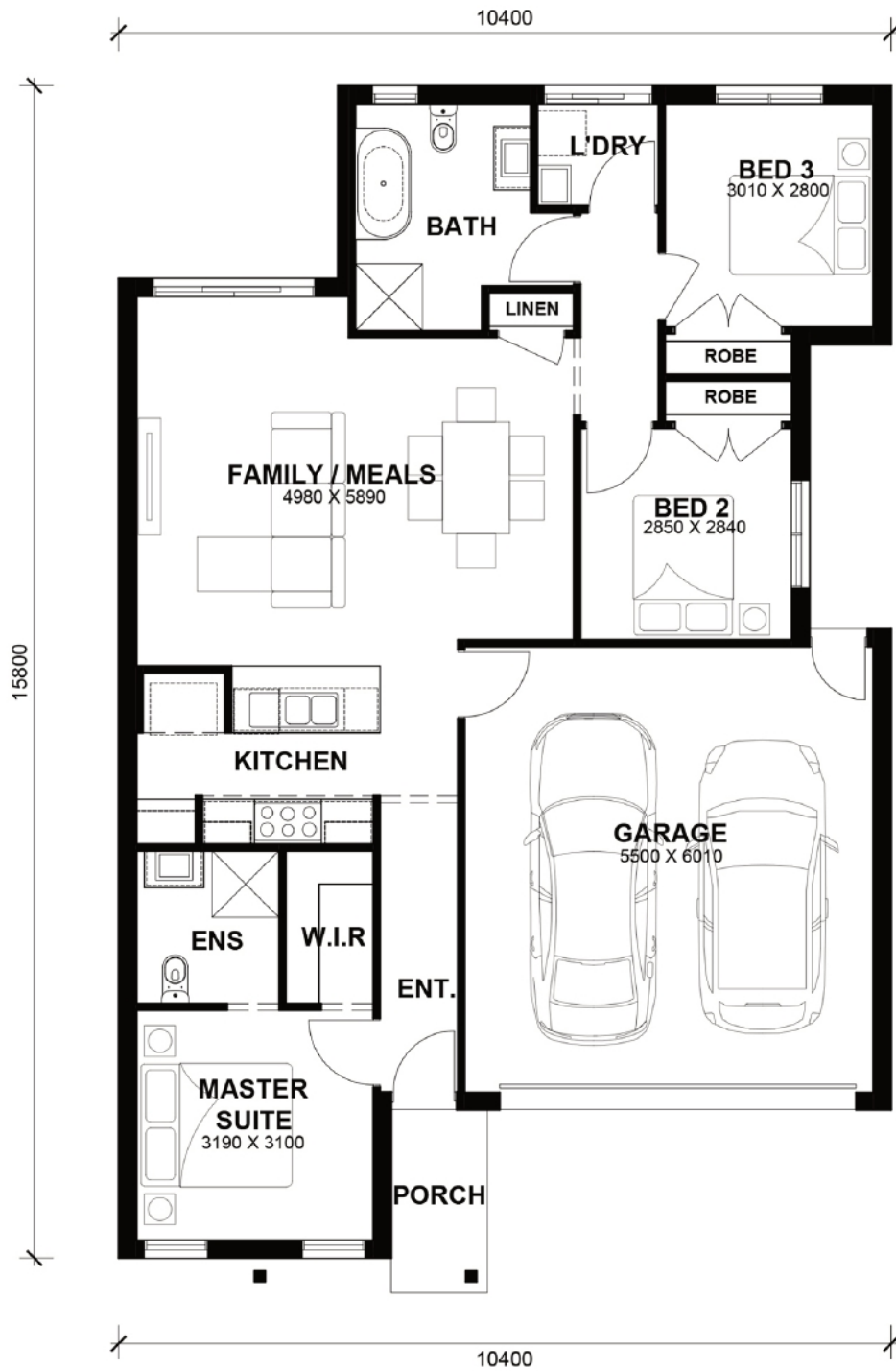
- Tiles/Laminate flooring in living areas
- Led Downlights throughout the House
- Double Glazed Windows.
- Developer Guidelines & Covenants Included.
- LED Tri-Colour Downlights Throughout.
- Site Costs Included (Subject to T&C's).
- Soft Closing Drawers & Doors To All Cabinets.
- Ducted Heating & Cooling System: split system air-conditioner
- AMAZING 4.8 STARS ON PRODUCT REVIEW
- 2700 Ceiling + 2340 internal High Doors
- All standard design homes include a 7-star energy rating, featuring solar panels, a heat pump, R5 insulation batts in the ceiling, R2.5 insulation in external walls, and double-glazed windows throughout the house."



# Eden 15.5



LOT WIDTH 10.5m<sup>+</sup> LOT DEPTH 21m<sup>+</sup>



## TOTAL AREAS

FAMILY / MEALS	4980mm x 5980mm	GARAGE	5500mm x 6010mm	TOTAL	143.12m <sup>2</sup>	15.4lsq
MASTER SUITE	3190mm x 3100mm					
BED 2	2850mm x 2840mm			EXTERIOR LENGTH		15,800
BED 3	3010mm x 2800mm			EXTERIOR WIDTH		10,400

House size on brochure is based on the Avalon facade. Size may vary dependant on facade. Please refer to working drawings for complete dimensions.