



FOR ILLUSTRATION PURPOSES ONLY

Attica 32.5

Oslo Facade



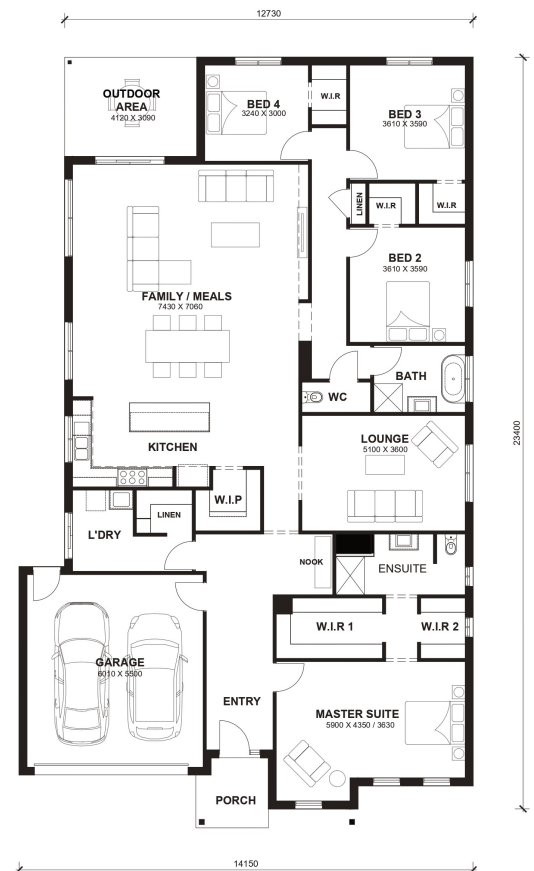
\$894,150

Lot 1811 Underbank Bacchus Marsh (Underbank Estate)

Lot Size:	1037.50m ²	House Size:	32.63sq
Lot Price:	\$475,000	House Price:	\$419,150

PACKAGE INCLUSIONS :

- Tiles/Laminate flooring in living areas
- Double Glazed Windows.
- LED Tri-Colour Downlights Throughout.
- Site Costs Included (Subject to T&C's).
- Blinds throughout house Excluding bathrooms
- 2700 Ceiling + 2340 internal High Doors
- Double basin to Ensuite with 1200x900 shower base
- Colored Driveway including path to house
- Floor to ceiling tiles to Bath and Ensuite including Niches to showers
- 40mm stone to kitchen & 20mm stone to bathrooms
- All standard design homes include a 7-star energy rating, featuring solar panels, a heat pump, R5 insulation batts in the ceiling, R2.5 insulation in external walls, and double-glazed windows throughout the house."



Attica 32.5



4



2

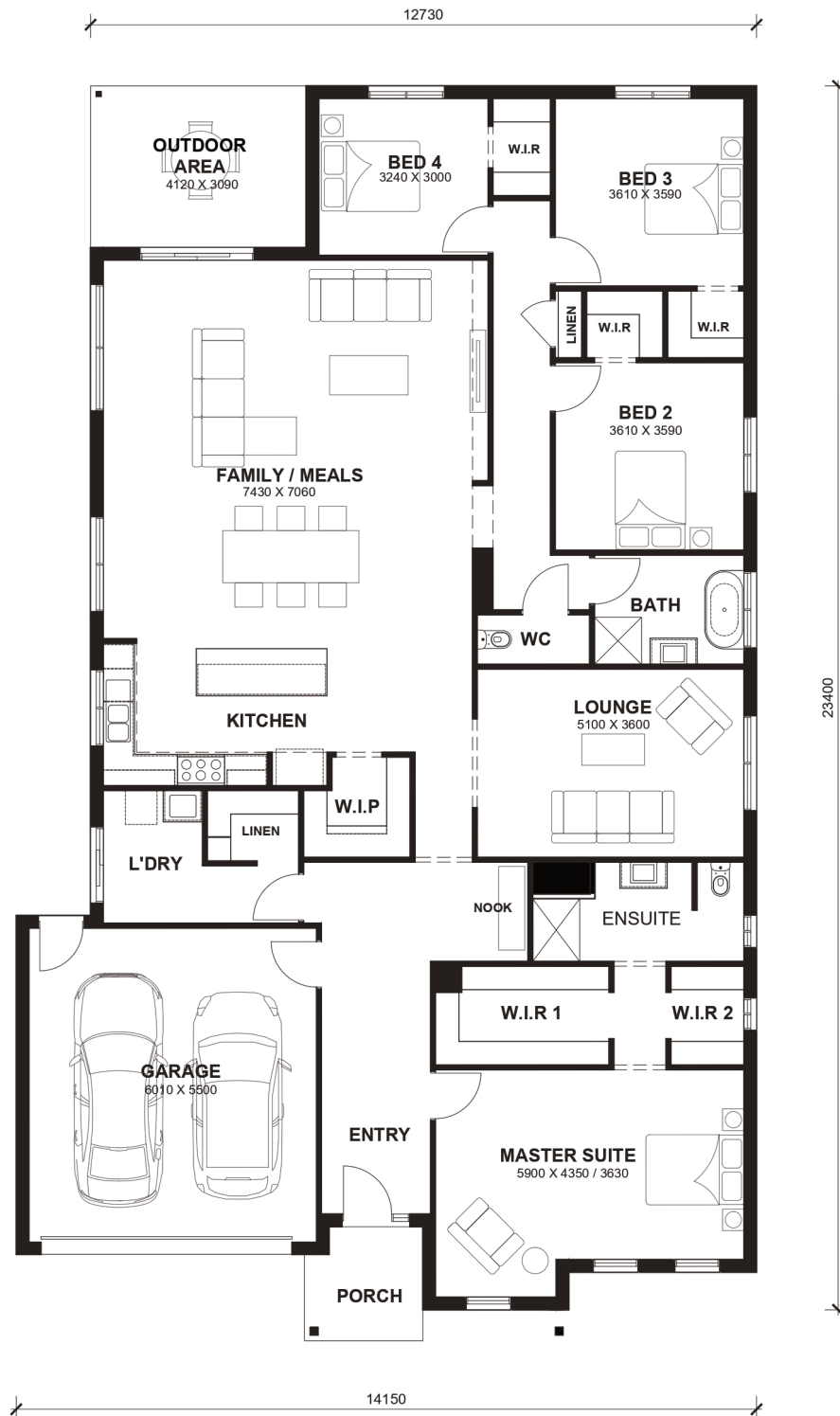


2



2

LOT WIDTH 16m⁺ LOT DEPTH 32m⁺



TOTAL AREAS

FAMILY / MEALS	7430mm x 7060mm	BED 4	3240mm x 3000mm	TOTAL	303.14m ²	32.63sq
MASTER SUITE	5900mm x 4350mm / 3630mm	LOUNGE	5100mm x 3600mm			
BED 2	3610mm x 3590mm	OUTDOOR AREA	4120mm x 3090mm	EXTERIOR LENGTH		23,400
BED 3	3610mm x 3590mm	GARAGE	6010mm x 5500mm	EXTERIOR WIDTH		14,150

House size on brochure is based on the Avalon facade. Size may vary dependant on facade. Please refer to working drawings for complete dimensions.