



FOR ILLUSTRATION PURPOSES ONLY

Westport 15

Luxembourg Facade



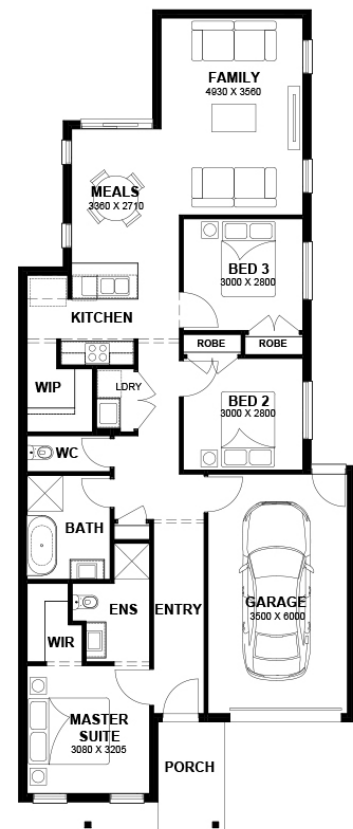
\$703,150

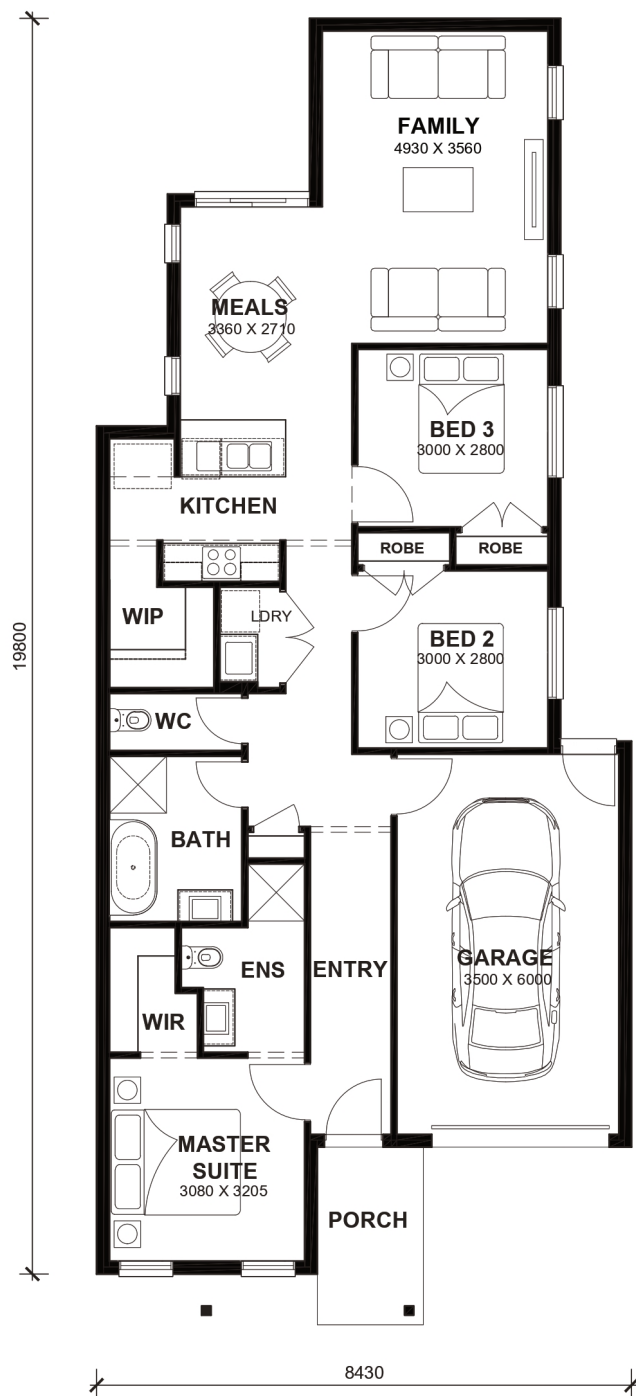
Lot 208 Opulence Ave
Fraser Rise (Prosperity Estate)

Lot Size:	350m ²	House Size:	14.77sq
Lot Price:	\$450,000	House Price:	\$253,150

PACKAGE INCLUSIONS :

- Tiles/Laminate flooring in living areas
- Led Downlights throughout the House
- 20mm Stone Benchtops Throughout.
- Developer Guidelines & Covenants Included.
- Site Costs Included (Subject to T&C's).
- Soft Closing Drawers & Doors To All Cabinets.
- Ducted Heating & Cooling System: split system air-conditioner
- All standard design homes include a 7-star energy rating, featuring solar panels, a heat pump, R5 insulation batts in the ceiling, R2.5 insulation in external walls, and double-glazed windows throughout the house."
- Call now on 0400 649 468 before the land sells out. Only 20 blocks remaining.
- Only 10 minutes from the train station and Watergardens Shopping Centre. Located near amazing schools — a great pocket for investors or first-home buyers.





TOTAL AREAS

FAMILY	4930mm x 3560mm	BED 3	3000mm x 2800mm	TOTAL	13718m ²	14.77sq
MEALS	3360mm x 2710mm	GARAGE	3500mm x 6000mm			
MASTER SUITE	3080mm x 3205mm			EXTERIOR LENGTH	19,800	
BED 2	3000mm x 2800mm			EXTERIOR WIDTH	8,430	

House size on brochure is based on the Avalon 8.5m facade. Size may vary dependant on facade. Please refer to working drawings for complete dimensions.