



FOR ILLUSTRATION PURPOSES ONLY

## Lennox 25

Luxembourg Facade



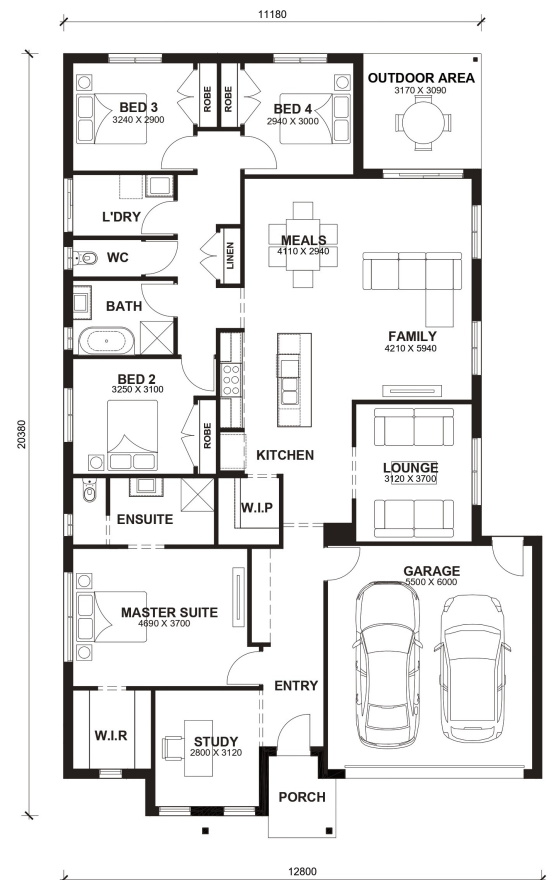
# \$792,516

Lot 165 Prosperity Estate  
Fraser Rise (Prosperity Estate)

<b>Lot Size:</b>	420m <sup>2</sup>	<b>House Size:</b>	25.23sq
<b>Lot Price:</b>	\$470,000	<b>House Price:</b>	\$322,516

### PACKAGE INCLUSIONS :

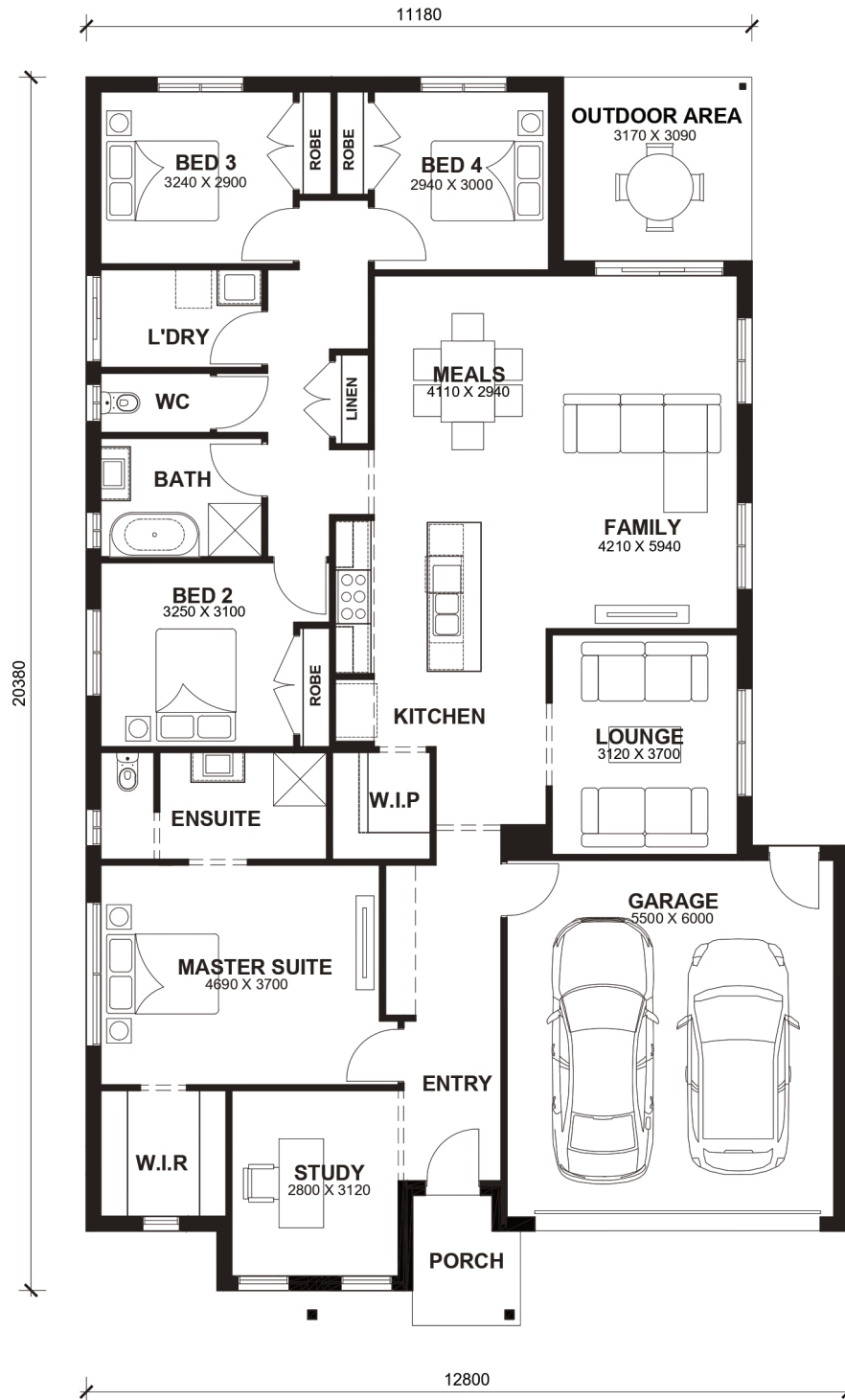
- 2.6kw Solar System
- Double Glazed Windows.
- 20mm Stone Benchtops Throughout.
- 2590mm High Ceilings Throughout.
- Flyscreens To All Openable Windows.
- LED Tri-Colour Downlights Throughout.
- Site Costs Included (Subject to T&C's).
- Soft Closing Drawers & Doors To All Cabinets.
- Blinds throughout house Excluding bathrooms
- Coloured Concrete Driveway
- 4.8 STAR RATING ON PRODUCT REVIEWS
- Reverse Cycle Split System 5.0kW Cool / 6.0kW Heat to living area



# Lennox 25



LOT WIDTH LOT DEPTH  
14m<sup>+</sup> 28m<sup>+</sup>



## TOTAL AREAS

FAMILY	4210mm x 5940mm	BED 4	2940mm x 3000mm	TOTAL	234.42m <sup>2</sup>	25.23sq
MEALS	4110mm x 2940mm	LOUNGE	3120mm x 3700mm			
MASTER SUITE	4690mm x 3700mm	STUDY	2800mm x 3120mm	EXTERIOR LENGTH		20,380
BED 2	3250mm x 3100mm	OUTDOOR AREA	3170mm x 3090mm	EXTERIOR WIDTH		12,800
BED 3	3240mm x 2900mm	GARAGE	5500mm x 6000mm			

House size on brochure is based on the Avalon facade. Size may vary dependant on facade. Please refer to working drawings for complete dimensions.