



FOR ILLUSTRATION PURPOSES ONLY

Aspen 22.5

Brooklyn Urban
Facade



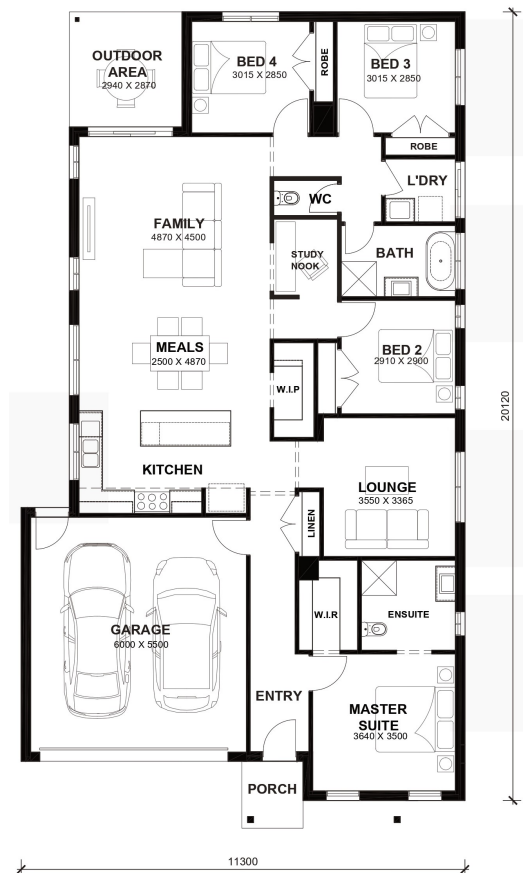
\$721,350

Lot 4525 Stature Cir
Werribee (Riverwalk Estate)

Lot Size:	375m ²	House Size:	22.51sq
Lot Price:	\$386,000	House Price:	\$335,350

PACKAGE INCLUSIONS :

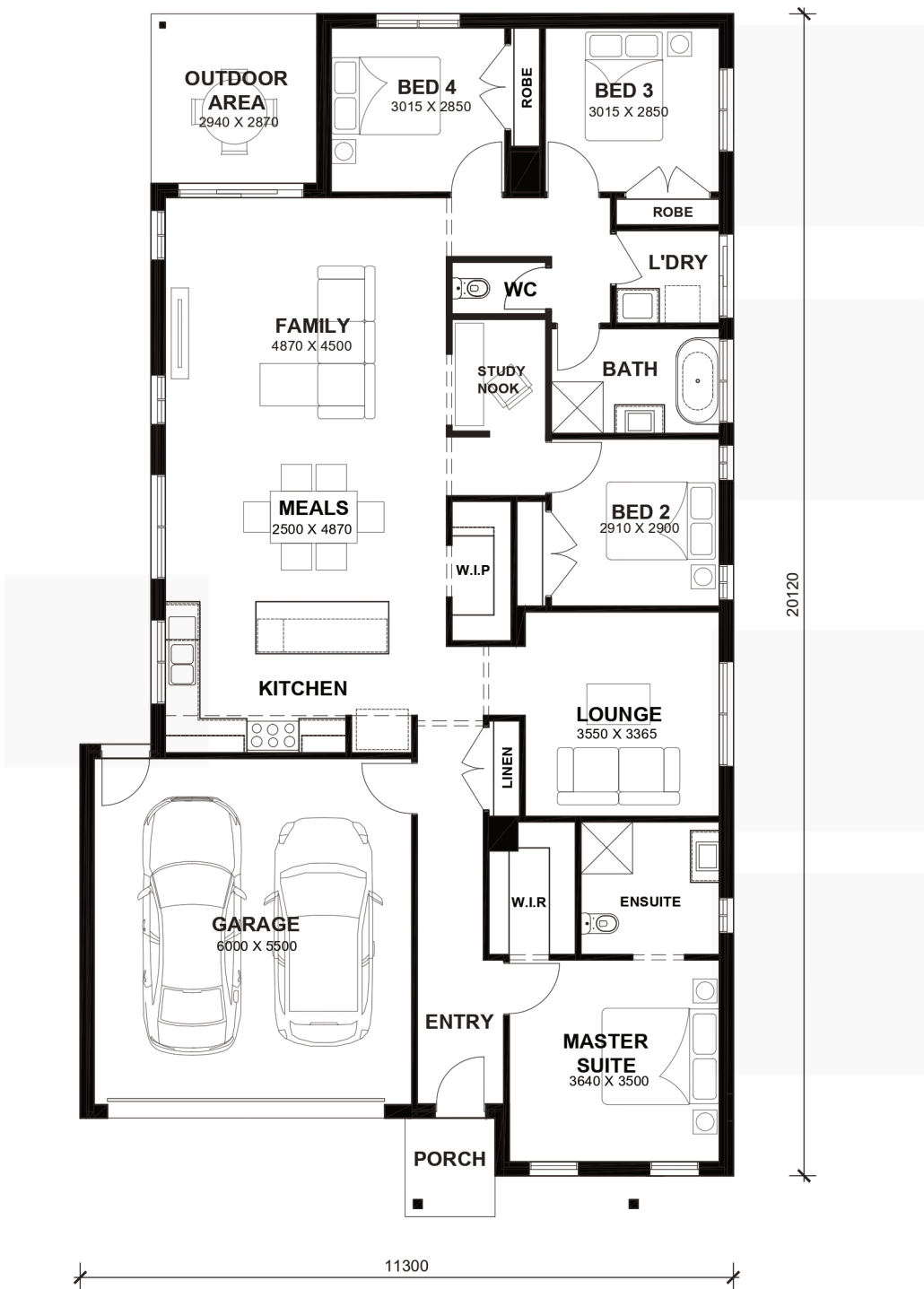
- Double Glazed Windows.
- LED Tri-Colour Downlights Throughout.
- Site Costs Included (Subject to T&C's).
- Soft Closing Drawers & Doors To All Cabinets.
- Front and Rear Landscaping
- Blinds throughout house Excluding bathrooms
- 2700 Ceiling + 2340 internal High Doors
- Double basin to Ensuite with 1200x900 shower base
- Colored Driveway including path to house
- Floor to ceiling tiles to Bath and Ensuite including Niches to showers
- 40mm stone to kitchen & 20mm stone to bathrooms
- All standard design homes include a 7-star energy rating, featuring solar panels, a heat pump, R5 insulation batts in the ceiling, R2.5 insulation in external walls, and double-glazed windows throughout the house."



Aspen 22.5



LOT WIDTH LOT DEPTH
12.5m⁺ 28m⁺



TOTAL AREAS

FAMILY	4870mm x 4500mm	BED 4	3015mm x 2850mm	TOTAL	209.14m ²	22.51sq
MEALS	2500mm x 4870mm	LOUNGE	3550mm x 3365mm			
MASTER SUITE	3640mm x 3500mm	OUTDOOR AREA	2940mm x 2870mm	EXTERIOR LENGTH		20,120
BED 2	2910mm x 2900mm	GARAGE	6000mm x 5500mm	EXTERIOR WIDTH		11,300
BED 3	3015mm x 2850mm					

House size on brochure is based on the Avalon facade. Size may vary dependant on facade. Please refer to working drawings for complete dimensions.