



FOR ILLUSTRATION PURPOSES ONLY

## Bayview 27

Royale Facade



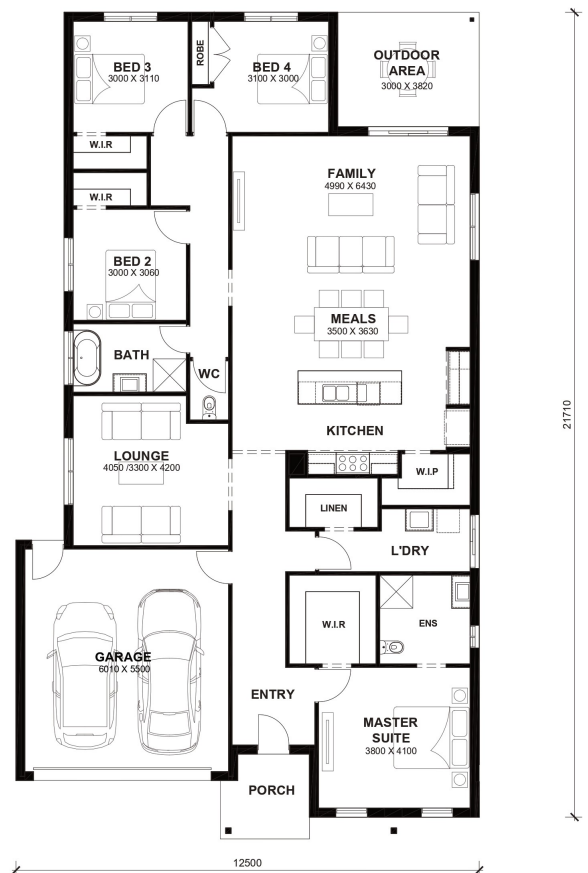
# \$991,000

Lot 432 Bowerbird Way  
**Wallan (Wallan Valley Estate)**

<b>Lot Size:</b>	420m <sup>2</sup>	<b>House Size:</b>	26.94sq
<b>Lot Price:</b>	\$342,000	<b>House Price:</b>	\$649,000

### PACKAGE INCLUSIONS :

- Double Glazed Windows.
- 20mm Stone Benchtops Throughout.
- 22.5 Degree Roof Pitch.
- 2590mm High Ceilings Throughout.
- LED Tri-Colour Downlights Throughout.
- Glazed Porcelain Tiles To All Wet Areas (Including Showerbase).
- Soft Closing Drawers & Doors To All Cabinets.
- Tile Splashback To Kitchen.
- Heating & Cooling
- AMAZING 4.8 STARS ON PRODUCT REVIEW



# Bayview 27



LOT WIDTH LOT DEPTH  
14m<sup>+</sup> 30m<sup>+</sup>



## TOTAL AREAS

FAMILY	4990mm x 6430mm	BED 4	3100mm x 3000mm	TOTAL	250.31m <sup>2</sup>	26.94sq
MEALS	3500mm x 3630mm	LOUNGE	4050 / 3300mm x 4200mm			
MASTER SUITE	3800mm x 4010mm	OUTDOOR AREA	3000mm x 3820mm	EXTERIOR LENGTH		21,710
BED 2	3000mm x 3060mm	GARAGE	6010mm x 5500mm	EXTERIOR WIDTH		12,500
BED 3	3000mm x 3110mm					

House size on brochure is based on the Avalon facade. Size may vary dependant on facade. Please refer to working drawings for complete dimensions.