



Ventura 13

Avalon 8.5 Facade



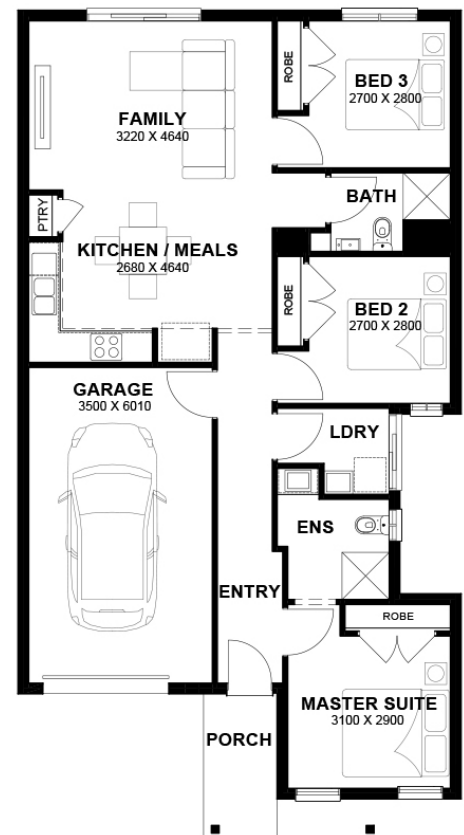
\$534,950

Lot 555 Holmfirth Way
Lara (Austin Estate)

Lot Size:	262.50m ²	House Size:	12.71sq
Lot Price:	\$293,800	House Price:	\$241,150

PACKAGE INCLUSIONS :

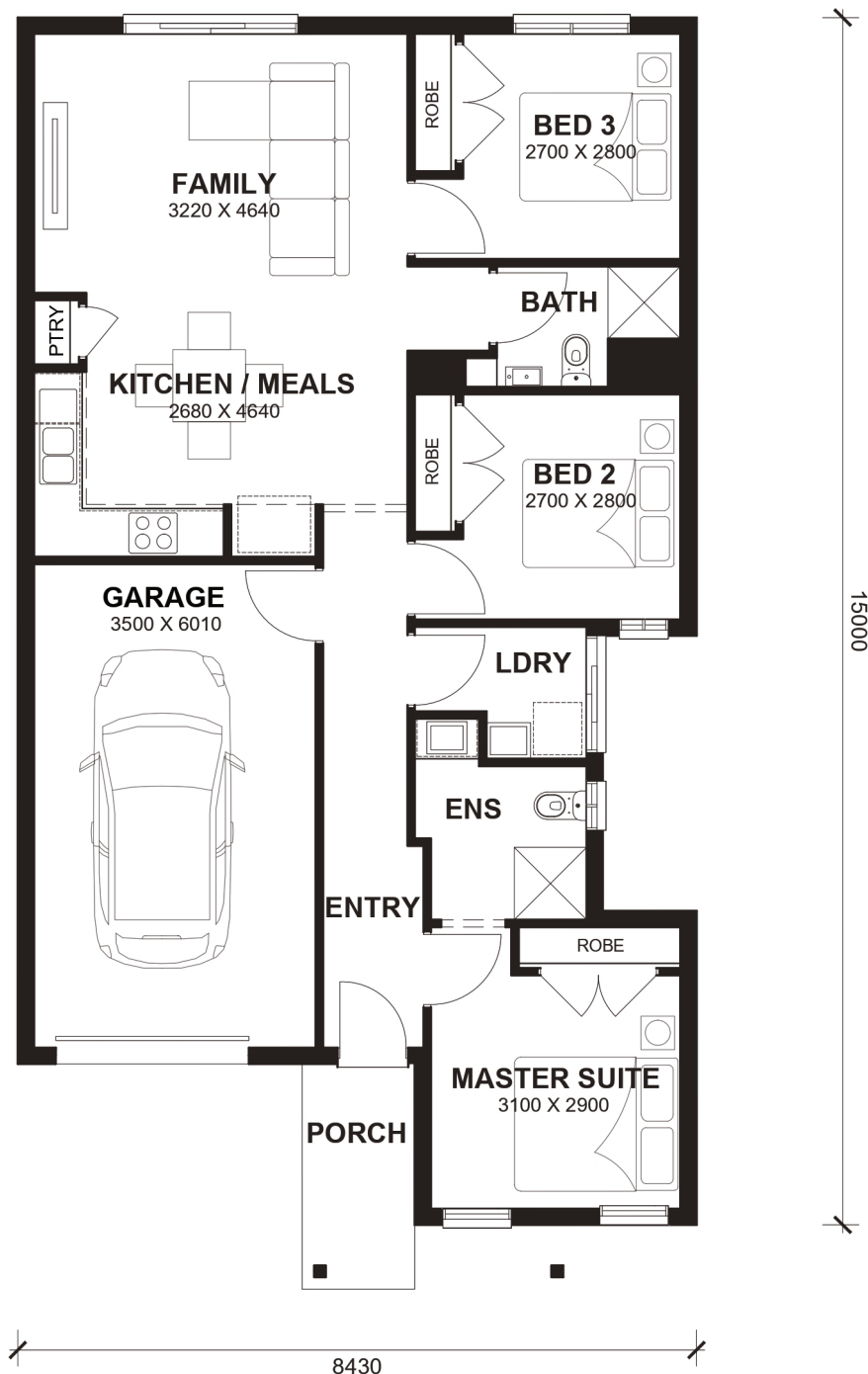
- Led Downlights throughout the House
- Double Glazed Windows.
- Feature Cabinetry To Kitchen and Bathrooms.
- Glazed Porcelain Tiles To All Wet Areas (Including Showerbase).
- Site Costs Included (Subject to T&C's).
- Soft Closing Drawers & Doors To All Cabinets.
- Tile Splashback To Kitchen.
- Coloured Concrete Driveway
- Ducted Heating & Cooling System: split system air-conditioner
- THE MEGA SALE PROMOTION - \$15K OFF Applied
- Dishwasher
- Laminated Timber Flooring to Living Areas & Carpets to Bedrooms
- TITLED LAND, READY TO BUILD ON!



Ventura 13



LOT WIDTH 8.5m⁺ LOT DEPTH 21m⁺



TOTAL AREAS

FAMILY	3220mm x 4640mm	BED 3	2700mm x 2800mm	TOTAL	118.12m ²	12.71sq
KITCHEN / MEALS	2680mm x 4640mm	GARAGE	3500mm x 6010mm			
MASTER SUITE	3100mm x 2900mm			EXTERIOR LENGTH	15,000	
BED 2	2700mm x 2800mm			EXTERIOR WIDTH	8,430	

House size on brochure is based on the Avalon 8.5m facade. Size may vary dependant on facade. Please refer to working drawings for complete dimensions.