



FOR ILLUSTRATION PURPOSES ONLY

Aria 25

Sorrento Facade



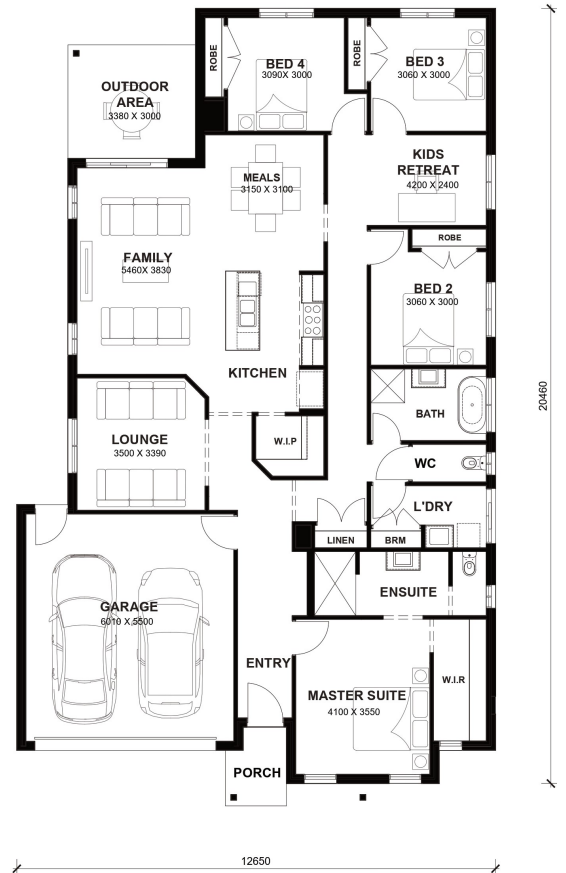
\$690,750

Lot 516 Austral Street
Beveridge (Timbarra Estate)

Lot Size:	448m ²	House Size:	25.19sq
Lot Price:	\$365,000	House Price:	\$325,750

PACKAGE INCLUSIONS :

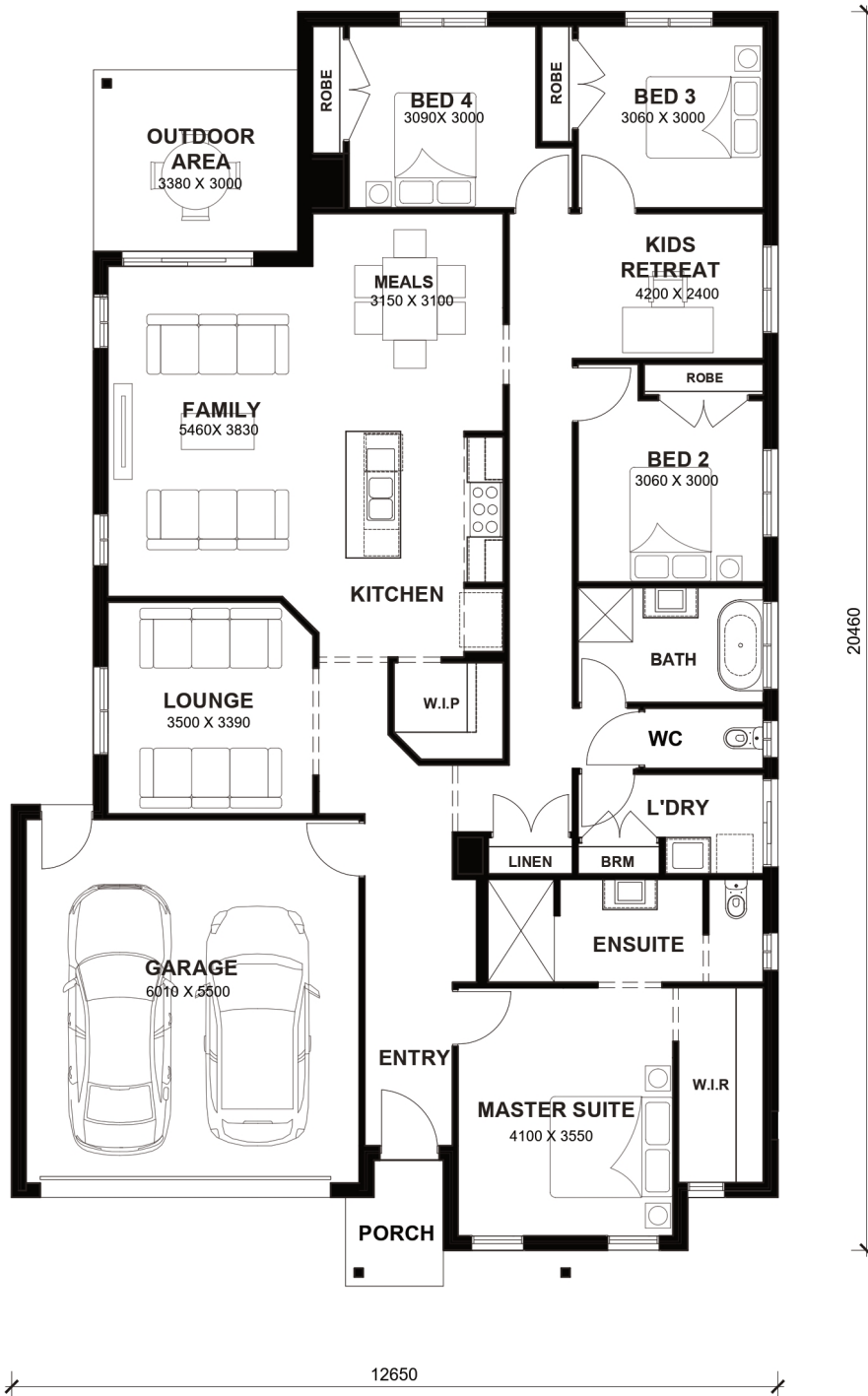
- 2.6kw Solar System
- Double Glazed Windows.
- 20mm Stone Benchtops Throughout.
- 2590mm High Ceilings Throughout.
- LED Tri-Colour Downlights Throughout.
- Glazed Porcelain Tiles To All Wet Areas (Including Showerbase).
- Soft Closing Drawers & Doors To All Cabinets.
- 900mm stainless steel appliances & 600mm Dishwasher (Design Specific).
- Front and Rear Landscaping
- Blinds throughout house Excluding bathrooms
- Heating & Cooling



Aria 25



LOT WIDTH 14m+ LOT DEPTH 28m+



TOTAL AREAS

FAMILY	5460mm x 3830mm	BED 3	3060mm x 3000mm	TOTAL	234.01m ²	25.19sq
MEALS	3150mm x 3100mm	BED 4	3090mm x 3000mm			
LOUNGE	3500mm x 3390mm	KIDS RETREAT	4200mm x 2400mm	EXTERIOR LENGTH		20,460
MASTER SUITE	4100mm x 3550mm	OUTDOOR AREA	3380mm x 3000mm	EXTERIOR WIDTH		12,650
BED 2	3060mm x 3000mm	GARAGE	6010mm x 5500mm			

House size on brochure is based on the Avalon facade. Size may vary dependant on facade. Please refer to working drawings for complete dimensions.