



FOR ILLUSTRATION PURPOSES ONLY

## Kimberley 18

Monsanto Facade



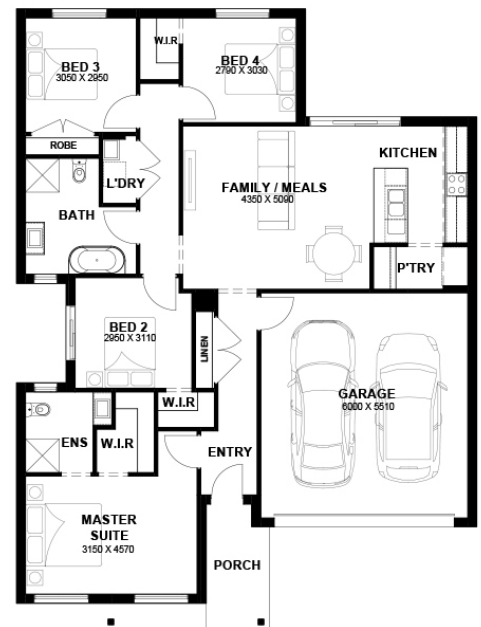
# \$611,250

Lot 903 Vancleve Street  
Tarnait (Bluestone Estate)

<b>Lot Size:</b> 262.50m <sup>2</sup>	<b>House Size:</b> 18.22sq
<b>Lot Price:</b> \$338,000	<b>House Price:</b> \$273,250

### PACKAGE INCLUSIONS :

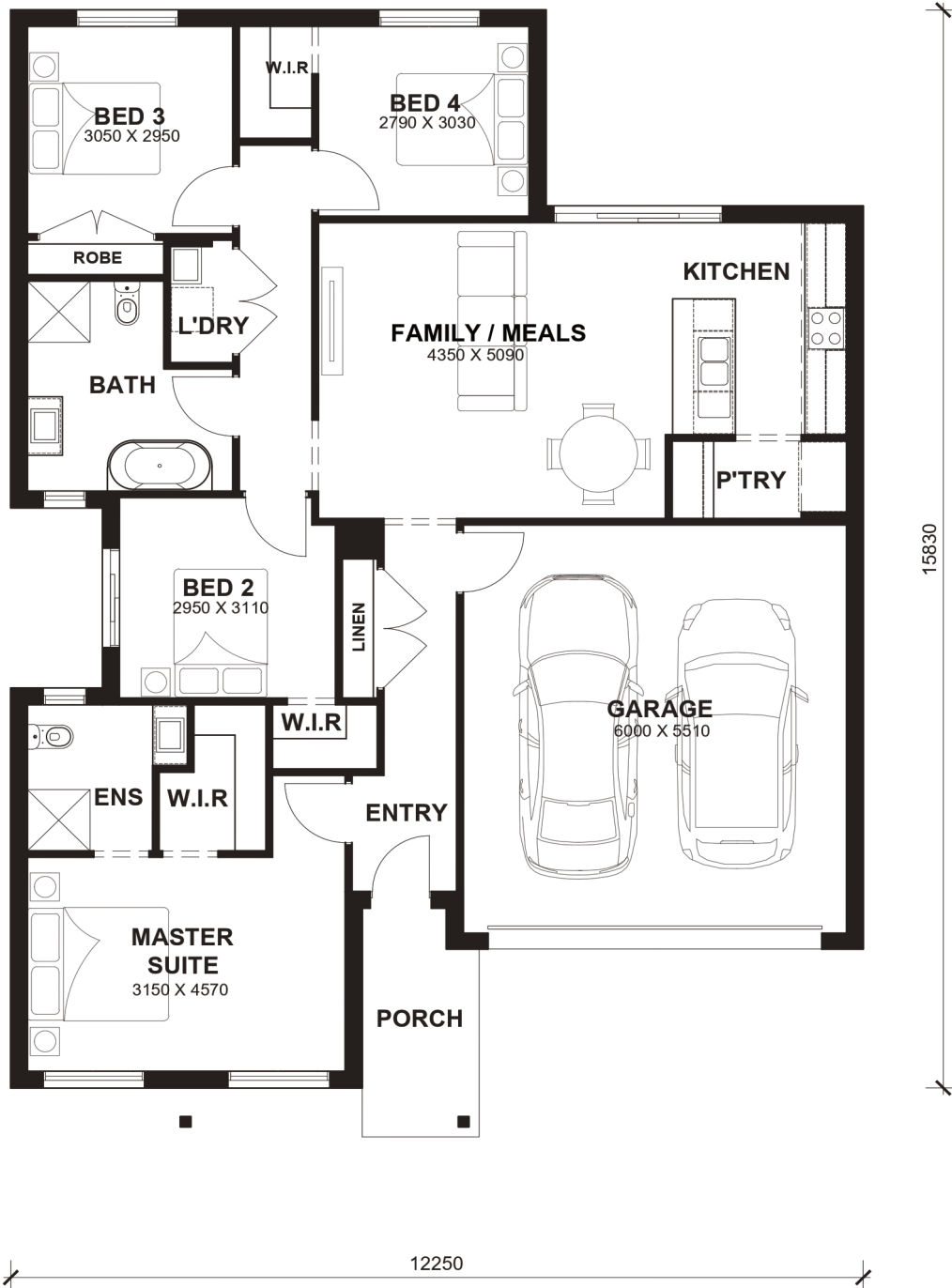
- Double Glazed Windows.
- 2740mm High Ceilings Throughout.
- Evaporative Cooling.
- LED Tri-Colour Downlights Throughout.
- Site Costs Included (Subject to T&C's).
- Soft Closing Drawers & Doors To All Cabinets.
- Double basin to Ensuite with 1200x900 shower base
- 40mm stone to kitchen & 20mm stone to bathrooms
- All standard design homes include a 7-star energy rating, featuring solar panels, a heat pump, R5 insulation batts in the ceiling, R2.5 insulation in external walls, and double-glazed windows throughout the house."
- Full Turn Key Package : Front & Rear Landscaping, Driveway, Blinds, Clothesline, Flyscreens , TV Antenna, and Mailbox



# Kimberly 18



LOT WIDTH 12.5m+  
LOT DEPTH 21m+



## TOTAL AREAS

FAMILY / MEALS	4350mm x 5090mm	BED 4	2790mm x 3030mm	TOTAL	169.22m <sup>2</sup>	18.22sq
MASTER SUITE	3150mm x 4570mm	GARAGE	6000mm x 5510mm			
BED 2	2950mm x 3110mm			EXTERIOR LENGTH		15,830
BED 3	3050mm x 2950mm			EXTERIOR WIDTH		12,250

House size on brochure is based on the Avalon facade. Size may vary dependant on facade. Please refer to working drawings for complete dimensions.