



FOR ILLUSTRATION PURPOSES ONLY

## Cassini 19

Hamilton Gable  
Facade



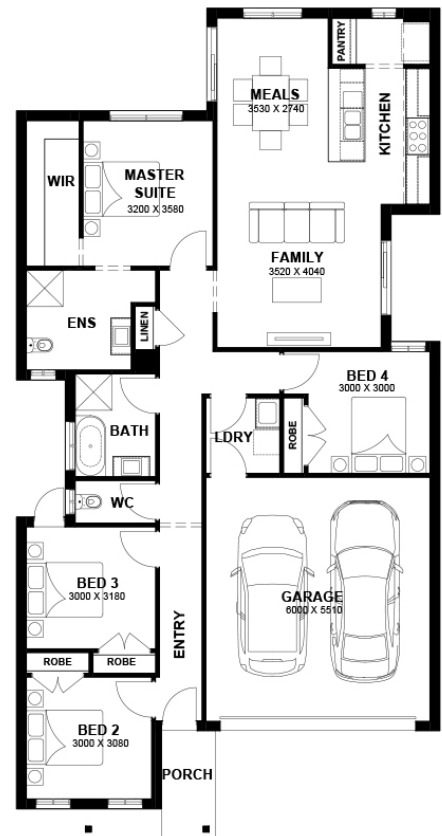
# \$650,150

Lot 2506 Hanish Street  
Truganina (Grandview Estate)

<b>Lot Size:</b> 357.50m <sup>2</sup>	<b>House Size:</b> 19.03sq
<b>Lot Price:</b> \$379,000	<b>House Price:</b> \$271,150

### PACKAGE INCLUSIONS :

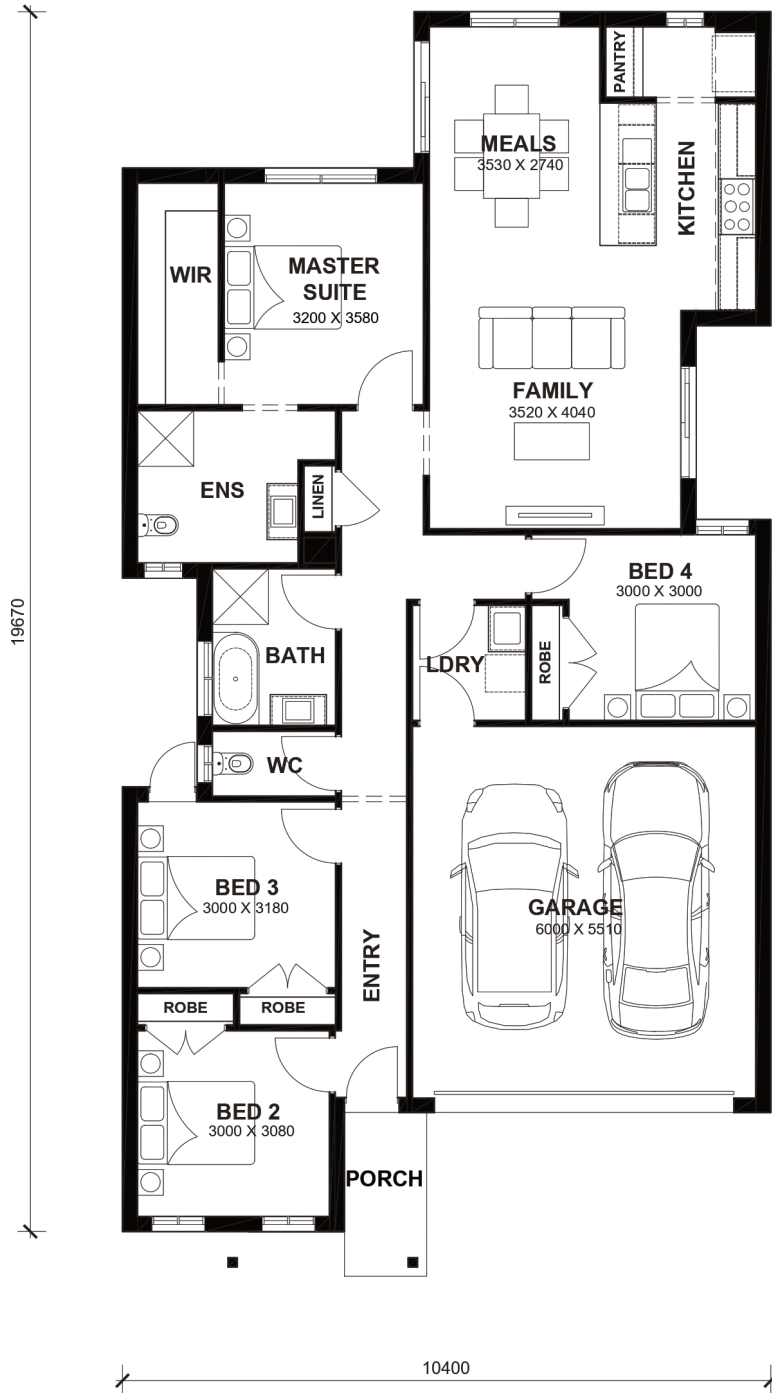
- Led Downlights throughout the House
- Double Glazed Windows.
- Feature Cabinetry To Kitchen and Bathrooms.
- Glazed Porcelain Tiles To All Wet Areas (Including Showerbase).
- Site Costs Included (Subject to T&C's).
- Soft Closing Drawers & Doors To All Cabinets.
- Tile Splashback To Kitchen.
- Coloured Concrete Driveway
- Ducted Heating & Cooling System: split system air-conditioner
- THE MEGA SALE PROMOTION - \$15K OFF Applied
- Dishwasher
- \$25K Land Rebate Applied
- Laminated Timber Flooring to Living Areas & Carpets to Bedrooms
- TITLED LAND, READY TO BUILD ON!



# Cassini 19



LOT WIDTH 10.5m<sup>+</sup> LOT DEPTH 25m<sup>+</sup>



## TOTAL AREAS

FAMILY	3520mm x 4040mm	BED 3	3000mm x 3180mm	TOTAL	176.78m <sup>2</sup>	19.03sq
MEALS	3530mm x 2740mm	BED 4	3000mm x 3000mm			
MASTER SUITE	3200mm x 3580mm	GARAGE	6000mm x 5510mm	EXTERIOR LENGTH		19,670
BED 2	3000mm x 3080mm			EXTERIOR WIDTH		10,400

House size on brochure is based on the Avalon facade. Size may vary dependant on facade. Please refer to working drawings for complete dimensions.