



FOR ILLUSTRATION PURPOSES ONLY

## ASPEN 22.5

Hamilton Gable  
Facade



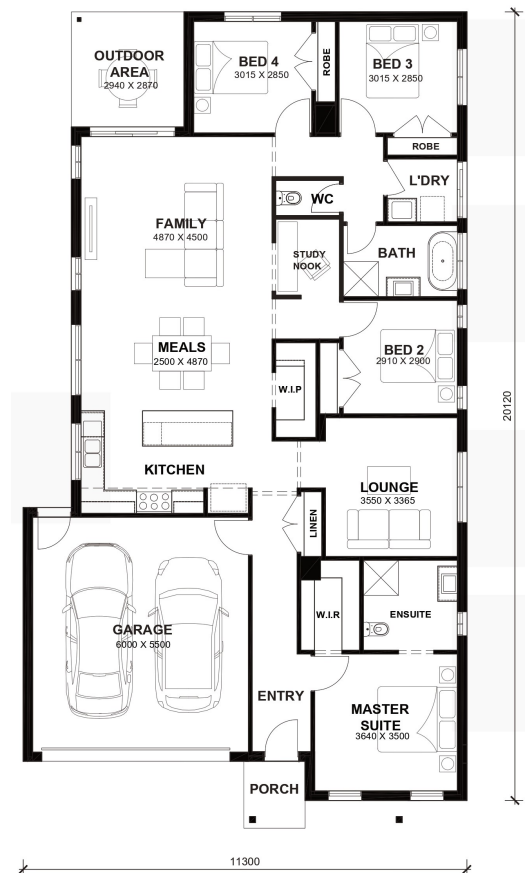
**\$697,450**

Lot 1629 Verdant Hill  
Tarneit (Verdant Hill Estate)

<b>Lot Size:</b>	377.75m <sup>2</sup>	<b>House Size:</b>	22.51sq
<b>Lot Price:</b>	\$404,500	<b>House Price:</b>	\$292,950

### PACKAGE INCLUSIONS :

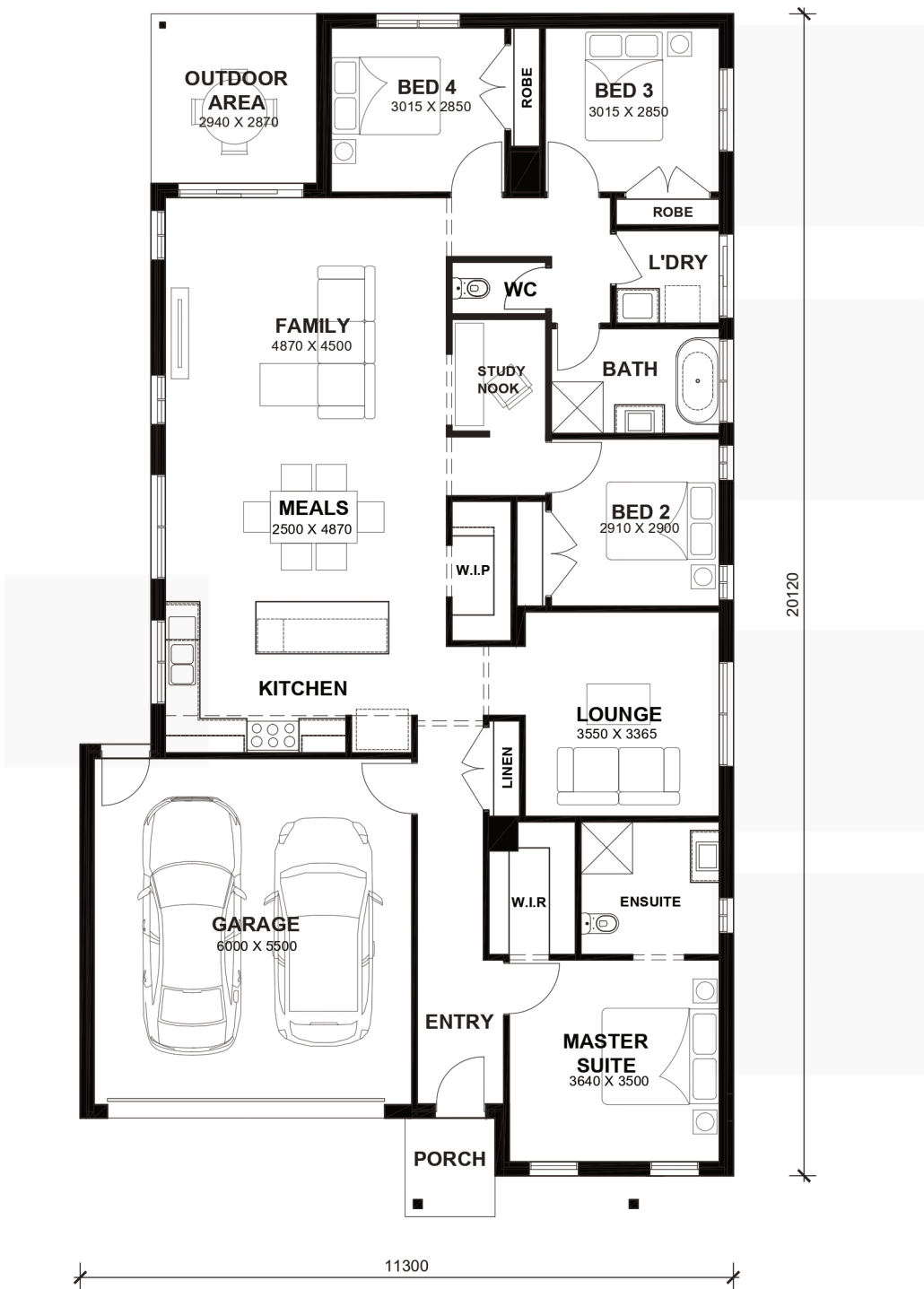
- Double Glazed Windows.
- 20mm Stone Benchtops Throughout.
- 2590mm High Ceilings Throughout.
- Ducted Heating.
- LED Tri-Colour Downlights Throughout.
- Soft Closing Drawers & Doors To All Cabinets.
- 900mm stainless steel appliances & 600mm Dishwasher (Design Specific).
- 215L Heat Pump Hot water Service.
- Back to Wall freestanding bath tub (size specific).
- Driveway, Letterbox & Antenna
- Flexible floor plans & so much more!



# Aspen 22.5



LOT WIDTH LOT DEPTH  
12.5m<sup>+</sup> 28m<sup>+</sup>



## TOTAL AREAS

FAMILY	4870mm x 4500mm	BED 4	3015mm x 2850mm	TOTAL	209.14m <sup>2</sup>	22.51sq
MEALS	2500mm x 4870mm	LOUNGE	3550mm x 3365mm			
MASTER SUITE	3640mm x 3500mm	OUTDOOR AREA	2940mm x 2870mm	EXTERIOR LENGTH		20,120
BED 2	2910mm x 2900mm	GARAGE	6000mm x 5500mm	EXTERIOR WIDTH		11,300
BED 3	3015mm x 2850mm					

House size on brochure is based on the Avalon facade. Size may vary dependant on facade. Please refer to working drawings for complete dimensions.