



FOR ILLUSTRATION PURPOSES ONLY

## Cassini 20

Stanley Facade



# \$682,750

Lot 1625 Verdant Hill  
Tarneit (Verdant Hill Estate)

<b>Lot Size:</b>	388.13m <sup>2</sup>	<b>House Size:</b>	20.01sq
<b>Lot Price:</b>	\$410,000	<b>House Price:</b>	\$272,750

### PACKAGE INCLUSIONS :

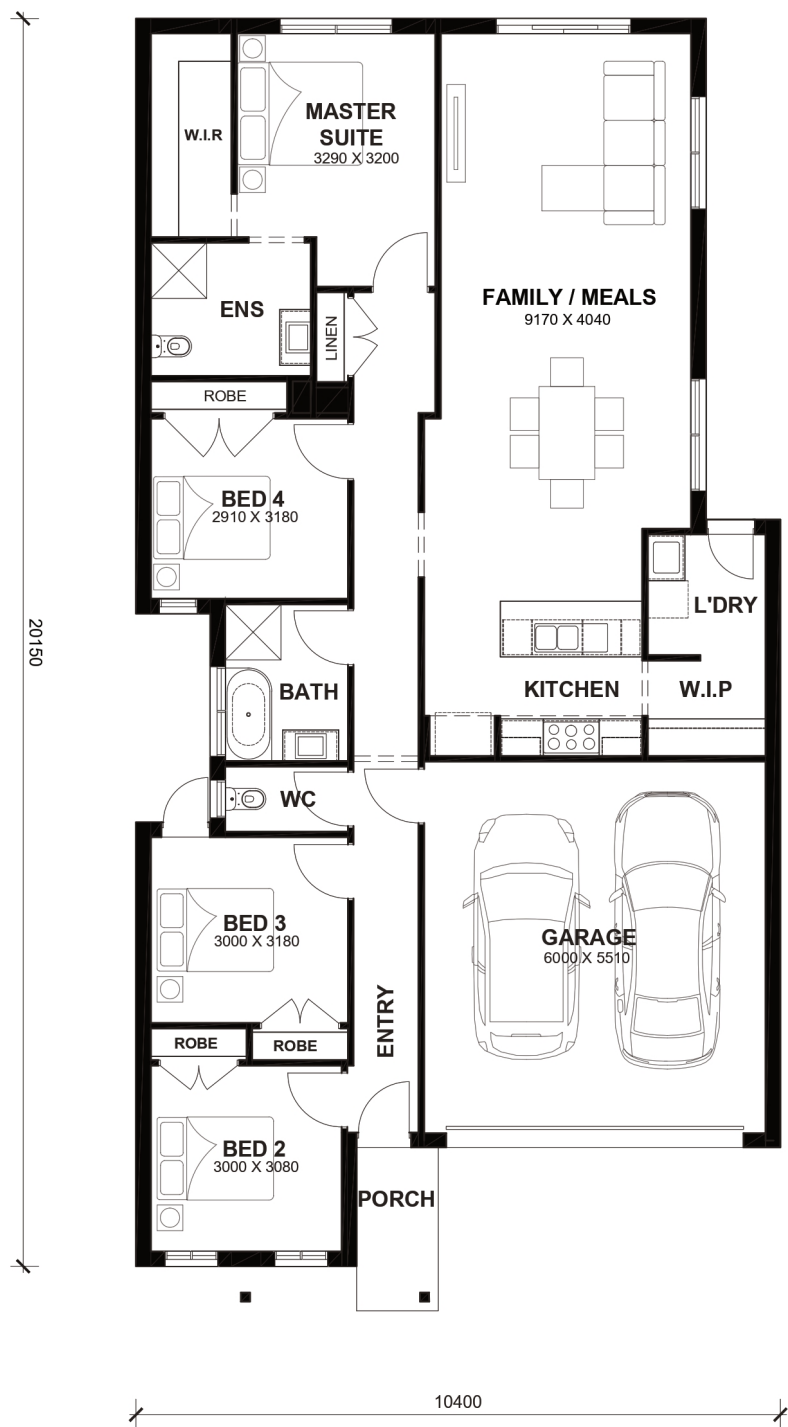
- Double Glazed Windows.
- 20mm Stone Benchtops Throughout.
- 2590mm High Ceilings Throughout.
- Ducted Heating.
- LED Tri-Colour Downlights Throughout.
- Soft Closing Drawers & Doors To All Cabinets.
- 900mm stainless steel appliances & 600mm Dishwasher (Design Specific).
- 215L Heat Pump Hot water Service.
- Back to Wall freestanding bath tub (size specific).
- Driveway, Letterbox & Antenna
- Flexible floor plans & so much more!



# Cassini 20



LOT WIDTH LOT DEPTH  
10.5m+ 28m+



## TOTAL AREAS

FAMILY	9170mm x 4040mm	BED 4	2910mm x 3180mm	TOTAL	185.94m <sup>2</sup>	20.01sq
MASTER SUITE	3290mm x 3200mm	GARAGE	6000mm x 5510mm			
BED 2	3000mm x 3080mm			EXTERIOR LENGTH		20,150
BED 3	3000mm x 3180mm			EXTERIOR WIDTH		10,400

House size on brochure is based on the Avalon facade. Size may vary dependant on facade. Please refer to working drawings for complete dimensions.