



FOR ILLUSTRATION PURPOSES ONLY

EDEN 15.5

Hamilton Natural
Facade



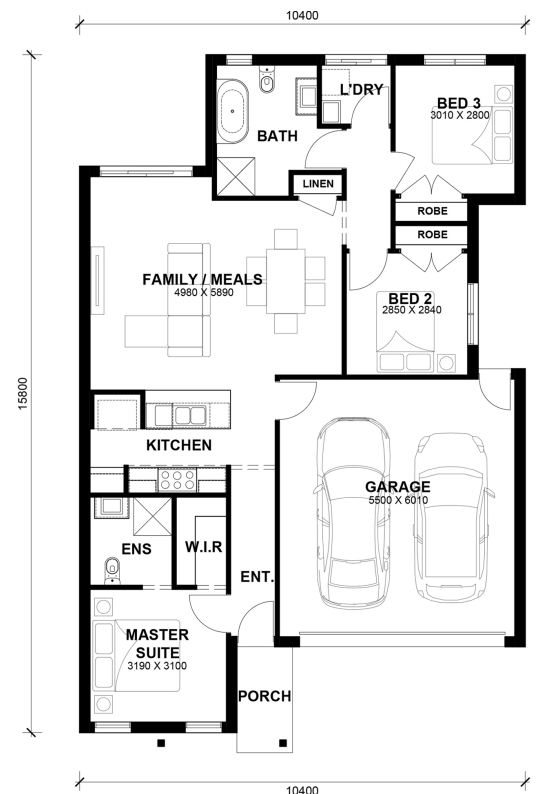
\$591,250

Lot 1616 Commonwealth Circuit
Donnybrook (Olivine Estate)

Lot Size:	262.50m ²	House Size:	15.50sq
Lot Price:	\$337,000	House Price:	\$254,250

PACKAGE INCLUSIONS :

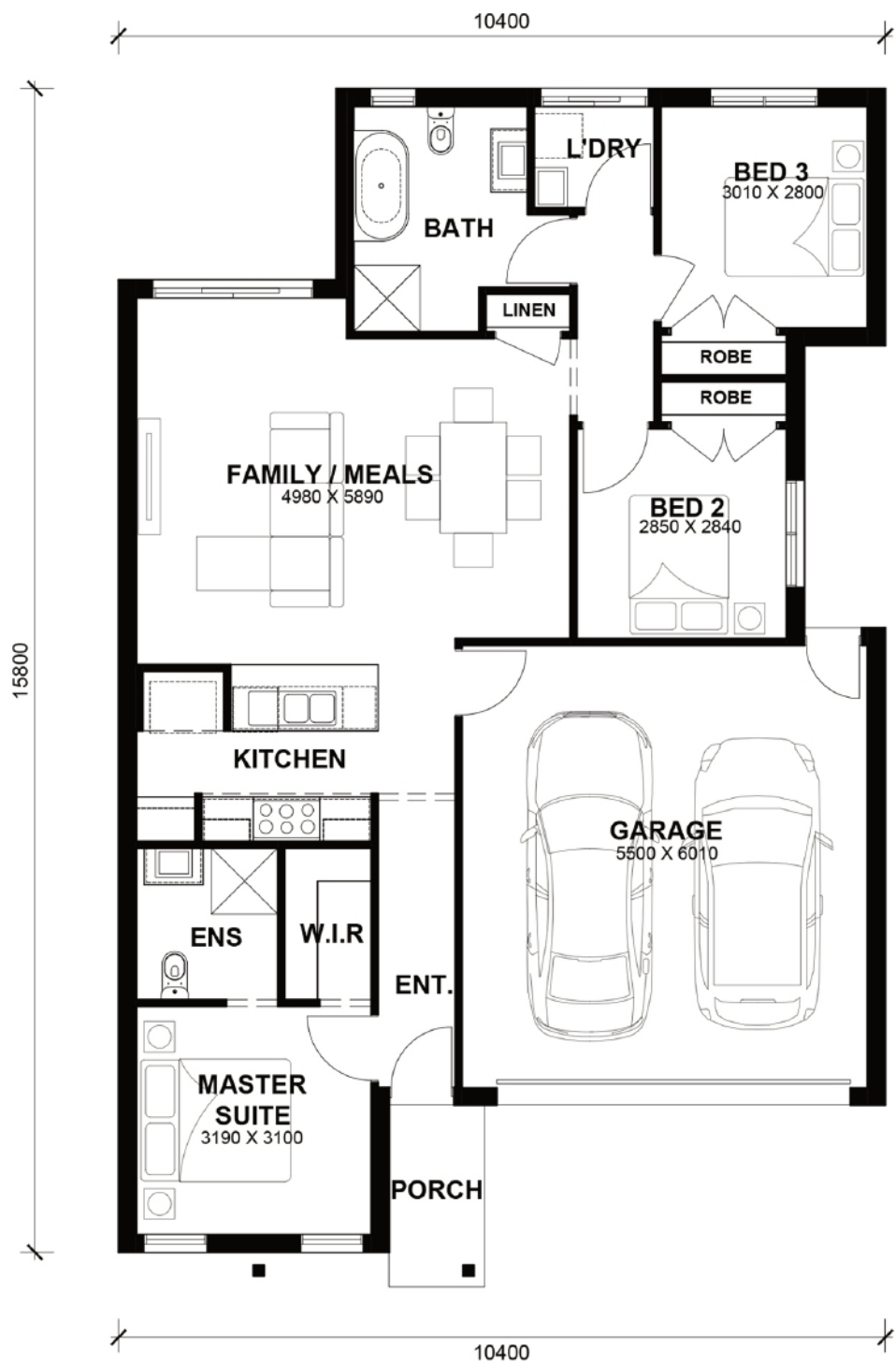
- Tiles/Laminate flooring in living areas
- Led Downlights throughout the House
- 2.6kw Solar System
- Double Glazed Windows.
- 20mm Stone Benchtops Throughout.
- Feature Cabinetry To Kitchen and Bathrooms.
- Glazed Porcelain Tiles To All Wet Areas (Including Showerbase).
- Site Costs Included (Subject to T&C's).
- Soft Closing Drawers & Doors To All Cabinets.
- Tile Splashback To Kitchen.
- 900mm Appliances to Kitchen
- Coloured Concrete Driveway
- Ducted Heating & Cooling System: split system air-conditioner
- THE MEGA SALE PROMOTION - \$15K OFF Applied
- Dishwasher



Eden 15.5



LOT WIDTH LOT DEPTH
10.5m⁺ 21m⁺



TOTAL AREAS

FAMILY / MEALS	4980mm x 5980mm	GARAGE	5500mm x 6010mm	TOTAL	143.12m ²	15.4lsq
MASTER SUITE	3190mm x 3100mm					
BED 2	2850mm x 2840mm			EXTERIOR LENGTH		15,800
BED 3	3010mm x 2800mm			EXTERIOR WIDTH		10,400

House size on brochure is based on the Avalon facade. Size may vary dependant on facade. Please refer to working drawings for complete dimensions.