



FOR ILLUSTRATION PURPOSES ONLY

## Kimberley 18

Avalon Facade



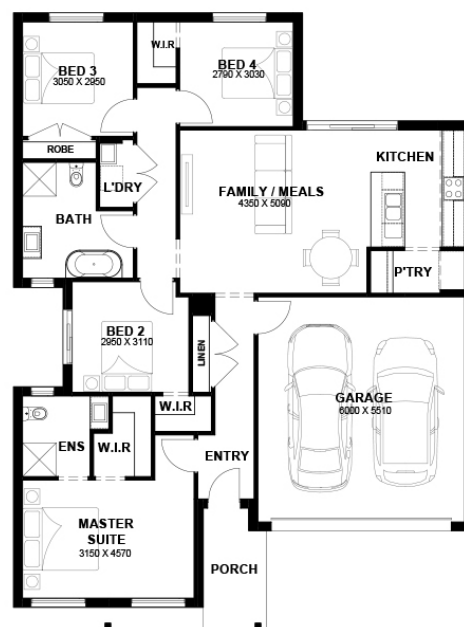
# \$589,107

Lot 511 Milkmaids Avenue  
Deanside (Little Springs Estate)

<b>Lot Size:</b>	262.50m <sup>2</sup>	<b>House Size:</b>	18.22sq
<b>Lot Price:</b>	\$330,000	<b>House Price:</b>	\$259,107

### PACKAGE INCLUSIONS :

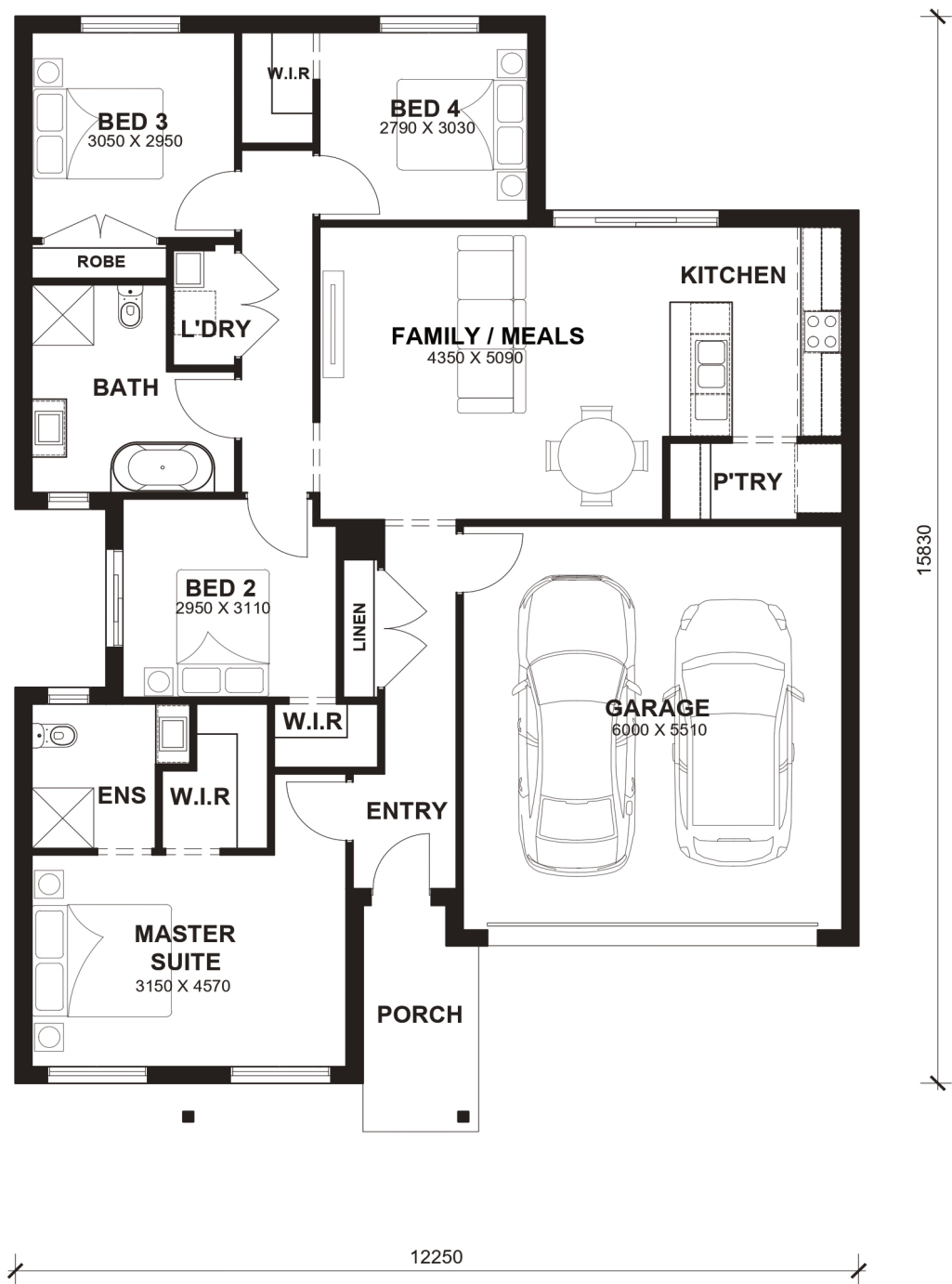
- Tiles/Laminate flooring in living areas
- Led Downlights throughout the House
- 2.6kw Solar System
- Double Glazed Windows.
- 20mm Stone Benchtops Throughout.
- Feature Cabinetry To Kitchen and Bathrooms.
- Glazed Porcelain Tiles To All Wet Areas (Including Showerbase).
- Site Costs Included (Subject to T&C's).
- Soft Closing Drawers & Doors To All Cabinets.
- Tile Splashback To Kitchen.
- 900mm Appliances to Kitchen
- Coloured Concrete Driveway
- Ducted Heating & Cooling System: split system air-conditioner
- THE MEGA SALE PROMOTION - \$15K OFF Applied
- Dishwasher



# Kimberly 18



LOT WIDTH LOT DEPTH  
12.5m+ 21m+



## TOTAL AREAS

FAMILY / MEALS	4350mm x 5090mm	BED 4	2790mm x 3030mm	TOTAL	169.22m <sup>2</sup>	18.22sq
MASTER SUITE	3150mm x 4570mm	GARAGE	6000mm x 5510mm			
BED 2	2950mm x 3110mm			EXTERIOR LENGTH		15,830
BED 3	3050mm x 2950mm			EXTERIOR WIDTH		12,250

House size on brochure is based on the Avalon facade. Size may vary dependant on facade. Please refer to working drawings for complete dimensions.