



FOR ILLUSTRATION PURPOSES ONLY

## Westport 15

Eltham 8.5 Facade



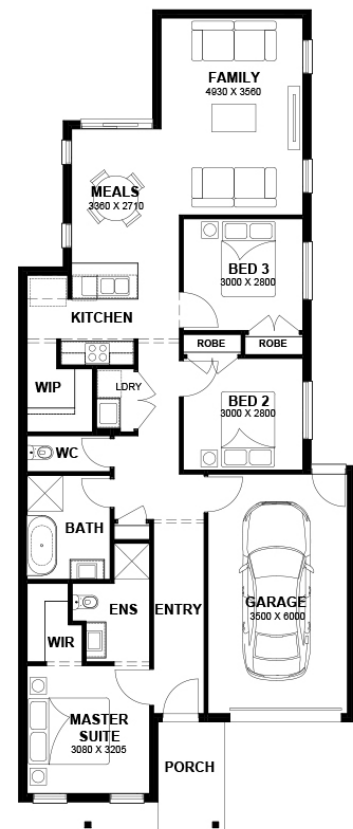
# \$544,090

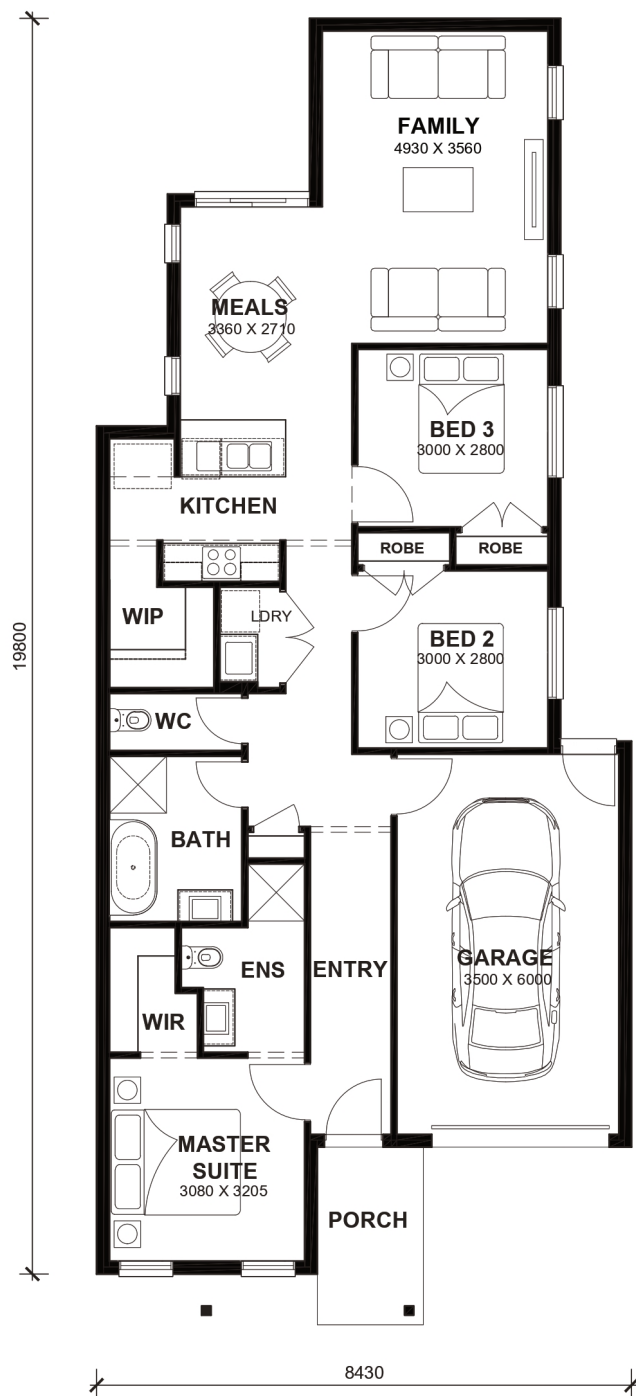
## Lot 5027 \$40K UPGRADES INCLUDED Weir Views (Exford Waters Estate)

<b>Lot Size:</b>	272m <sup>2</sup>	<b>House Size:</b>	14.77sq
<b>Lot Price:</b>	\$267,000	<b>House Price:</b>	\$277,090

### PACKAGE INCLUSIONS :

- 2.6kw Solar System
- Double Glazed Windows.
- 20mm Stone Benchtops Throughout.
- Ducted Heating.
- LED Tri-Colour Downlights Throughout.
- Site Costs Included (Subject to T&C's).
- 215L Heat Pump Hot water Service.
- Back to Wall freestanding bath tub (size specific).
- Floor to Ceiling Tiling in Ensuite & Bath
- 4.8 STAR RATING ON PRODUCT REVIEWS
- \$40,000.00 IN UPGRADES INCLUDED (YOU CHOOSE YOUR UPGRADES AT NO EXTRA CHARGE)
- Flooring throughout





TOTAL AREAS

FAMILY	4930mm x 3560mm	BED 3	3000mm x 2800mm	TOTAL	13718m <sup>2</sup>	14.77sq
MEALS	3360mm x 2710mm	GARAGE	3500mm x 6000mm			
MASTER SUITE	3080mm x 3205mm			EXTERIOR LENGTH		19,800
BED 2	3000mm x 2800mm			EXTERIOR WIDTH		8,430

House size on brochure is based on the Avalon 8.5m facade. Size may vary dependant on facade. Please refer to working drawings for complete dimensions.