



FOR ILLUSTRATION PURPOSES ONLY

## Westport 15

Avalon Facade



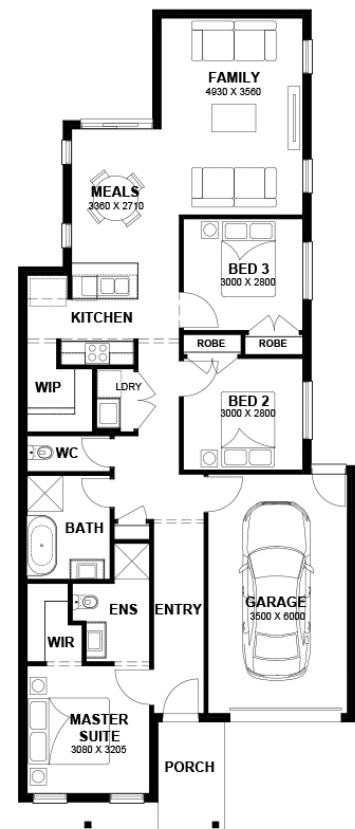
**\$509,974**

Lot 545 Wharfedale Cres  
Lara (Austin Estate)

<b>Lot Size:</b>	212.50m <sup>2</sup>	<b>House Size:</b>	14.77sq
<b>Lot Price:</b>	\$253,800	<b>House Price:</b>	\$256,174

### PACKAGE INCLUSIONS :

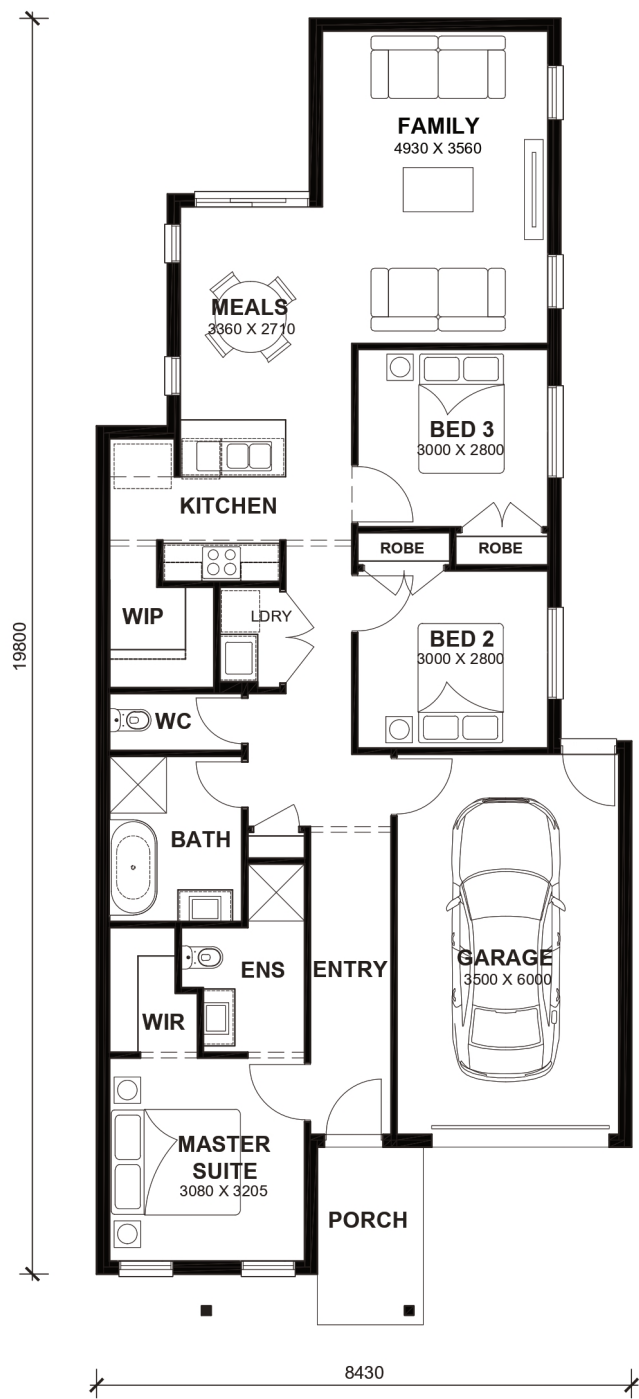
- 2.6kw Solar System
- Double Glazed Windows.
- 20mm Stone Benchtops Throughout.
- 2590mm High Ceilings Throughout.
- Ducted Heating.
- LED Tri-Colour Downlights Throughout.
- Site Costs Included (Subject to T&C's).
- 900mm stainless steel appliances & 600mm Dishwasher (Design Specific).
- 215L Heat Pump Hot water Service.
- Back to Wall freestanding bath tub (size specific).
- Floor to Ceiling Tiling in Ensuite & Bath
- 4.8 STAR RATING ON PRODUCT REVIEWS
- \$10,000.00 DOLLAR UPGRADE VOUCHER INCLUDED (YOU CHOOSE YOUR UPGRADES AT NO EXTRA CHARGE)



# Westport 15



LOT WIDTH 8.5m<sup>+</sup> LOT DEPTH 25m<sup>+</sup>



## TOTAL AREAS

FAMILY	4930mm x 3560mm	BED 3	3000mm x 2800mm	TOTAL	13718m <sup>2</sup>	14.77sq
MEALS	3360mm x 2710mm	GARAGE	3500mm x 6000mm			
MASTER SUITE	3080mm x 3205mm			EXTERIOR LENGTH		19,800
BED 2	3000mm x 2800mm			EXTERIOR WIDTH		8,430

House size on brochure is based on the Avalon 8.5m facade. Size may vary dependant on facade. Please refer to working drawings for complete dimensions.