



FOR ILLUSTRATION PURPOSES ONLY

ARIA 20

Hamilton Gable
Facade



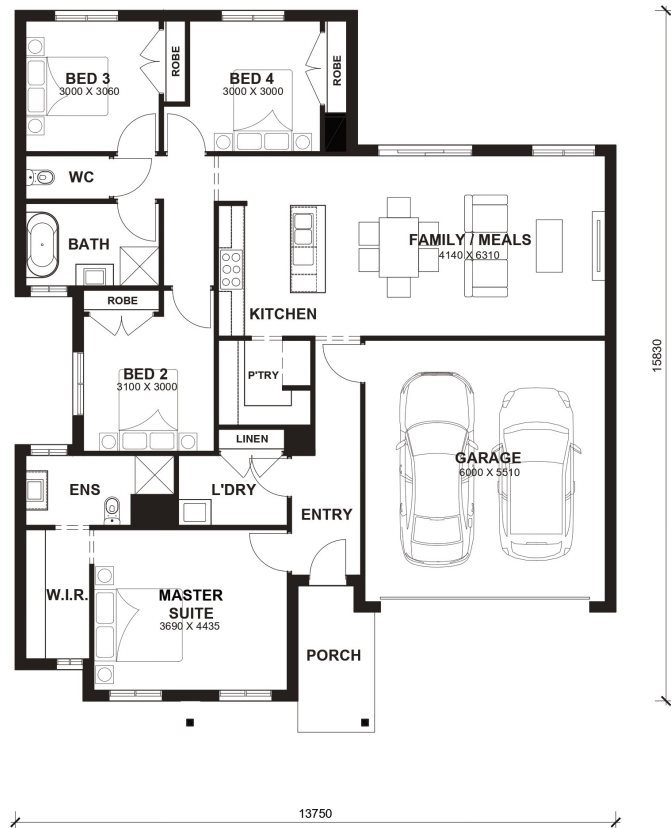
\$577,245

Lot 511 Archers Drive
Lara (Austin Estate)

Lot Size:	294m ²	House Size:	19.99sq
Lot Price:	\$298,800	House Price:	\$278,445

PACKAGE INCLUSIONS :

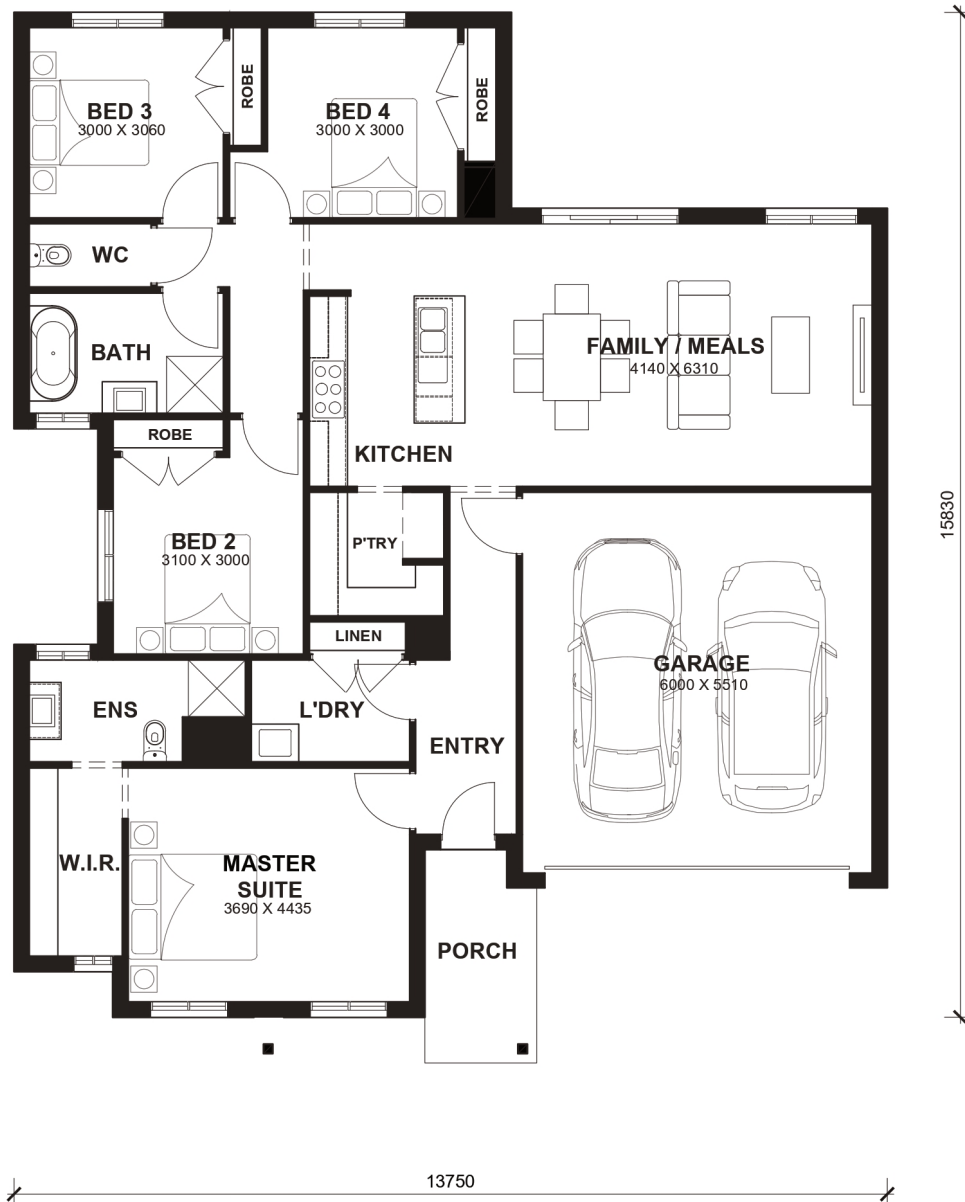
- 2.6kw Solar System
- Double Glazed Windows.
- 20mm Stone Benchtops Throughout.
- 2590mm High Ceilings Throughout.
- Ducted Heating.
- LED Tri-Colour Downlights Throughout.
- Site Costs Included (Subject to T&C's).
- 900mm stainless steel appliances & 600mm Dishwasher (Design Specific).
- 215L Heat Pump Hot water Service.
- Back to Wall freestanding bath tub (size specific).
- Driveway, Letterbox & Antenna
- Floor to Ceiling Tiling in Ensuite & Bath
- Driveway + Front Landscaping + Letterbox + Clothesline + TV Antenna
- 4.8 STAR RATING ON PRODUCT REVIEWS



Aria 20



LOT WIDTH 14m⁺ LOT DEPTH 21m⁺



TOTAL AREAS

FAMILY	4140mm x 6310mm	BED 4	3000mm x 3000mm	TOTAL	185.71m ²	19.99sq
MASTER SUITE	3690mm x 4435mm	GARAGE	6000mm x 5510mm			
BED 2	3100mm x 3000mm			EXTERIOR LENGTH		15,830
BED 3	3000mm x 3060mm			EXTERIOR WIDTH		13,750

House size on brochure is based on the Avalon facade. Size may vary dependant on facade. Please refer to working drawings for complete dimensions.