



FOR ILLUSTRATION PURPOSES ONLY

## ARIA 20

Brooklyn Urban  
Facade



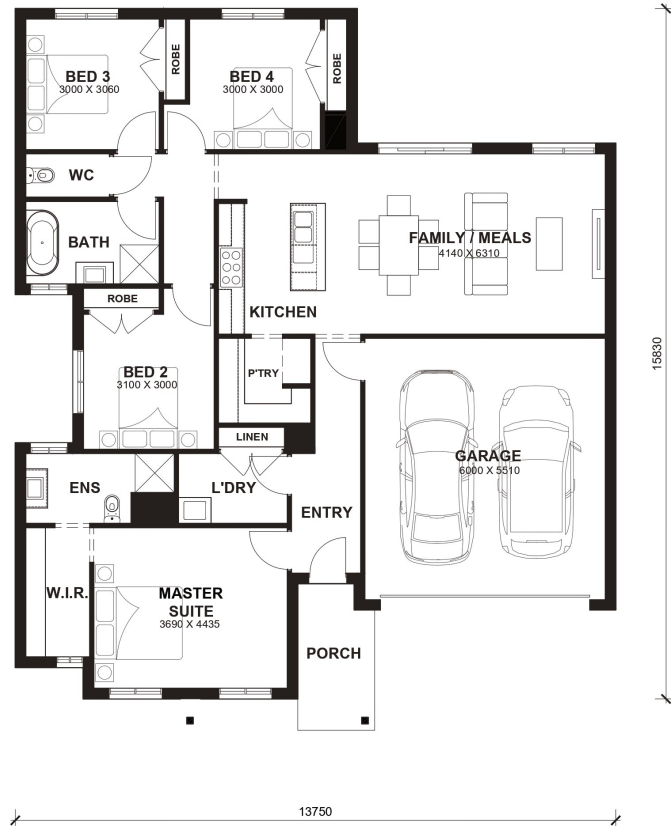
**\$578,680**

Lot 511 29 Archer Drive  
Lara

<b>Lot Size:</b>	294m <sup>2</sup>	<b>House Size:</b>	19.99sq
<b>Lot Price:</b>	\$298,800	<b>House Price:</b>	\$279,880

### PACKAGE INCLUSIONS :

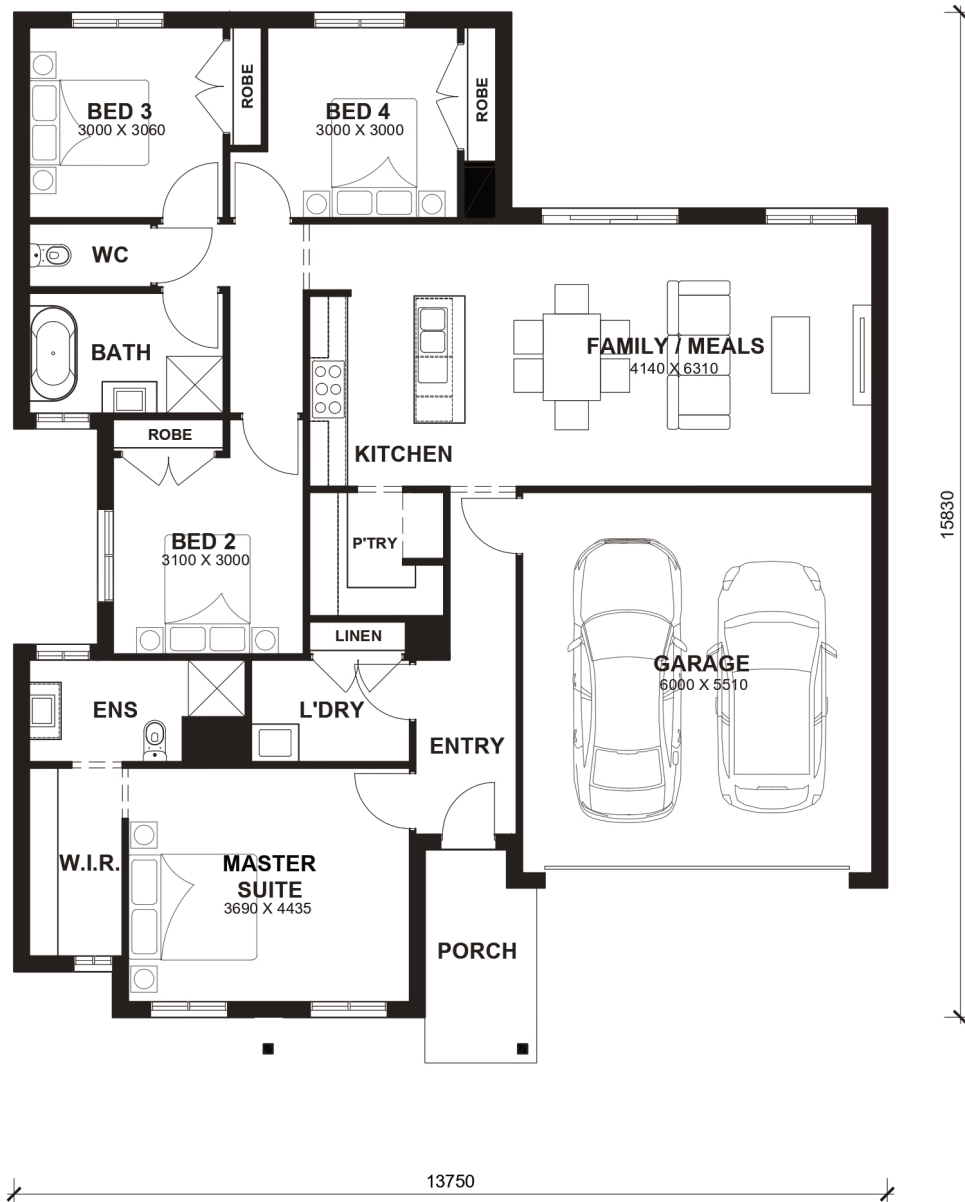
- 2.2kw Solar System
- Double Glazed Windows.
- 20mm Stone Benchtops Throughout.
- 2590mm High Ceilings Throughout.
- Ducted Heating.
- LED Tri-Colour Downlights Throughout.
- Glazed Porcelain Tiles To All Wet Areas (Including Showerbase).
- Soft Closing Drawers & Doors To All Cabinets.
- 900mm stainless steel appliances & 600mm Dishwasher (Design Specific).
- 215L Heat Pump Hot water Service.
- Back to Wall freestanding bath tub (size specific).



# Aria 20



LOT WIDTH 14m<sup>+</sup> LOT DEPTH 21m<sup>+</sup>



## TOTAL AREAS

FAMILY	4140mm x 6310mm	BED 4	3000mm x 3000mm	TOTAL	185.71m <sup>2</sup>	19.99sq
MASTER SUITE	3690mm x 4435mm	GARAGE	6000mm x 5510mm			
BED 2	3100mm x 3000mm			EXTERIOR LENGTH		15,830
BED 3	3000mm x 3060mm			EXTERIOR WIDTH		13,750

House size on brochure is based on the Avalon facade. Size may vary dependant on facade. Please refer to working drawings for complete dimensions.