



FOR ILLUSTRATION PURPOSES ONLY

Kimberley 18

Hamilton Natural Facade



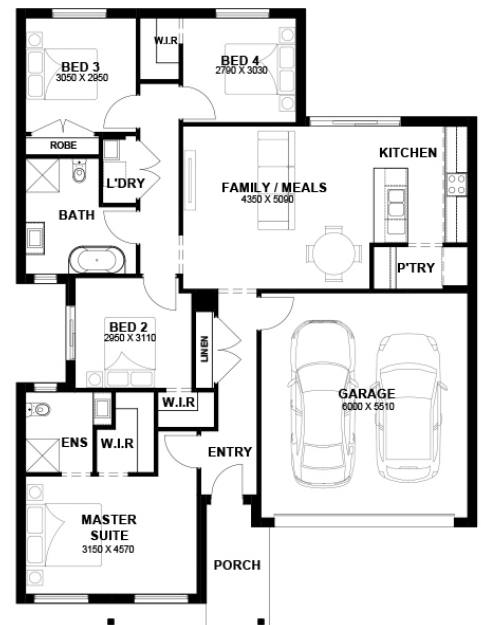
\$573,250

Lot 33244 Kestrel Street
Kalkallo (Cloverton Estate)

Lot Size:	263m ²	House Size:	18.22m ²
Lot Price:	\$307,000	House Price:	\$266,250

PACKAGE INCLUSIONS :

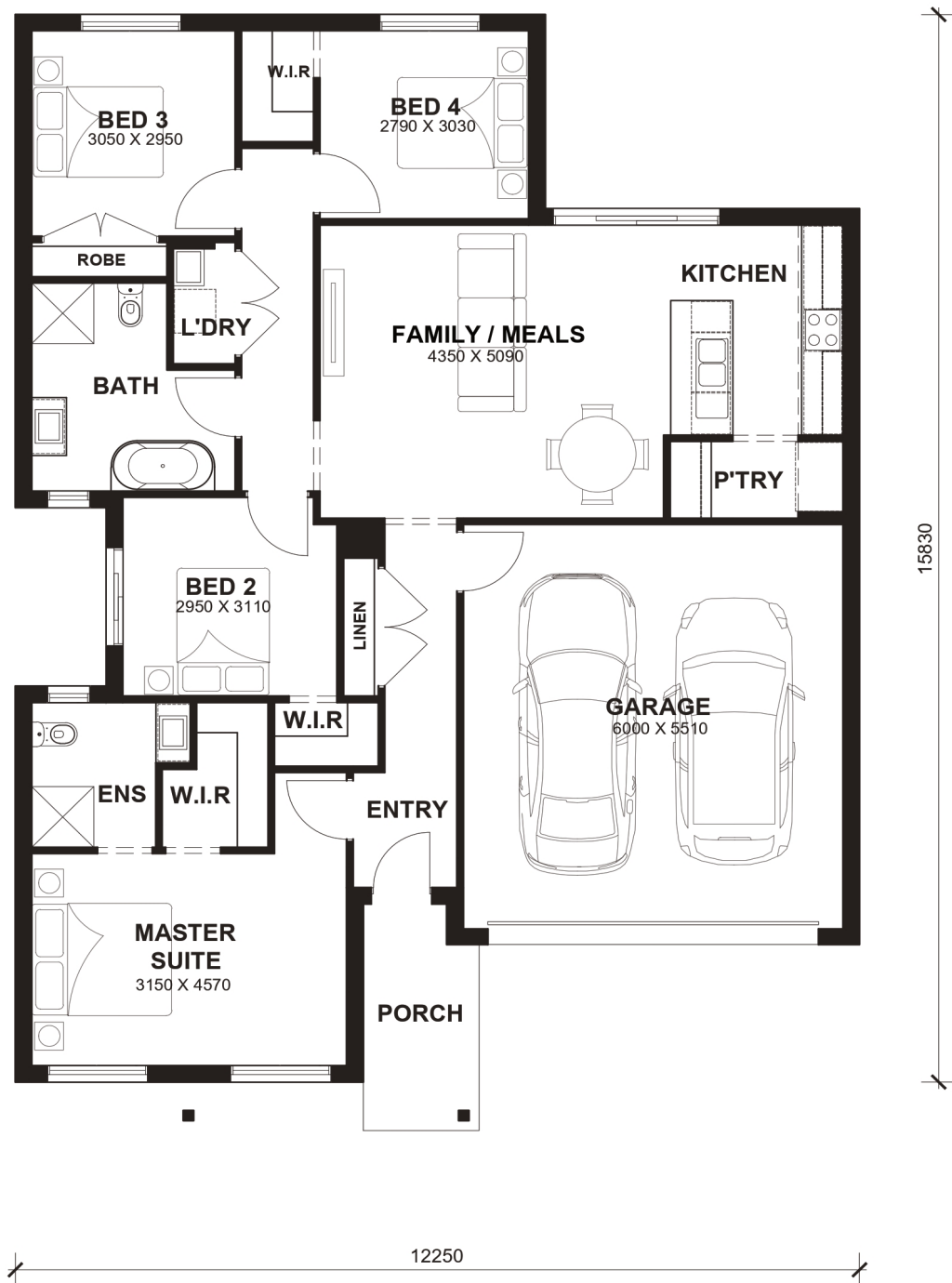
- 2.2kw Solar System
- Double Glazed Windows.
- 20mm Stone Benchtops Throughout.
- 2590mm High Ceilings Throughout.
- Ducted Heating.
- LED Tri-Colour Downlights Throughout.
- Glazed Porcelain Tiles To All Wet Areas (Including Showerbase).
- Soft Closing Drawers & Doors To All Cabinets.
- 900mm stainless steel appliances & 600mm Dishwasher (Design Specific).
- 215L Heat Pump Hot water Service.
- Back to Wall freestanding bath tub (size specific).



Kimberly 18



LOT WIDTH LOT DEPTH
12.5m⁺ 21m⁺



TOTAL AREAS

FAMILY / MEALS	4350mm x 5090mm	BED 4	2790mm x 3030mm	TOTAL	169.22m ²	18.22sq
MASTER SUITE	3150mm x 4570mm	GARAGE	6000mm x 5510mm			
BED 2	2950mm x 3110mm			EXTERIOR LENGTH		15,830
BED 3	3050mm x 2950mm			EXTERIOR WIDTH		12,250

House size on brochure is based on the Avalon facade. Size may vary dependant on facade. Please refer to working drawings for complete dimensions.