



FOR ILLUSTRATION PURPOSES ONLY

## Cassini 19

Monsanto Facade



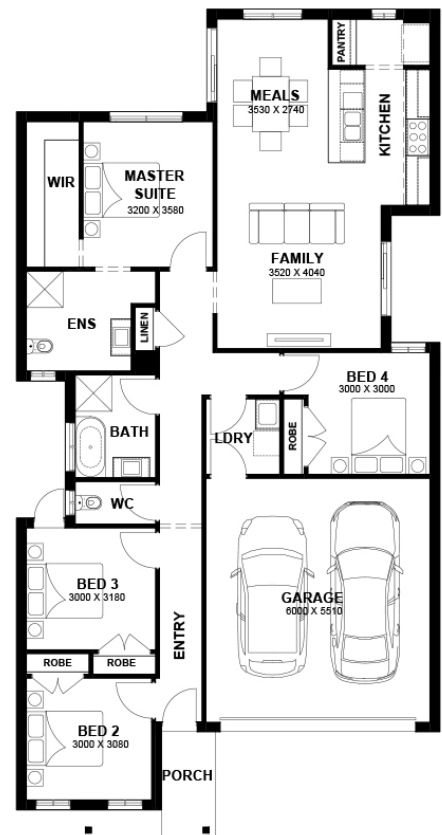
# \$599,450

Lot 333 Lucania Crescent  
Tarneit (Harlow Estate)

<b>Lot Size:</b>	263sq	<b>House Size:</b>	19.03sq
<b>Lot Price:</b>	\$310,000	<b>House Price:</b>	\$289,450

### PACKAGE INCLUSIONS :

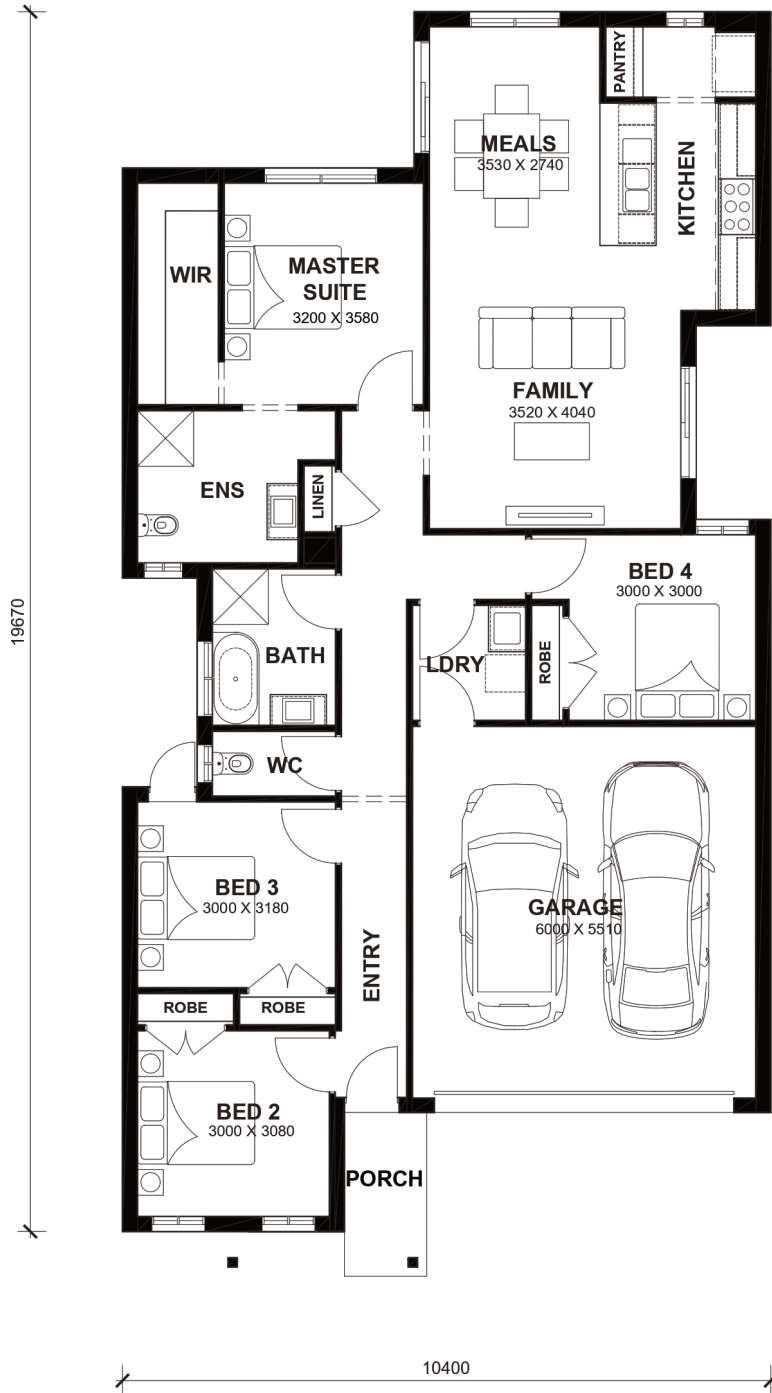
- 2.2kw Solar System
- Double Glazed Windows.
- 20mm Stone Benchtops Throughout.
- 2590mm High Ceilings Throughout.
- Ducted Heating.
- LED Tri-Colour Downlights Throughout.
- Glazed Porcelain Tiles To All Wet Areas (Including Showerbase).
- Soft Closing Drawers & Doors To All Cabinets.
- 900mm stainless steel appliances (Design Specific).
- 215L Heat Pump Hot water Service.
- Back to Wall freestanding bath tub (size specific).



# Cassini 19



LOT WIDTH 10.5m<sup>+</sup> LOT DEPTH 25m<sup>+</sup>



## TOTAL AREAS

FAMILY	3520mm x 4040mm	BED 3	3000mm x 3180mm	TOTAL	176.78m <sup>2</sup>	19.03sq
MEALS	3530mm x 2740mm	BED 4	3000mm x 3000mm			
MASTER SUITE	3200mm x 3580mm	GARAGE	6000mm x 5510mm	EXTERIOR LENGTH		19,670
BED 2	3000mm x 3080mm			EXTERIOR WIDTH		10,400

House size on brochure is based on the Avalon facade. Size may vary dependant on facade. Please refer to working drawings for complete dimensions.