



FOR ILLUSTRATION PURPOSES ONLY

EDEN 15.5

Avalon Facade



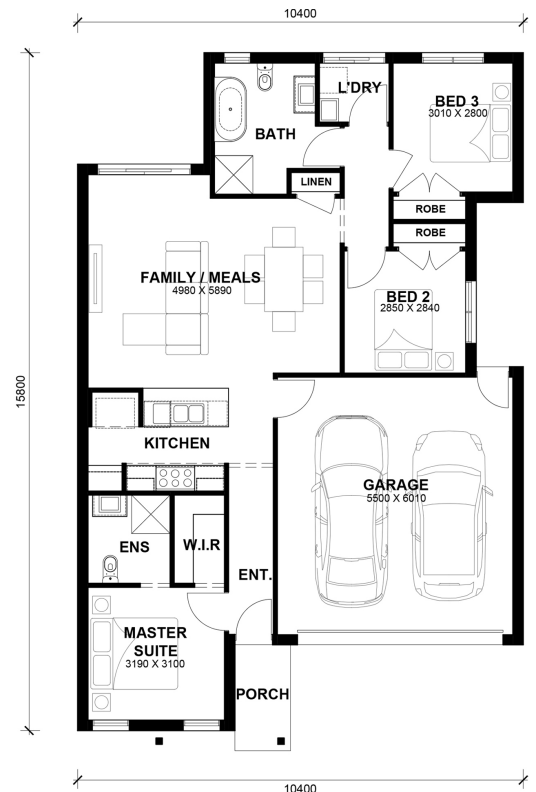
\$545,500

Lot 33254 Kestrel Street
Kalkallo (Cloverton Estate)

Lot Size:	221sq	House Size:	15.50sq
Lot Price:	\$268,000	House Price:	\$277,500

PACKAGE INCLUSIONS :

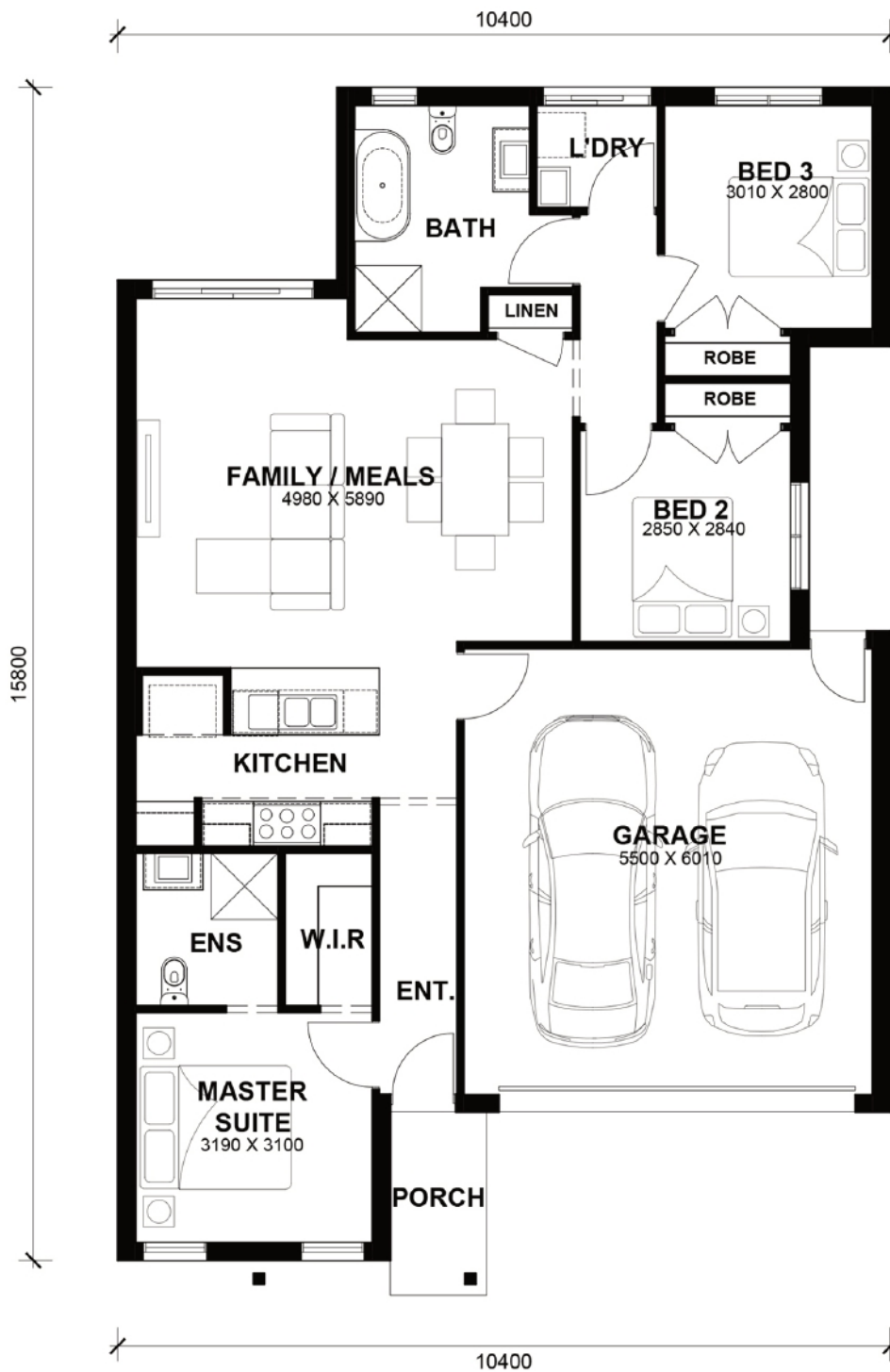
- 2.2kw Solar System
- Double Glazed Windows.
- 20mm Stone Benchtops Throughout.
- 22.5 Degree Roof Pitch.
- 2590mm High Ceilings Throughout.
- Ducted Heating.
- Feature Finish Facade.
- LED Tri-Colour Downlights Throughout.
- Glazed Porcelain Tiles To All Wet Areas (Including Showerbase).
- Soft Closing Drawers & Doors To All Cabinets.
- Tile Splashback To Kitchen.
- 900mm stainless steel appliances (Design Specific).
- 215L Heat Pump Hot water Service.



Eden 15.5



LOT WIDTH LOT DEPTH
10.5m+ 21m+



TOTAL AREAS

FAMILY / MEALS	4980mm x 5980mm	GARAGE	5500mm x 6010mm	TOTAL	143.12m ²	15.4lsq
MASTER SUITE	3190mm x 3100mm					
BED 2	2850mm x 2840mm			EXTERIOR LENGTH		15,800
BED 3	3010mm x 2800mm			EXTERIOR WIDTH		10,400

House size on brochure is based on the Avalon facade. Size may vary dependant on facade. Please refer to working drawings for complete dimensions.