



FOR ILLUSTRATION PURPOSES ONLY

## Verve 20

Monsanto Facade



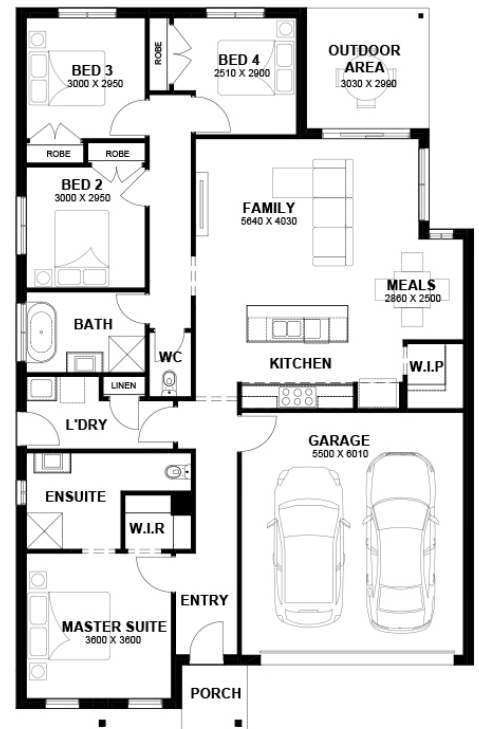
# \$582,500

Lot 3222 Foreshores Drive  
**Donnybrook (Peppercorn Hill Estate)**

<b>Lot Size:</b>	312.50m <sup>2</sup>	<b>House Size:</b>	20.01sq
<b>Lot Price:</b>	\$325,000	<b>House Price:</b>	\$257,500

### PACKAGE INCLUSIONS :

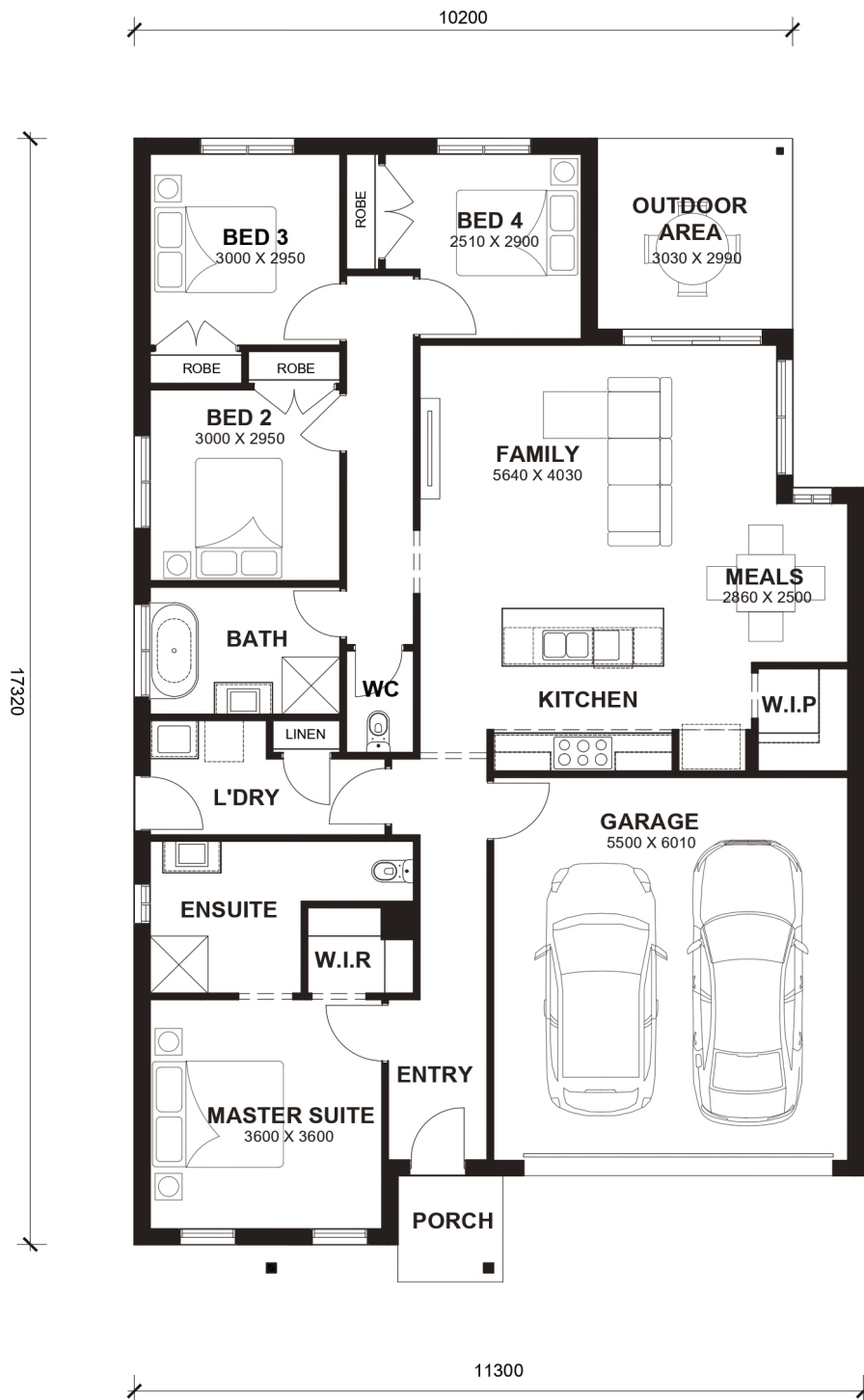
- Tiles/Laminate flooring in living areas
- Led Downlights throughout the House
- 2.2kw Solar System
- Double Glazed Windows.
- 20mm Stone Benchtops Throughout.
- Ducted Heating.
- Flyscreens To All Openable Windows.
- LED Tri-Colour Downlights Throughout.
- Glazed Porcelain Tiles To All Wet Areas (Including Showerbase).
- Soft Closing Drawers & Doors To All Cabinets.
- 900mm stainless steel appliances (Design Specific).
- 215L Heat Pump Hot water Service.
- Back to Wall freestanding bath tub (size specific).



# Verve 20



LOT WIDTH 12.5m<sup>+</sup> LOT DEPTH 25m<sup>+</sup>



## TOTAL AREAS

FAMILY	5640mm x 4030mm	BED 3	3000mm x 2950mm	TOTAL	185.91m <sup>2</sup>	20.01sq
MEALS	2860mm x 2500mm	BED 4	2510mm x 2900mm			
MASTER SUITE	3600mm x 3600mm	OUTDOOR AREA	3030mm x 2990mm	EXTERIOR LENGTH		17,320
BED 2	3000mm x 2950mm	GARAGE	5500mm x 6010mm	EXTERIOR WIDTH		11,300

House size on brochure is based on the Avalon facade. Size may vary dependant on facade. Please refer to working drawings for complete dimensions.