



FOR ILLUSTRATION PURPOSES ONLY

BAYVIEW 22

Royale Facade



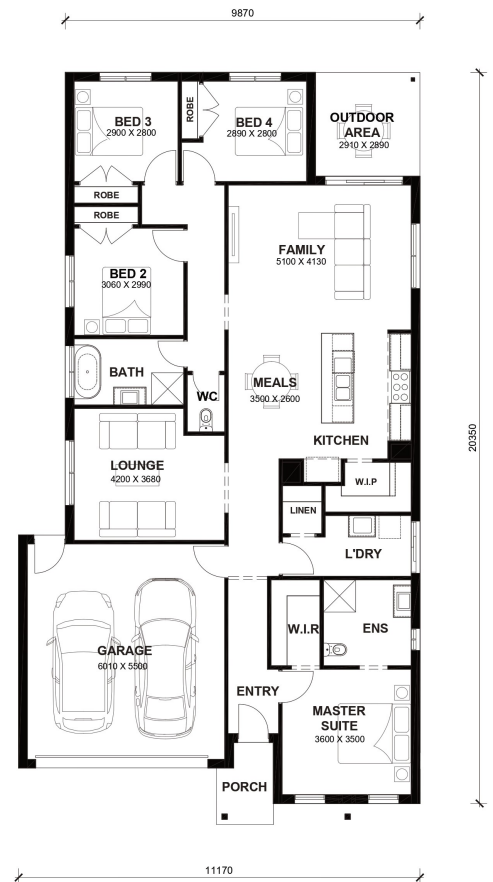
\$640,000

Lot 30429 Hopetoun Crescent
Donnybrook (Peppercorn Hill Estate)

Lot Size:	3500m ²	House Size:	22.32sq
Lot Price:	\$363,000	House Price:	\$277,000

PACKAGE INCLUSIONS :

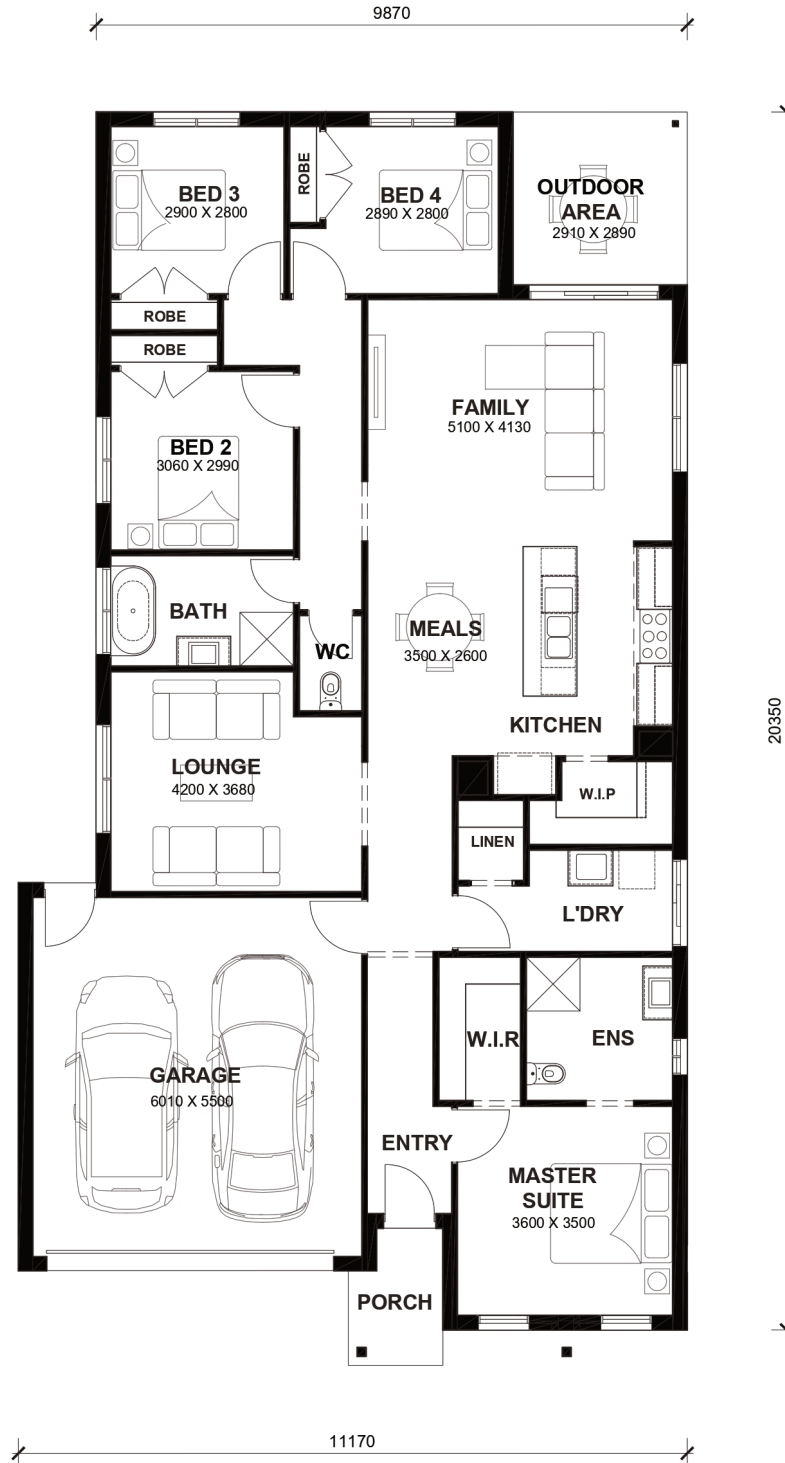
- Tiles/Laminate flooring in living areas
- Led Downlights throughout the House
- 2.2kw Solar System
- Double Glazed Windows.
- 20mm Stone Benchtops Throughout.
- Ducted Heating.
- Flyscreens To All Openable Windows.
- LED Tri-Colour Downlights Throughout.
- Glazed Porcelain Tiles To All Wet Areas (Including Showerbase).
- Soft Closing Drawers & Doors To All Cabinets.
- 900mm stainless steel appliances (Design Specific).
- 215L Heat Pump Hot water Service.
- Back to Wall freestanding bath tub (size specific).



Bayview 22



LOT WIDTH 12.5m⁺ LOT DEPTH 28m⁺



TOTAL AREAS

FAMILY	5100mm x 4130mm	BED 4	2890mm x 2800mm	TOTAL	207.39m ²	22.32sq
MEALS	3500mm x 2600mm	LOUNGE	4200mm x 3680mm			
MASTER SUITE	3600mm x 3500mm	OUTDOOR AREA	2910mm x 2890mm	EXTERIOR LENGTH		20,350
BED 2	3060mm x 2990mm	GARAGE	6010mm x 5500mm	EXTERIOR WIDTH		11,170
BED 3	2900mm x 2800mm					

House size on brochure is based on the Avalon facade. Size may vary dependant on facade. Please refer to working drawings for complete dimensions.