



FOR ILLUSTRATION PURPOSES ONLY

ASPEN 22.5

Luxembourg Facade



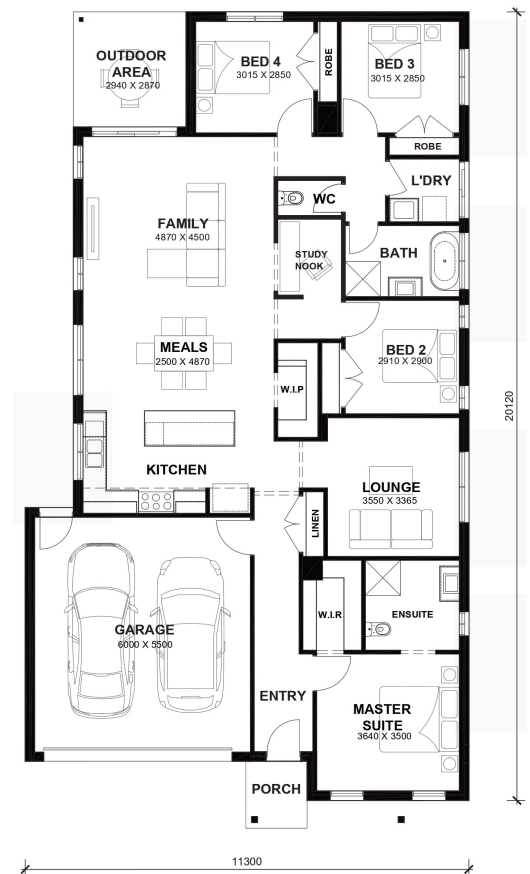
\$640,700

Lot 30422 Hopetoun Crescent
Donnybrook (Peppercorn Hill Estate)

Lot Size:	350m ²	House Size:	22.51sq
Lot Price:	\$363,000	House Price:	\$277,700

PACKAGE INCLUSIONS :

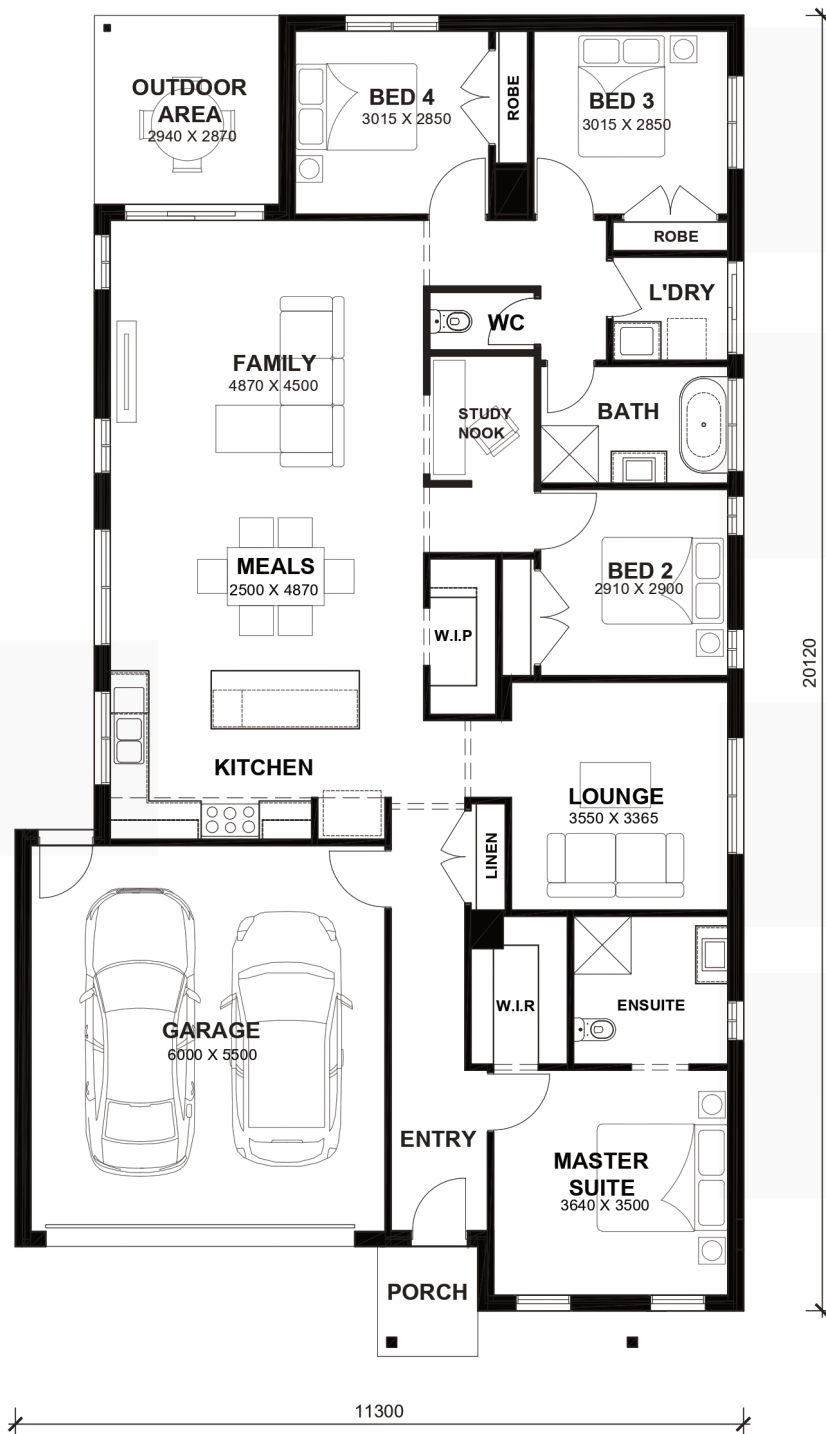
- Tiles/Laminate flooring in living areas
- Led Downlights throughout the House
- 2.2kw Solar System
- Double Glazed Windows.
- 20mm Stone Benchtops Throughout.
- Ducted Heating.
- Flyscreens To All Openable Windows.
- LED Tri-Colour Downlights Throughout.
- Glazed Porcelain Tiles To All Wet Areas (Including Showerbase).
- Soft Closing Drawers & Doors To All Cabinets.
- 900mm stainless steel appliances (Design Specific).
- 215L Heat Pump Hot water Service.
- Back to Wall freestanding bath tub (size specific).



Aspen 22.5



LOT WIDTH 12.5m⁺ LOT DEPTH 28m⁺



TOTAL AREAS

FAMILY	4870mm x 4500mm	BED 4	3015mm x 2850mm	TOTAL	209.14m ²	22.51sq
MEALS	2500mm x 4870mm	LOUNGE	3550mm x 3365mm			
MASTER SUITE	3640mm x 3500mm	OUTDOOR AREA	2940mm x 2870mm	EXTERIOR LENGTH		20,120
BED 2	2910mm x 2900mm	GARAGE	6000mm x 5500mm	EXTERIOR WIDTH		11,300
BED 3	3015mm x 2850mm					

House size on brochure is based on the Avalon facade. Size may vary dependant on facade. Please refer to working drawings for complete dimensions.