



FOR ILLUSTRATION PURPOSES ONLY

## Sienna 19

Luxembourg Facade



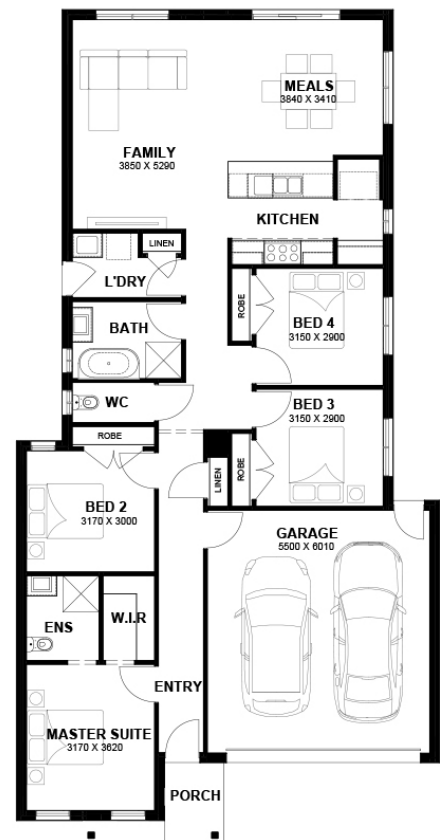
# \$546,450

Lot 1534 Savana Estate  
**Wyndham Vale (Savana Estate)**

<b>Lot Size:</b> 294sq	<b>House Size:</b> 19.15sq
<b>Lot Price:</b> \$290,000	<b>House Price:</b> \$256,450

### PACKAGE INCLUSIONS :

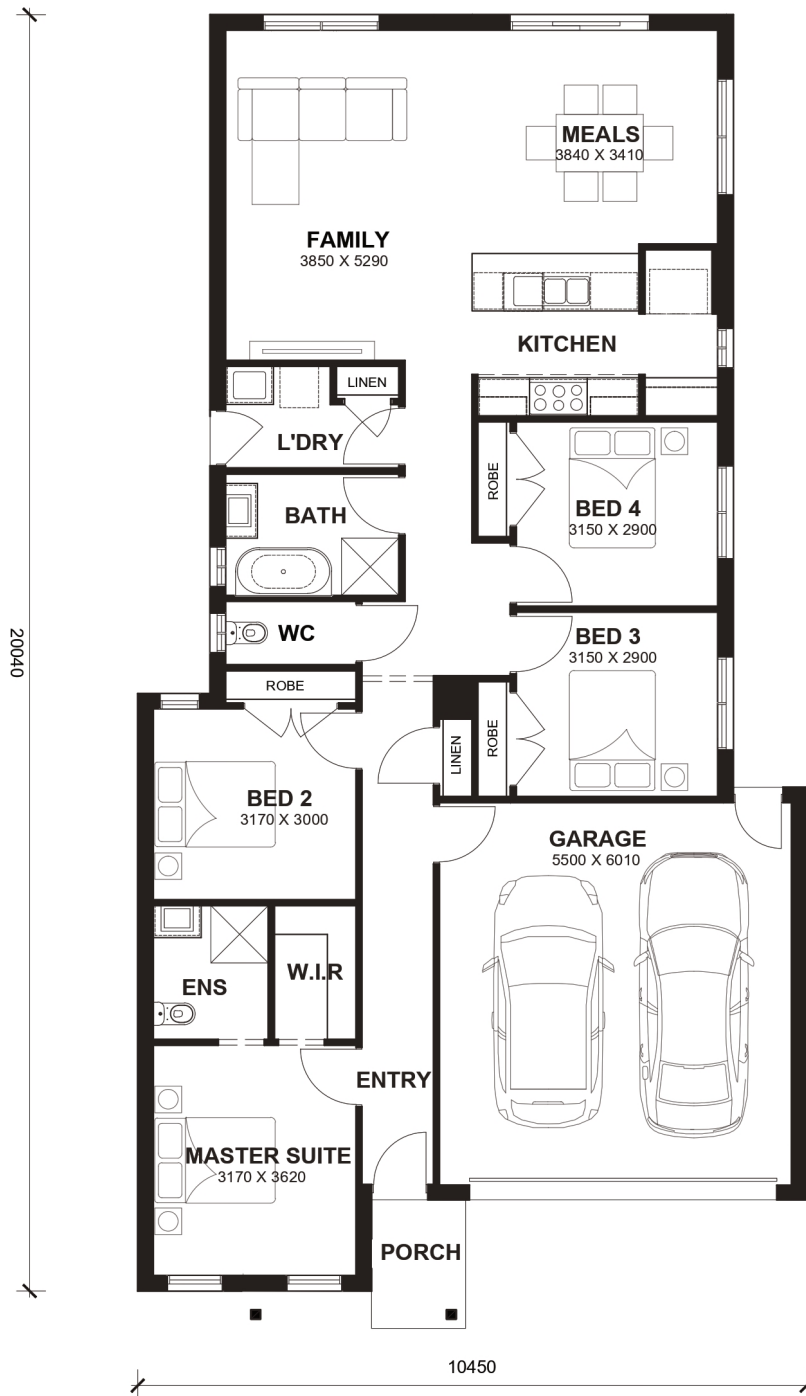
- Tiles/Laminate flooring in living areas
- Led Downlights throughout the House
- 900mm x 900mm Tiled Shower Base
- 2.2kw Solar System
- Double Glazed Windows.
- TITLED LAND
- 20mm Stone Benchtops Throughout.
- Ducted Heating.
- Flyscreens To All Openable Windows.
- Glazed Porcelain Tiles To All Wet Areas (Including Showerbase).
- Soft Closing Drawers & Doors To All Cabinets.
- 900mm stainless steel appliances (Design Specific).
- 215L Heat Pump Hot water Service.
- Back to Wall freestanding bath tub (size specific).



# Sienna 19



LOT WIDTH 10.5m<sup>+</sup> LOT DEPTH 28m<sup>+</sup>



## TOTAL AREAS

FAMILY	3850mm x 5290mm	BED 3	3150mm x 2900mm	TOTAL	177.87m <sup>2</sup>	19.15sq
MEALS	3840mm x 3410mm	BED 4	3150mm x 2900mm			
MASTER SUITE	3170mm x 3620mm	GARAGE	5500mm x 6010mm	EXTERIOR LENGTH		20,040
BED 2	3170mm x 3000mm			EXTERIOR WIDTH		10,450

House size on brochure is based on the Avalon facade. Size may vary dependant on facade. Please refer to working drawings for complete dimensions.