



FOR ILLUSTRATION PURPOSES ONLY

ASPEN 22.5

Brooklyn Urban
Facade



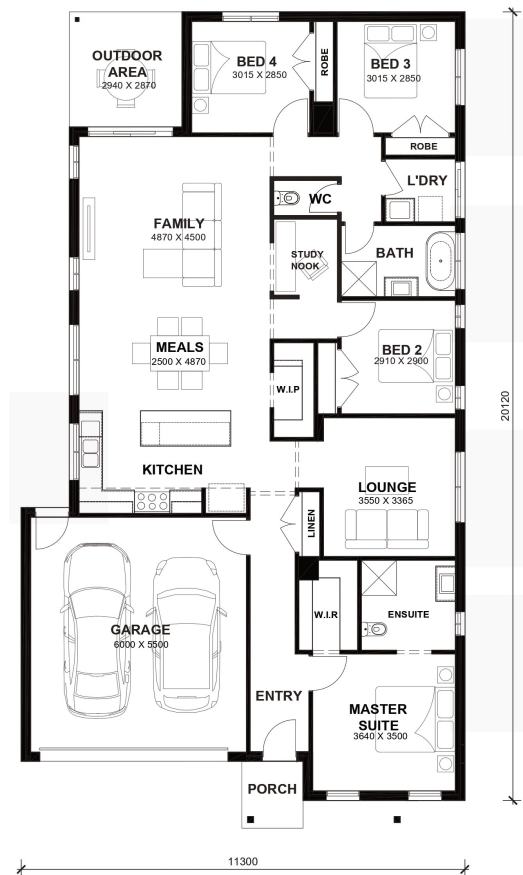
\$614,940

Lot 20138 Granville Street
Manor Lakes (The Village Estate)

Lot Size: 350sq	House Size: 22.51sq
Lot Price: \$314,000	House Price: \$300,940

PACKAGE INCLUSIONS :

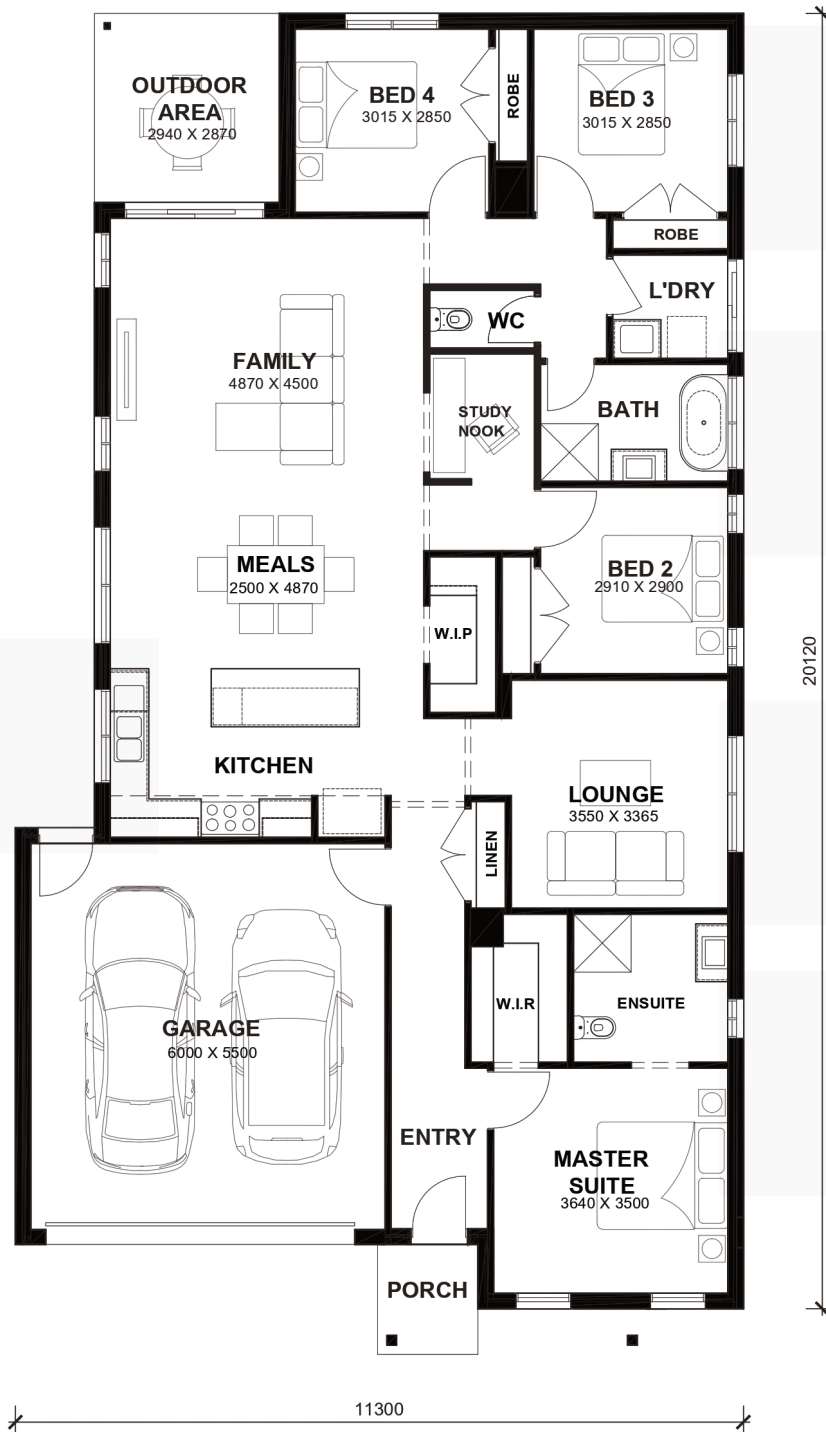
- Tiles/Laminate flooring in living areas
- Led Downlights throughout the House
- 900mm x 900mm Tiled Shower Base
- Double Glazed Windows.
- 20mm Stone Benchtops Throughout.
- 2590mm High Ceilings Throughout.
- Developer Guidelines & Covenants Included.
- Site Costs Included (Subject to T&C's).
- 900mm stainless steel appliances (Design Specific).
- 215L Heat Pump Hot water Service.
- Soft Closing Drawers & Doors To All Cabinets.
- - Flexible floor plans & so much more!
- 30K REBATE APPLIED TO TOTAL PRICE



Aspen 22.5



LOT WIDTH 12.5m⁺ LOT DEPTH 28m⁺



TOTAL AREAS

FAMILY	4870mm x 4500mm	BED 4	3015mm x 2850mm	TOTAL	209.14m ²	22.51sq
MEALS	2500mm x 4870mm	LOUNGE	3550mm x 3365mm			
MASTER SUITE	3640mm x 3500mm	OUTDOOR AREA	2940mm x 2870mm	EXTERIOR LENGTH		20,120
BED 2	2910mm x 2900mm	GARAGE	6000mm x 5500mm	EXTERIOR WIDTH		11,300
BED 3	3015mm x 2850mm					

House size on brochure is based on the Avalon facade. Size may vary dependant on facade. Please refer to working drawings for complete dimensions.