



FOR ILLUSTRATION PURPOSES ONLY

# BAYVIEW 27

Stanley Facade



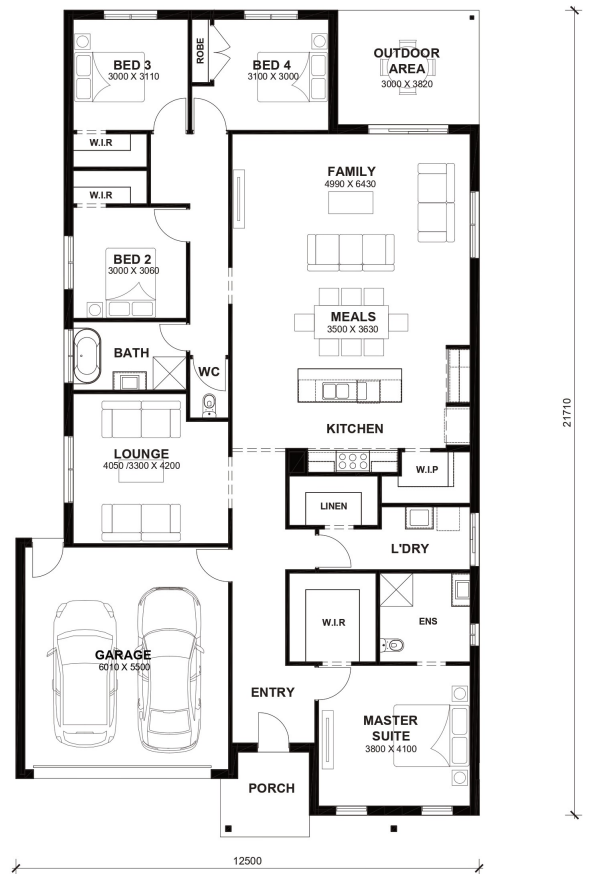
# \$823,790

Lot 353 Winton Drive  
Fraser Rise (Society 1056 Estate)

<b>Lot Size:</b>	496sq	<b>House Size:</b>	26.94sq
<b>Lot Price:</b>	\$507,000	<b>House Price:</b>	\$316,790

### PACKAGE INCLUSIONS :

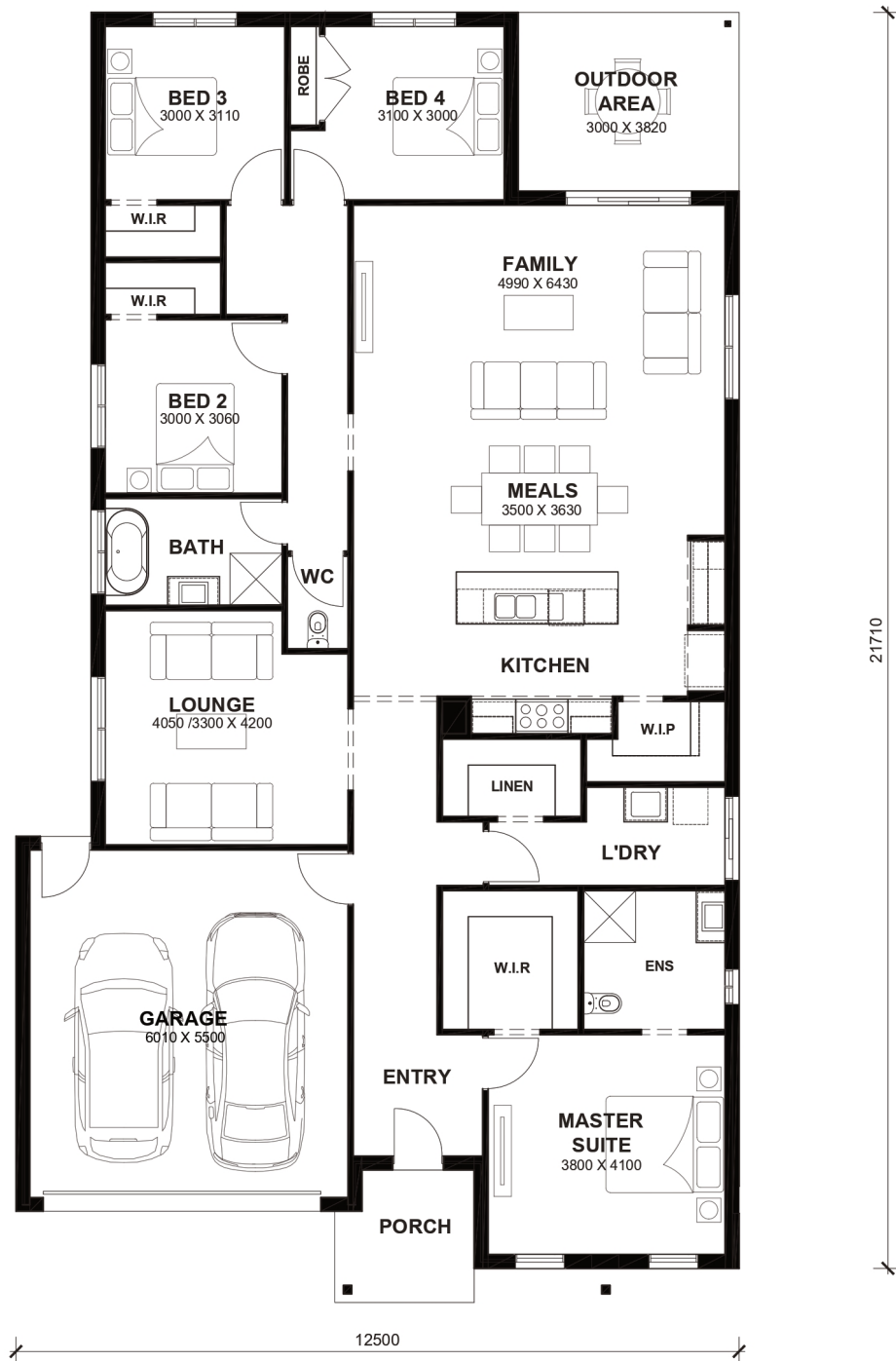
- Tiles/Laminate flooring in living areas
- Led Downlights throughout the House
- 900mm x 900mm Tiled Shower Base
- Double Glazed Windows.
- 20mm Stone Benchtops Throughout.
- 2590mm High Ceilings Throughout.
- Developer Guidelines & Covenants Included.
- Flyscreens To All Openable Windows.
- Site Costs Included (Subject to T&C's).
- 900mm stainless steel appliances (Design Specific).
- Floor to Ceiling Tiling in Ensuite
- Front Landscaping
- Land rebate Included up to \$10k subject to availability.
- Soft Closing Drawers & Doors To All Cabinets.
- Special Bonuses: Free front landscaping with 6 months maintenance and a 5kW solar package\*\*\*.



# Bayview 27



LOT WIDTH 14m<sup>+</sup> LOT DEPTH 30m<sup>+</sup>



## TOTAL AREAS

FAMILY	4990mm x 6430mm	BED 4	3100mm x 3000mm	TOTAL	250.31m <sup>2</sup>	26.94sq
MEALS	3500mm x 3630mm	LOUNGE	4050 / 3300mm x 4200mm			
MASTER SUITE	3800mm x 4010mm	OUTDOOR AREA	3000mm x 3820mm	EXTERIOR LENGTH		21,710
BED 2	3000mm x 3060mm	GARAGE	6010mm x 5500mm	EXTERIOR WIDTH		12,500
BED 3	3000mm x 3110mm					

House size on brochure is based on the Avalon facade. Size may vary dependant on facade. Please refer to working drawings for complete dimensions.