



FOR ILLUSTRATION PURPOSES ONLY

## Verve 20

Cascade Facade



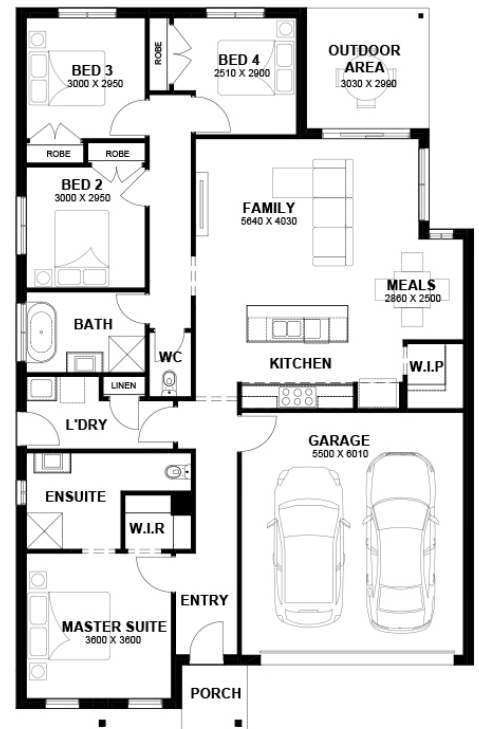
# \$631,890

Lot 318 Cherish Street  
Fraser Rise (Society 1056 Estate)

<b>Lot Size:</b>	312.50sq	<b>House Size:</b>	20.01sq
<b>Lot Price:</b>	\$363,000	<b>House Price:</b>	\$268,890

### PACKAGE INCLUSIONS :

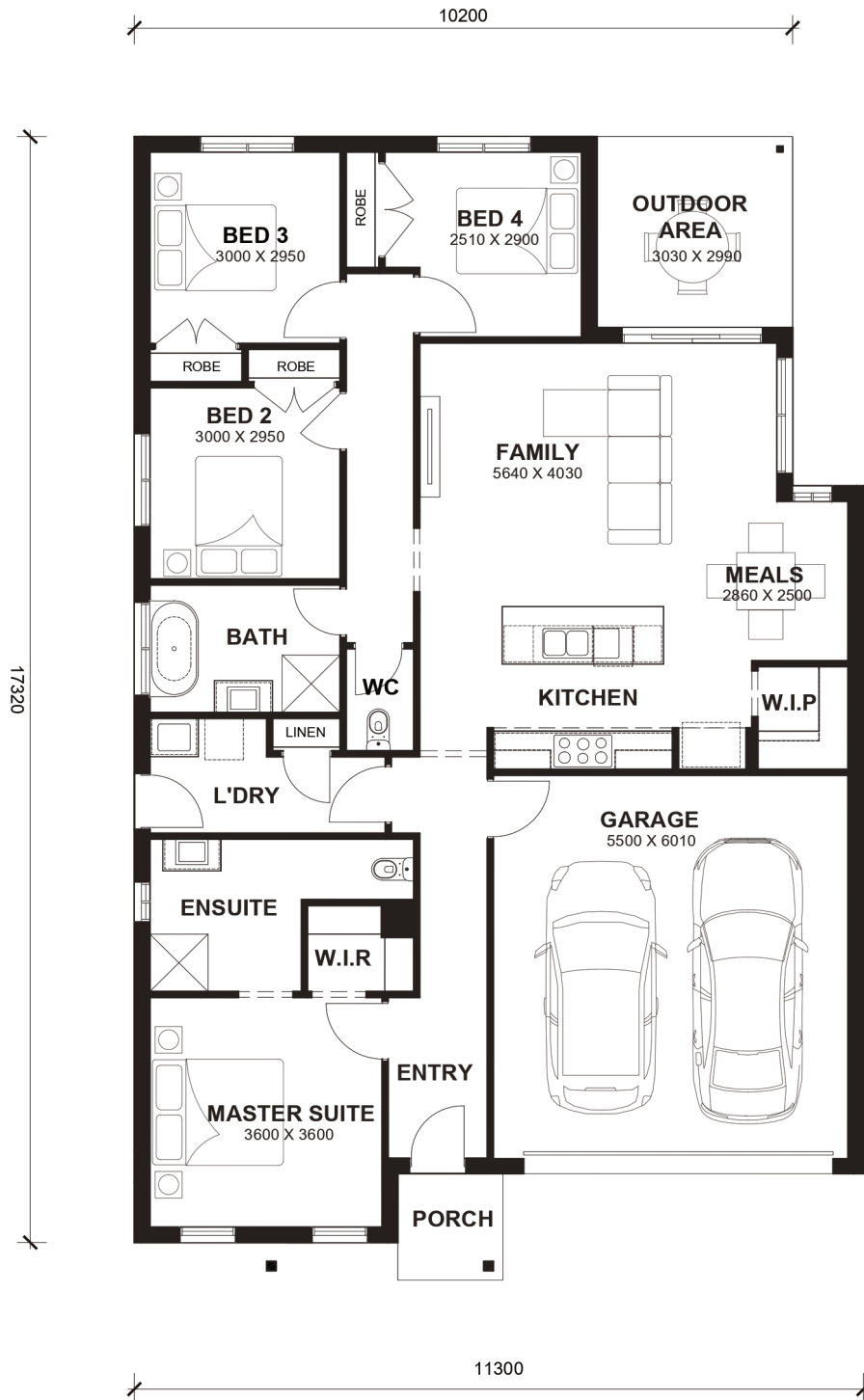
- Tiles/Laminate flooring in living areas
- Led Downlights throughout the House
- 900mm x 900mm Tiled Shower Base
- Double Glazed Windows.
- 20mm Stone Benchtops Throughout.
- 2590mm High Ceilings Throughout.
- Developer Guidelines & Covenants Included.
- Flyscreens To All Openable Windows.
- Site Costs Included (Subject to T&C's).
- 900mm stainless steel appliances (Design Specific).
- Floor to Ceiling Tiling in Ensuite
- Front Landscaping
- Land rebate Included up to \$10k subject to availability.
- Soft Closing Drawers & Doors To All Cabinets.
- Special Bonuses: Free front landscaping with 6 months maintenance and a 5kW solar package\*\*\*.



# Verve 20



LOT WIDTH 12.5m<sup>+</sup> LOT DEPTH 25m<sup>+</sup>



## TOTAL AREAS

FAMILY	5640mm x 4030mm	BED 3	3000mm x 2950mm	TOTAL	185.91m <sup>2</sup>	20.01sq
MEALS	2860mm x 2500mm	BED 4	2510mm x 2900mm			
MASTER SUITE	3600mm x 3600mm	OUTDOOR AREA	3030mm x 2990mm	EXTERIOR LENGTH		17,320
BED 2	3000mm x 2950mm	GARAGE	5500mm x 6010mm	EXTERIOR WIDTH		11,300