



FOR ILLUSTRATION PURPOSES ONLY

## ARIA 25

Avalon Facade



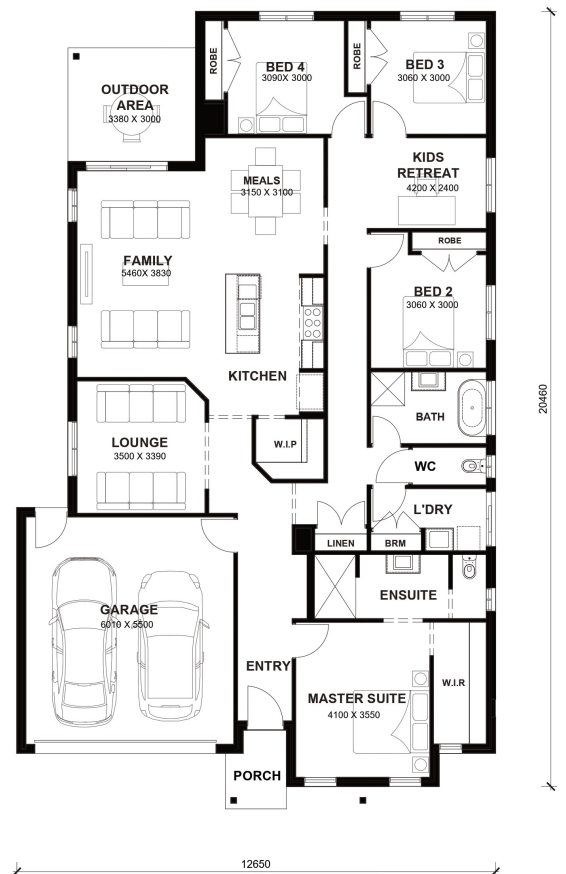
# \$654,200

Lot 203 Broadstead Estate  
**Kilmore (Broadstead Estate)**

<b>Lot Size:</b>	630m <sup>2</sup>	<b>House Size:</b>	25.19sq
<b>Lot Price:</b>	\$360,000	<b>House Price:</b>	\$294,200

### PACKAGE INCLUSIONS :

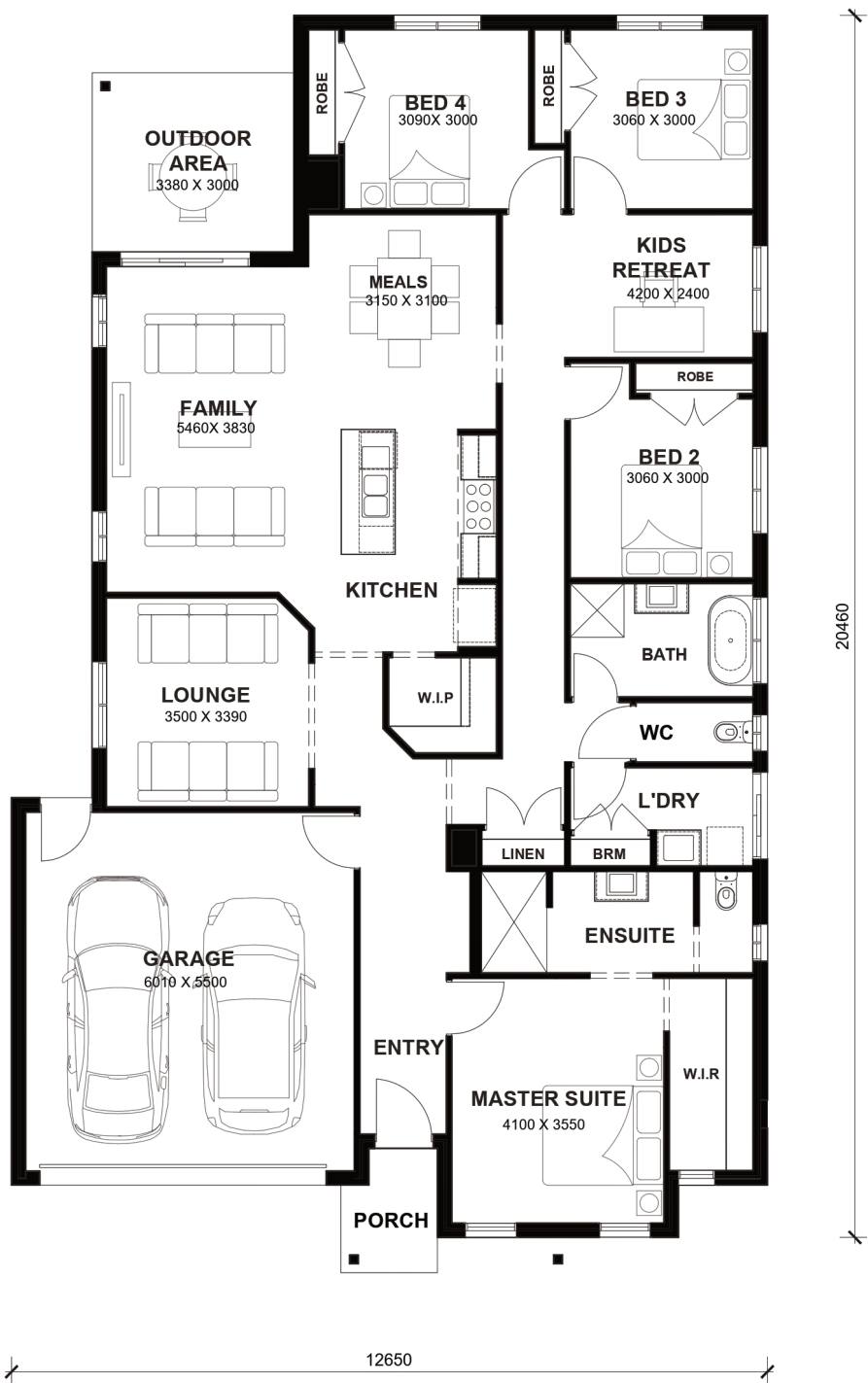
- Tiles/Laminate flooring in living areas
- Led Downlights throughout the House
- 2.2kw Solar System
- Double Glazed Windows.
- 20mm Stone Benchtops Throughout.
- Ducted Heating.
- Flyscreens To All Openable Windows.
- Glazed Porcelain Tiles To All Wet Areas (Including Showerbase).
- Soft Closing Drawers & Doors To All Cabinets.
- 900mm stainless steel appliances (Design Specific).
- 215L Heat Pump Hot water Service.
- Back to Wall freestanding bath tub (size specific).



# Aria 25



LOT WIDTH LOT DEPTH  
14m+ 28m+



## TOTAL AREAS

FAMILY	5460mm x 3830mm	BED 3	3060mm x 3000mm	TOTAL	234.01m <sup>2</sup>	25.19sq
MEALS	3150mm x 3100mm	BED 4	3090mm x 3000mm			
LOUNGE	3500mm x 3390mm	KIDS RETREAT	4200mm x 2400mm	EXTERIOR LENGTH		20,460
MASTER SUITE	4100mm x 3550mm	OUTDOOR AREA	3380mm x 3000mm	EXTERIOR WIDTH		12,650
BED 2	3060mm x 3000mm	GARAGE	6010mm x 5500mm			

House size on brochure is based on the Avalon facade. Size may vary dependant on facade. Please refer to working drawings for complete dimensions.