

# daylesford 26.5

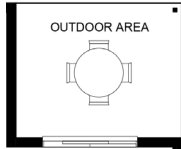
LOT WIDTH 14m<sup>+</sup> LOT DEPTH 30m<sup>+</sup>



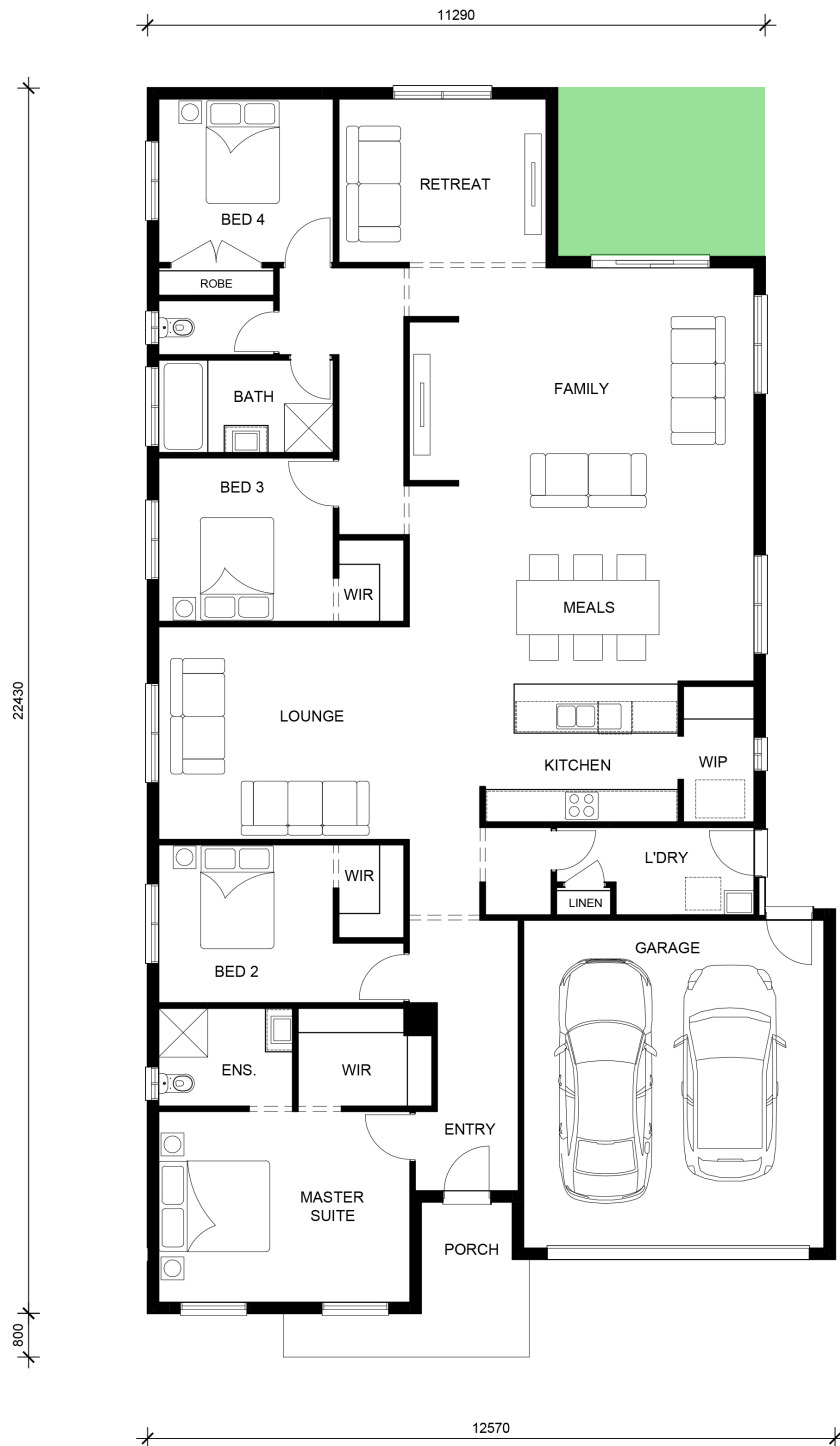
## DESIGN OPTIONS

### OPTION 1

Outdoor Area



OUTDOOR AREA  
3800mm x 3090mm



## TOTAL AREAS

MASTER SUITE	4600mm x 3500mm	RETREAT	3800mm x 3000mm	TOTAL	249.03m <sup>2</sup>	26.81sq
BED 2	3200mm x 2900mm	FAMILY/MEALS	6310mm x 7570mm	EXTERIOR LENGTH		22,430
BED 3	3200mm x 3000mm	LOUNGE	4580mm x 3900mm	EXTERIOR WIDTH		12,570
BED 4	3200mm x 3000mm	GARAGE	5500mm x 6010mm			

House size on brochure is based on Waratah facade. Size may vary dependant on facade. Please refer to working drawings for complete dimensions.



# essential

NEW HOME COLLECTION

For all the latest information on Aston Homes visit our website [www.astonhomes.com.au](http://www.astonhomes.com.au)  
or call us on **1300 06 09 08** with any queries.