

# Manhattan



House size: **22.3**sq

Block size range: **12.5m** land width / **28m** land depth

## SPECIFICATIONS

Home Width	11.30m	
Home Length	20.20m	
	<b>SQ.M</b>	<b>SQUARES</b>
Ground Floor	158.73m <sup>2</sup>	17.09sq
Garage	36.04m <sup>2</sup>	3.88sq
Porch	2.15m <sup>2</sup>	0.23sq
Alfresco	10.73m <sup>2</sup>	1.16sq
<b>Total</b>	<b>207.65m<sup>2</sup></b>	<b>22.35sq</b>

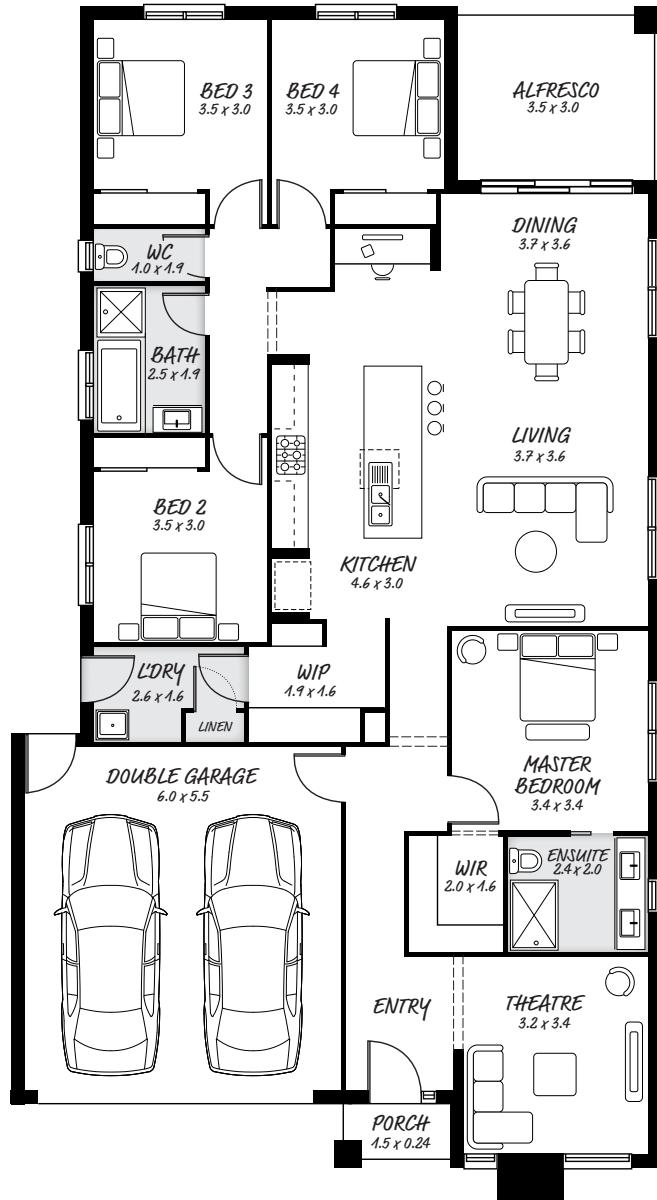
## DESIGN FEATURES

- Theatre room for movie lovers
- Handy access to backyard direct from garage
- Open kitchen with island bench, with plenty of room
- Laundry leads to outside for convenience

## FACADE OPTIONS

All our designed facades can be adapted to this floor plan, however the below facade options are suggested by our design team.

- Botanic
- Luxembourg
- Griffith
- Phoenix
- Hedgeley
- Yarra



### HEAD OFFICE

5/82 Gateway Blvd, Epping 3076

Ph. 1300 060 908

email: info@astonhomes.com.au

astonhomes.com.au

Sizes may vary dependant on chosen facade. Refer to final working technical drawings for final dimensions. Facade options are only a recommendation. Ask your sales representative for what floor plan best suites certain facades.