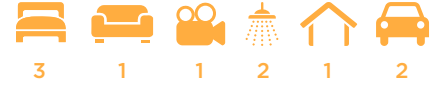


Denver III



House size: **21.6**sq

Block size range: **12.5m** land width / **28m** land depth

SPECIFICATIONS

Home Width	11.30m	
Home Length	19.45m	
	SQ.M	SQUARES
Ground Floor	150.29m ²	16.17sq
Garage	35.99m ²	3.87sq
Porch	3.60m ²	0.38sq
Alfresco	11.06m ²	1.19sq
Total	200.94m²	21.62sq

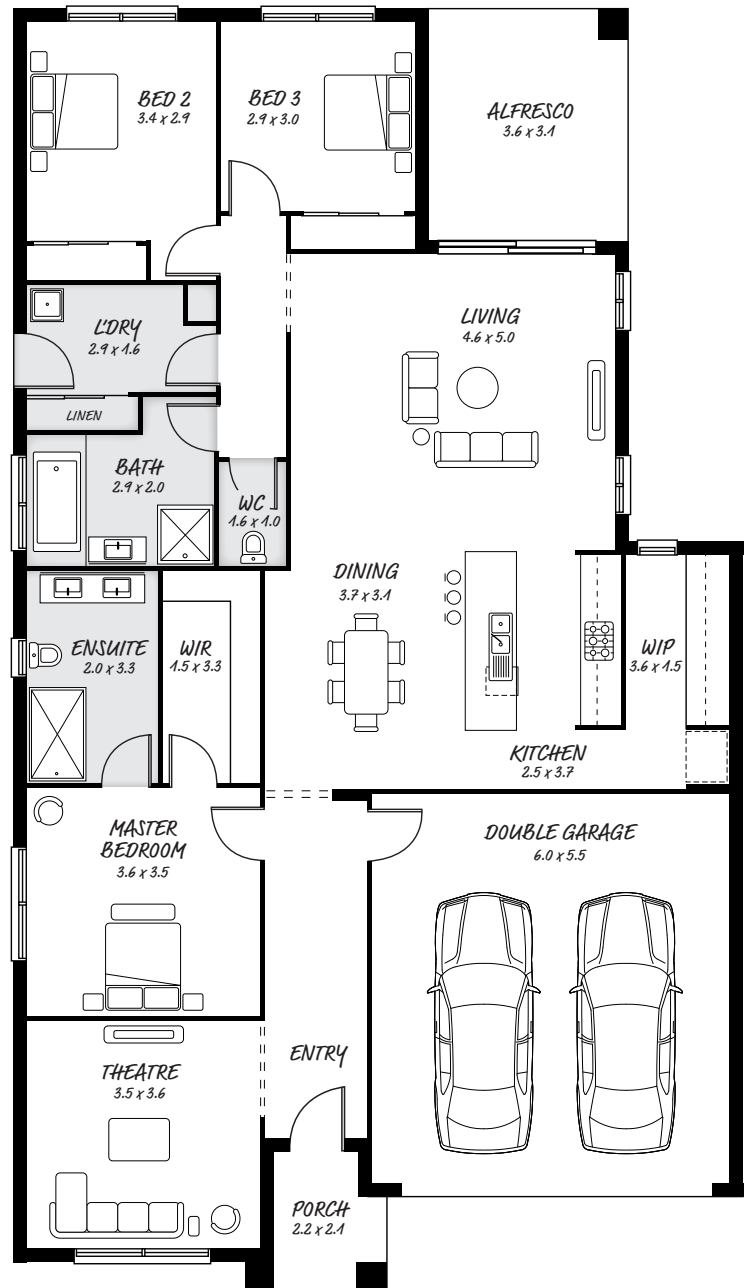
DESIGN FEATURES

- Theatre room for movie lovers
- Handy access direct from garage to inside
- Open kitchen with island bench, with plenty of room
- Laundry leads to outside for convenience

FACADE OPTIONS

All our designed facades can be adapted to this floor plan, however the below facades options are suggested by our design team.

- Botanic
- Luxembourg
- Griffith
- Phoenix
- Hedgeley
- Yarra



HEAD OFFICE

5/82 Gateway Blvd, Epping 3076

Ph. 1300 060 908

email: info@astonhomes.com.au

astonhomes.com.au

Sizes may vary dependant on chosen facade. Refer to final working technical drawings for final dimensions. Facade options are only a recommendation. Ask your sales representative for what floor plan best suites certain facades.