

Hampton IV



House size: **32**sq

Block size range: **16m** land width / **32m** land depth

SPECIFICATIONS

Home Width	13.30m	
Home Length	21.20m	
	SQ.M	SQUARES
Ground Floor	223.33m ²	24.03sq
Garage	36.55m ²	3.93sq
Porch	7.34m ²	0.79sq
Alfresco	30.10m ²	3.24sq
Total	297.32m²	32.00sq

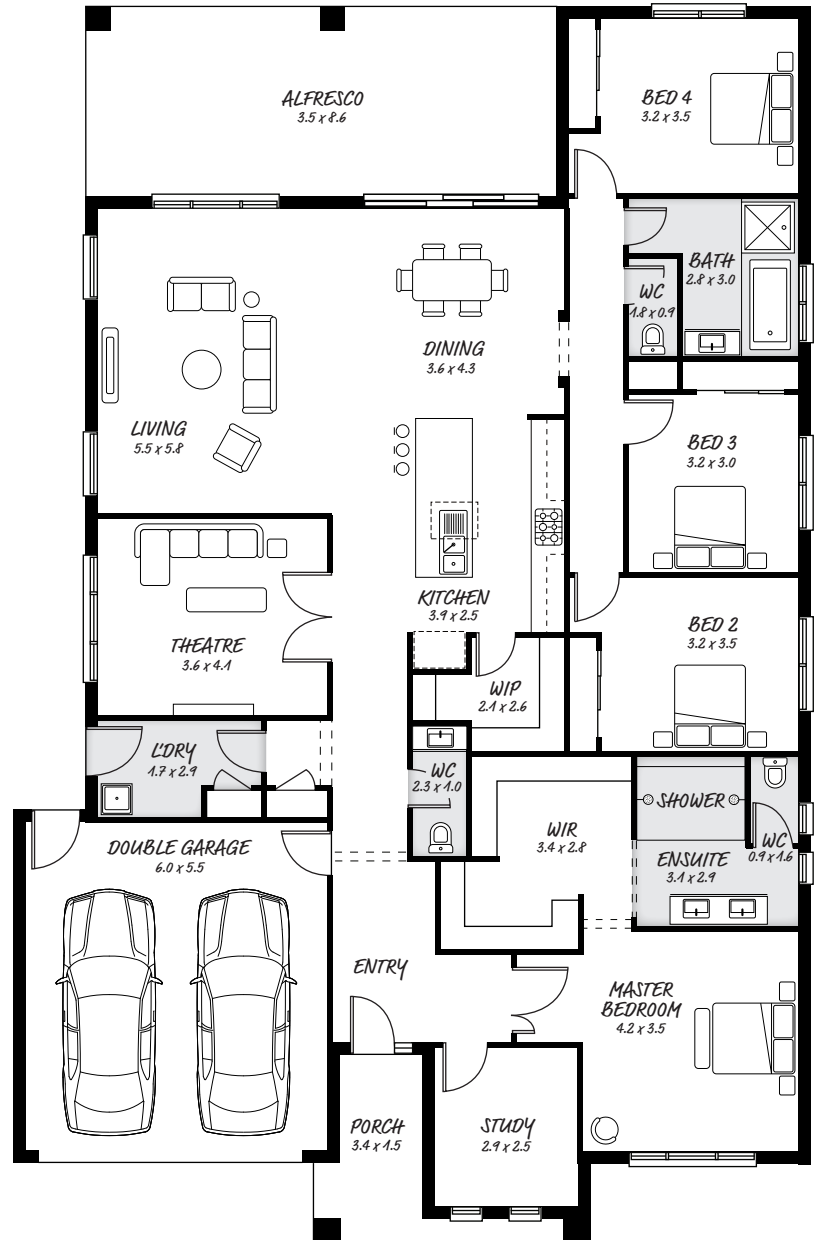
DESIGN FEATURES

- Large alfresco to wow guests
- Home office or study located away for privacy
- Open kitchen with island bench, with plenty of room
- Sliding doors opening from living area to outside

FACADE OPTIONS

All our designed facades can be adapted to this floor plan, however the below facades options are suggested by our design team.

- Botanic - Monsanto II
- Luxembourg - Phoenix
- Monsanto - Yarra



HEAD OFFICE

5/82 Gateway Blvd, Epping 3076

Ph. 1300 060 908

email: info@astonhomes.com.au

astonhomes.com.au

Sizes may vary dependant on chosen facade. Refer to final working technical drawings for final dimensions. Facade options are only a recommendation. Ask your sales representative for what floor plan best suites certain facades.