

Ashcombe II



House size: **19**sq

Block size range: **10.5m** land width / **28m** land depth

SPECIFICATIONS

Home Width 10.50m

Home Length 19.50m

	SQ.M	SQUARES
Ground Floor	135.70m ²	14.61sq
Garage	36.04m ²	3.88sq
Porch	4.33m ²	0.47sq
Total	176.07m²	18.95sq

DESIGN FEATURES

Master Ensuite features walk-in robe

Handy access direct from garage to inside

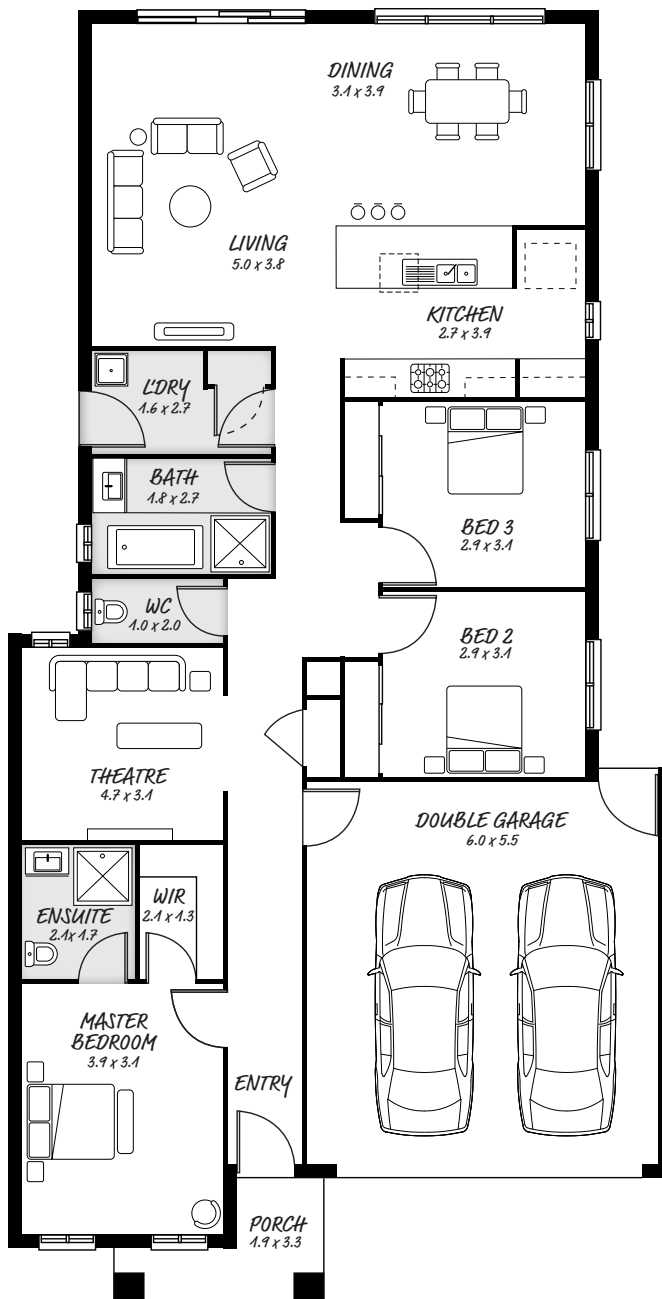
Compact and clever design

Home theatre which can double as a rumpus

FACADE OPTIONS

All our designed facades can be adapted to this floor plan, however the below facades options are suggested by our design team.

- Griffith - Monsanto
- Hyde - Phoenix
- Luxembourg - Yarra



HEAD OFFICE

5/82 Gateway Blvd, Epping 3076

Ph. 1300 060 908

email: info@astonhomes.com.au

astonhomes.com.au

Sizes may vary dependant on chosen facade. Refer to final working technical drawings for final dimensions. Facade options are only a recommendation. Ask your sales representative for what floor plan best suites certain facades.