

Newport III



House size: **24**^{sq}

Block size range: **12.5m** land width / **30m** land depth

SPECIFICATIONS

| | |
|-------------|--------|
| Home Width | 11.50m |
| Home Length | 21.60m |

| | SQ.M | SQUARES |
|--------------|----------------------|---------|
| Ground Floor | 173.57m ² | 18.68sq |
| Garage | 36.20m ² | 3.90sq |
| Porch | 2.69m ² | 0.29sq |
| Alfresco | 9.74m ² | 1.05sq |
| Total | 230.98m ² | 23.92sq |

DESIGN FEATURES

- Handy access direct from garage to inside
- Home theatre which can double as rumpus
- Laundry adjacent to main bathroom
- Open living space with island bench, with plenty of room

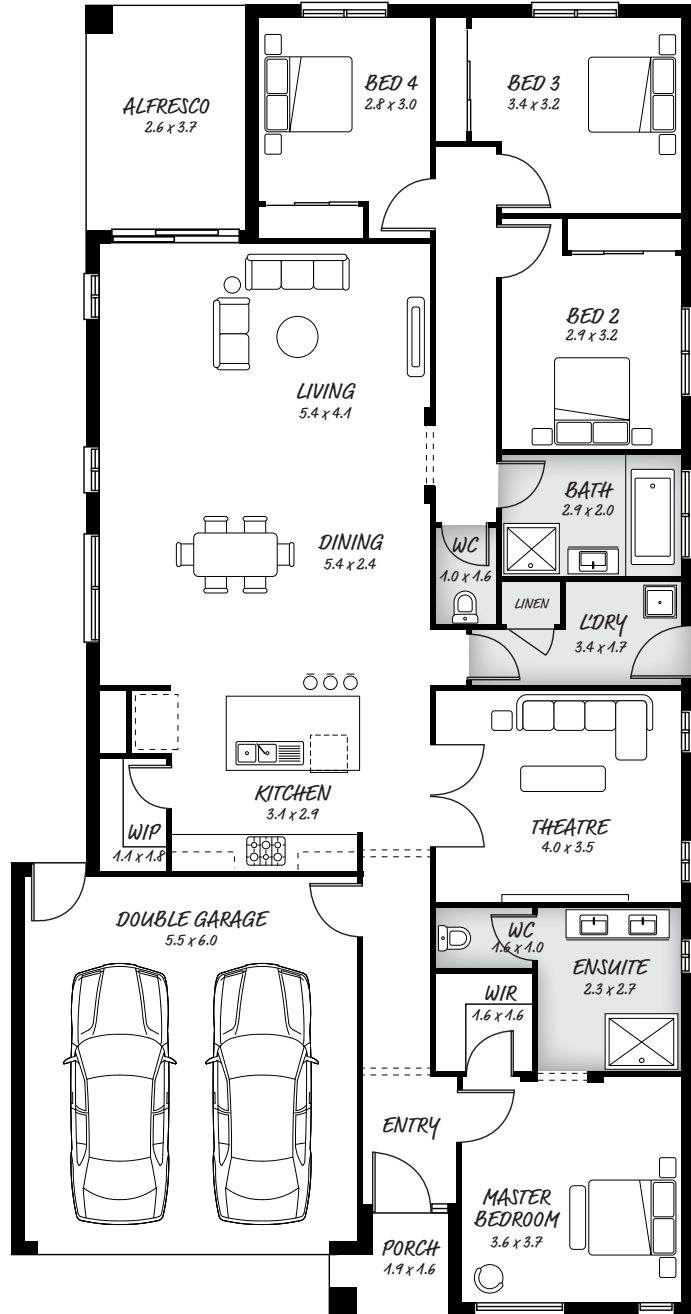
FACADE OPTIONS

All our designed facades can be adapted to this floor plan, however the below facades options are suggested by our design team.

- Botanic
- Hyde
- Griffith
- Luxembourg
- Hedgeley
- Yarra

ON DISPLAY

Aurora Estate - Wollert



HEAD OFFICE

5/82 Gateway Blvd, Epping 3076

Ph. 1300 060 908

email: info@astonhomes.com.au

astonhomes.com.au

Sizes may vary dependant on chosen facade. Refer to final working technical drawings for final dimensions. Facade options are only a recommendation. Ask your sales representative for what floor plan best suites certain facades.