

Austinville



House size: **25**sq

Block size range: **14m** land width / **28m** land depth

SPECIFICATIONS

Home Width 13.00m

Home Length 20.30m

| | SQ.M | SQUARES |
|--------------|----------------------|---------|
| Ground Floor | 179.64m ² | 19.34sq |
| Garage | 36.35m ² | 3.91sq |
| Porch | 6.24m ² | 0.67sq |
| Alfresco | 11.74m ² | 1.26sq |
| Total | 233.97m ² | 25.19sq |

DESIGN FEATURES

Theatre room for movie lovers

Master bedroom in front for privacy

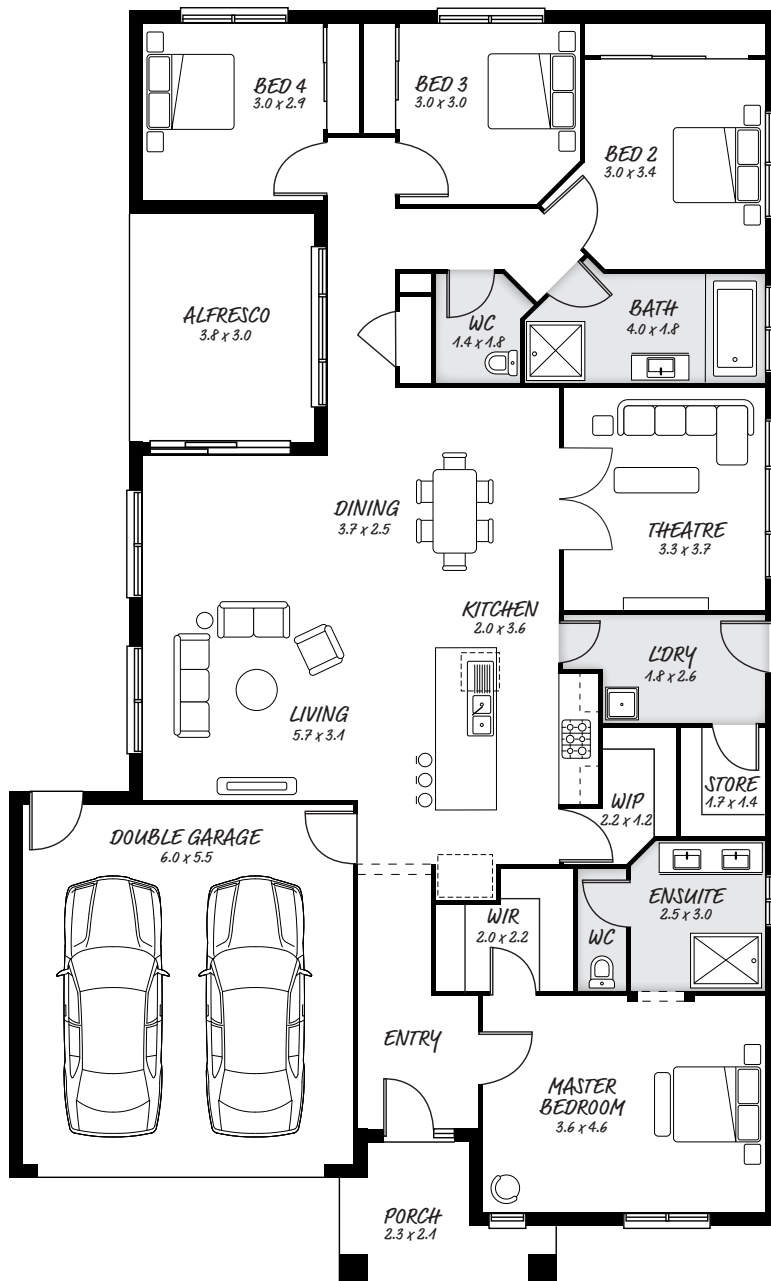
Open kitchen with island bench, with plenty of room

Celebrate the outdoors in your alfresco

FACADE OPTIONS

All our designed facades can be adapted to this floor plan, however the below facades options are suggested by our design team.

- Botanic
- Griffith
- Hedgeley
- Hyde
- Luxembourg
- Phoenix



HEAD OFFICE

5/82 Gateway Blvd, Epping 3076

Ph. 1300 060 908

email: info@astonhomes.com.au

astonhomes.com.au

Sizes may vary dependant on chosen facade. Refer to final working technical drawings for final dimensions. Facade options are only a recommendation. Ask your sales representative for what floor plan best suites certain facades.