

Bronte



House size: **20**sq

Block size range: **11.5m** land width / **28m** land depth

SPECIFICATIONS

Home Width	10.50m	
Home Length	20.00m	
	SQ.M	SQUARES
Ground Floor	149.55m ²	16.10sq
Garage	36.04m ²	3.88sq
Porch	4.43m ²	0.48sq
Total	190.02m²	20.45sq

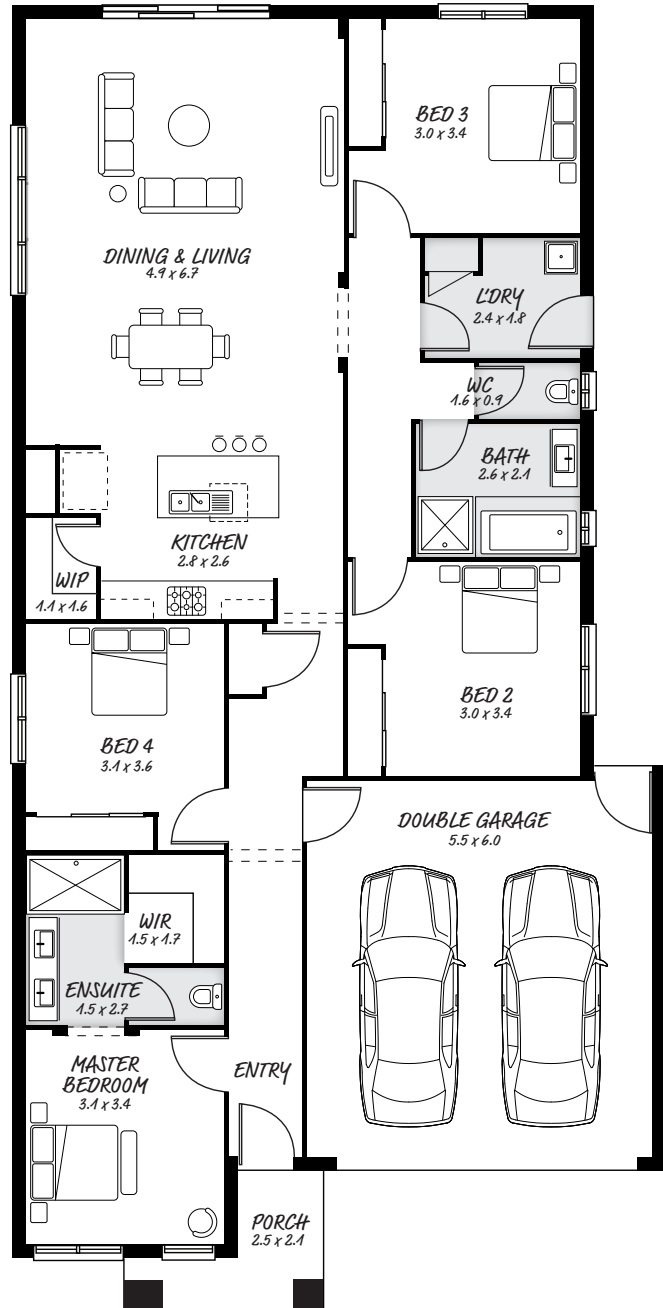
DESIGN FEATURES

- Generous walk in robe and double vanity
- Spacious open dining, living and kitchen
- Access to inside from garage
- Separate powder room adjacent to main bathroom
- Wardrobes to all rooms

FACADE OPTIONS

All our designed facades can be adapted to this floor plan, however the below facades options are suggested by our design team.

- Botanic
- Griffith
- Hyde
- Hedgeley
- Monsanto
- Phoenix



HEAD OFFICE

5/82 Gateway Blvd, Epping 3076

Ph. 1300 060 908

email: info@astonhomes.com.au

astonhomes.com.au

Sizes may vary dependant on chosen facade. Refer to final working technical drawings for final dimensions. Facade options are only a recommendation. Ask your sales representative for what floor plan best suites certain facades.