

# New York II



House size: **28sq**

Block size range: **14m** land width / **31.5m** land depth

## SPECIFICATIONS

Home Width	13.00m	
Home Length	22.40m	
	<b>SQ.M</b>	<b>SQUARES</b>
Ground Floor	203.53m <sup>2</sup>	21.91sq
Garage	36.11m <sup>2</sup>	3.89sq
Porch	4.63m <sup>2</sup>	0.50sq
Alfresco	16.90m <sup>2</sup>	1.82sq
<b>Total</b>	<b>261.17m<sup>2</sup></b>	<b>28.11sq</b>

## DESIGN FEATURES

Impressive his and hers shower with seat

Kids have their own retreat

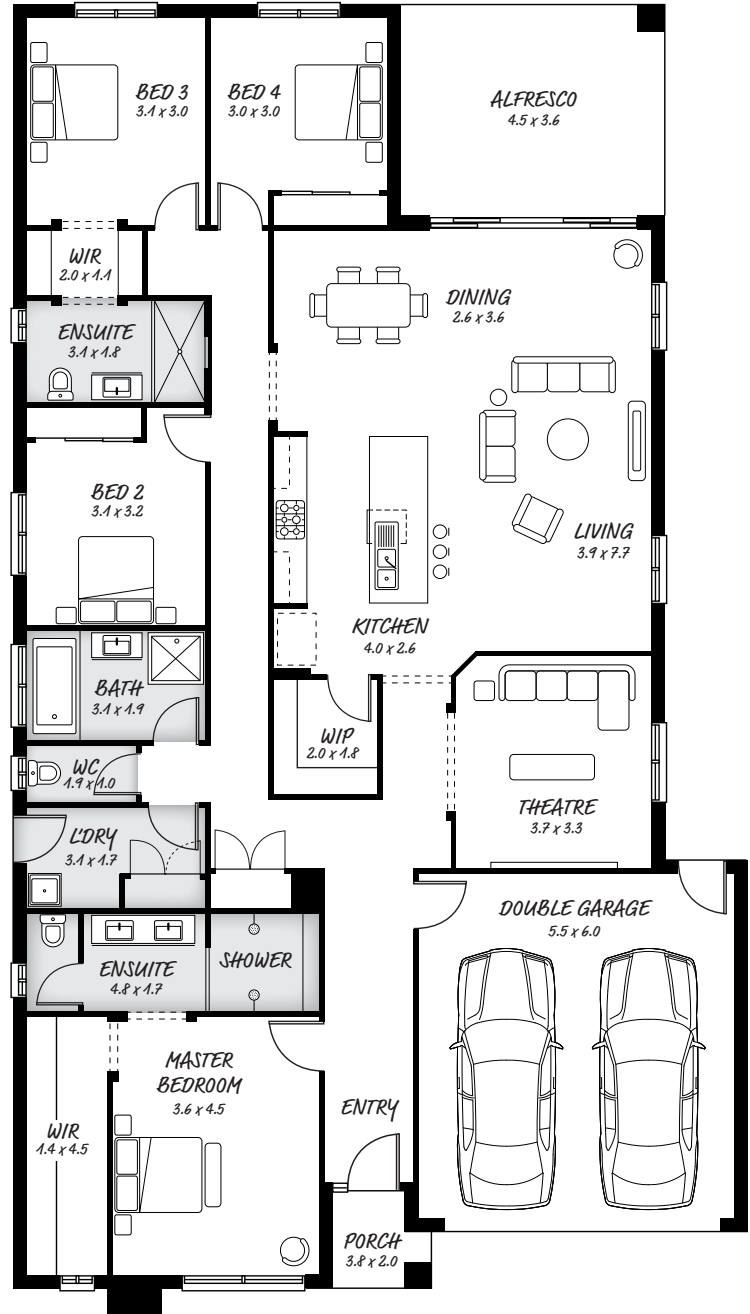
Superb master bedroom with walk in robe

Wide open kitchen area

## FACADE OPTIONS

All our designed facades can be adapted to this floor plan, however the below facades options are suggested by our design team.

- Botanic
- Hedgeley
- Hyde
- Monsanto
- Monsanto II
- Phoenix



### HEAD OFFICE

5/82 Gateway Blvd, Epping 3076

Ph. 1300 060 908

email: info@astonhomes.com.au

astonhomes.com.au

Sizes may vary dependant on chosen facade. Refer to final working technical drawings for final dimensions. Facade options are only a recommendation. Ask your sales representative for what floor plan best suites certain facades.